



KANGELA APA



KANGELA APA! \_

**O BABER, BARER & CO.,***E QONCE.*

BATENGISA ZONKE INTLOBO

**ZEMPAHLA NENGUBO**

NGAMANANI ATOTYIWEYO KAKULU.

I Lokwe Zamatombazana Nabafazi—I Tyali—I  
bhatyi—I Minqwazi.

I PRINTI—I SATIN I—N EMICAKO.

*Esamadoda, Namakwenkwe Izinxibo— Bhatyi— Bulukwe  
—I Minqwazi—I Ilempe—I ZB lilandu.*

YONKE INTO NGAMANANI ATOTYIWEYO.

**KWA BAKER, BAKER & CO.**

E QONCE.

E CALA

KOKU ELITYE LOKUSILA,

-NO-

**MASHIN BOKUBHULA.**

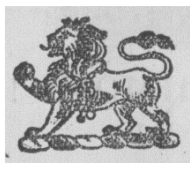
ABANINI BALO NGO

**HAMBIDGE NO MORRIS.**BACELA ukwazisa abalimi bengqolowa nombona okokuba bane Litye  
elifezekileyo lokusila nokubhula—elino Mashini bababini okubhula.  
Abacinezela i steel nabantlaka amatye nabalungisa i silika ne ivayari  
abalungica ingqolowa bayikete. Kwenziwa umsebenzi wonke.

Wonke Umsebenzi Ufangelwa Ubuhle.



LEMINYAKA I 18



IGQITILEYO,

SINGENISE KWELI LIZ WE

**IBLANKETE ZOBOYA***EZILUKWE NGOBUGCISA OBU**BODWA, Igama lazo yi EXTRA**NAVY or MAITROSS*Kungeniswe ngabanye intlobontlobo ezifana  
noluhlobo; esiqgibe ke kwelokuba SIZIPA-  
ULE i BLANKETE ZONKE ngopawu esi-  
luqinisele na Komkulu ngohlobo lwemifa  
nekiso le yongamele lenteto.Ukuba ufuna IBLANKETE YEYENE-  
NE, kangelisa kunene ukuba ina-  
wona umfanekiso we NGONYAMA  
kwelinye LAMASONDO ayo.ZONKE EZI BLANKETE ZIZEZINGATANDATYU  
ZWAYO.ZONKE EZI BLANKETE ZILUNGILE ZITE GUNGQU  
IBLANKETE NGANYE IYAYIVELA IMBOLA,Kwivenkila enitenga kuzo-ke bizani  
Iblankete ezinomfanekiso we Nkonyama.Ziya kubaku kuzo zonke ivenkile za Posheya  
kwe Nciba nase zidolopini zonke.

ZIPAKULWA KONA KUKO

**PEACOCK BROS, and WEIR,**  
E QONCE.

Ngabo bodwa abanokubhala lomfanekiso we Nkonyama

Lirolelwa 3/6 nge Kwata (itunyvelwe ingekapeli inyanga) 4s ipele i Kwata ingarolwa-

4s ipele i Kwata ingarolelwanga. Unokuhlaulelwa wonke Unya-  
ka ekuveleni kwawo nge  
13s 6d  
Izaziso Zabazelweyo, Abatshatleyo, NemibikoIrolelwa 2s 6d, zingena Kanye 3s 9d  
kabini; 5s katatu.**IXARISO 3d I  
IZAZISO ZAKOMKULU.****ZISHICILELWA NGE GUNYA.****Ifandesi Lemihlaba,**

ISAZISO SAKOMKULU.—No 17, 1895.

*Kwi Ofisi yo Nocanda e Kapa, 12  
March, 1895.*NGOKWE Siquendu II so Mto No 15  
we 1887, kuzayiswa apa kuntu  
wonke ukuba ezi ziziba zomhlaba wa Kom-  
kulu, okumandla waso Griqualand East,  
ziya kentgiswa nge fandesi pambi kwe  
ofisi ka Mantyi e MATATIELE ngeqxpsha  
leshumi kussu, ngowes BINI, 28 MAY,  
ngokwezimieelo zalo Mto ungentla, nange  
zimisele zeli fandesi ezibalulweyo, nezingati  
ecikowe ngalothla wo fandesi.Iziba ngsinive somhlaba siya kentgisi  
swa ngenamli esikhonkwe ngeyo, waye ote  
wabhidha ngapezu kwabanye, kama i do  
ngemali engengapantzi koxhonywo ng-  
yo, cyakuba ngowntengileyo ; nntengi ke lewo  
koba kokwake nkuyihlanla jonke ngaxanye  
nokuba yinxalenye yayo ngalothla we  
Fandesi. Ekoti(i) Kongeko ntlawo ngalomhla wefandesi  
isahlulo seshumi sirowe ngenyanga  
ezintandatu, ize esinye isihlali n soshumi  
we kwinyanga rilyisintini linaibhuni  
ezilahla Emlisa wefandesi.(ii) Ukuba imali ehlalwe ngomhla we  
fandesi ngapantsi kwesaliso seshumi  
kaisalela sesahlulo seshumi sihlalwa  
ekupeleni kwenyanga ezintandatu, ize  
isahlulo seshumi esisasaleleyo sirowe  
kwinyanga ezilishumi inammissi usuka  
sela katshala we fandesi.(iii) Ukuba imali ehlalwe ngomhla we  
fandesi ipakati kwesahlulo seshumi  
nesahlulo sesihlanu e hlalwe kwinnani  
nga ezilishumi linaibhuni emva kwefa-  
ndesi elo.Inzala yezontlalo vobka zipantsi zone eku-  
lwini ngonyaka, ekoti ukhahlulwa kwayo  
nenzala leyo kuqinisekwe ngabemali abafe-  
zekileyo ababioi ngokwanciseka ko Mantyi  
—abameli abofika bazibophelele kunye  
nangabanye ukuba ngabo abanetyala, be.  
ngena kuzilandula nangantoni.Indleko zopando njalo njalo, netayitile  
zohlalwa ku Mantyi nokuba ngom-  
nye umntu owonikwa igunya luko ngaloth-  
hla wefandesi.Unotenga lowo wofika abhale umnqopiso  
ngezehlulo ezine nezihlala eyuma ukuba  
wohlaula inzala—ezipantsi ezine ngeku-  
lula, angati ukuba wayerole ngomhla wefandesi  
ngapezulu kweahlulo sesihlanu, aselewe-  
nzela umnqopiso isisalela semali yentlalo  
leyo. Unotenga woba nelungelo lokuhlala  
lomni yonke mhlambini isahlulo semali yalo-  
mnqopiso, kungengapantsi si kwamashumi  
omahlano eponi.Umfanekiso walemihlaba, kwaknywe ne-  
zimisele zefaodisi, aingabonwa kwi ofisi yo  
Nocanda e Kapa, nakwi ofisi ye Mantyi e  
Matatiele.

J. TEMPLER HORNE,

Unocanda Omkulu.

Griqualand East.

*Isiqingata sase Matatiele.*Lot No. 718, umhlaba okwi Siquingata  
pance Matatiele, ubukulu 748 imokolo, 597  
square roods, Uxhonywe t gs £375 ;  
indleko zecando nezinye £21 11/; itaitile 12/3.Lot No 7,719, ubukulu 959 imokolo, 271  
square toods Uxhonywe nge £500 ; indleko  
zocando £22 5/; itaitile 12/3.Lot No. 7,720, ubukulu 1,060 imokolo, 8  
square roods. Uxhonywe nge £500 ; ind e ko  
zorando nezinye £30 2/6; itaitile 12/3.Lot No. 7,721, ubukulu 474 imokolo, 88  
square roods. Uxhonywe nge £250 ; indleko  
zocando nezinye £19 14/; itaitile 12/3.Lot No. 7,722, ubukulu 825 imokolo, 49  
square roods. Uxhonywe nge £412 10/;  
indleko zocando nezinye £20 6,9; itaitile  
12/3.Lot No 7,723, ubukulu 407 imokolo, 72  
square roods. Uxhonywe nge £150 ; indleko  
zocando nezinye £17 7/4; itaitile 12/3.Lot No. 7,724, ubukulu 1,144 imokolo 267  
qanarC roods. Uxhonywe nge £570; indleko  
zocando pezinye £23 4d ; itaitile 12/3.Lot No. 7,725, ubukulu 1,505 imokolo, 428  
square roods. Uxhonywe nge £600 ; indleko  
zocando nezinye £31 7,9 ; itaitile 12/3.Lot No. 7,726, ubukulu 875 imokolo, 26  
square roods. Uxhony we nge £330; indleko  
zocando nezinye; £21 18/6; itaitile 12/3.Lot No. 7,727, ubukulu 678 imokolo, 478  
square roodJ. Uxhonywe nge £340 ; indleko  
Zocando nezinyo £20 11/ ; itaitile 12/3Lot No. 7,62«*, ubukulu 660 imokolo, 521*  
Mmne roods Uxhonywe nge £330 ; indleko  
zocando £20 3/; itaitile 12/3.Lot No. 7,729, ubukulu 791 imokolo, 37  
square roods. Uxhonywe nge £380; indleq  
zocandn £21 13,9 ; itaitile 12/3.Lot No 7,730, ubukulu 910 imokolo, 109  
square roods. Uxhonywe uga £450 ; indleko  
zocando £21 19/; itaitile 12/3.Lot No. 7,731, ubukulu 960 imokolo, 498  
square roods. Uxhony we nge £400 ; indleko  
zocando £27 8/6; itaitile 12/3.Lot No. 7,732, ubukulu 692 imokolo, 351  
square roods Uxhonywe nge £350 ; indleko  
zocando £19 16/; itaitile 12/3.Lot No. 7,733, ubukulu 711 imokolo, 183  
square rood,« Uxhonywe nge £360 ; indleko  
zocando £19 19/; itaitile 12/3.Lot No. 7,734, ubukulu 493 imokolo, 387  
nqani roods Uxhonywe nge £250; indleko  
zocando £18 1/; itaitile 12/3.lot No. 7,735, ubukulu 971 imokolo. 458  
inqmle roods. Uxhonywe nge £180 ; Indle-  
ko zazando £20 9,9 ; Itaitile 12/3.Lot No. 7,736, ubukulu 1,164 imokolo,  
291 square roods. Uxhonywe nge £580;  
indleko zocando 7/, Itaitile 12/3.*Ukuba Felkorneti base Ongelug Nek.*Lot No. 7,737, ubukulu 978 imokolo, 401  
square roods. Uxhonywe nge £189 ; Indie,  
fco zocando £24 17/; Itaitile 12/3.*Kamandla wase Lady Frere.*Lot Nu. 7,862, umhlaba emi kwisigangata  
sase Mount Frere ekutiwa ngu Lot C, ubu-  
x 319 square roods, 17 square feet, U-  
kiwe nge £5 ; Indleko zocando £6 18/8.rNo. 7,863, ekutiwa ngu Lot D, ubu  
kulu 1 imokolo, 165 square roods, 77 equate  
fa 3t. Uxhonywe nge £7 10/; Indleko  
zocando £10 15/6 ; Itaitile 12/3.Lot -No- 7,864 ekutiwa ngu Lot C, ubu  
kulu 1 imokolo, 164 square roods, 92 square  
rood. Uxhonywe nge £7 10/; Indleko  
zocando £0234157 ; Itaitile 12/3.Lot No. 7,86a, ek utjwft ngu Lot F, ubu-  
kulu 240 square roods. Uxhonywe nge £5 ;  
Indleko zocando £.5 7/; Ita/bi'e Ig/3.

INTSHUMAYELO

mvana, e Mbo, ema Mpondweni, e Mzimvubu,  
nose Walfisch Bay, ngendlela yokutegisa Utywala  
kulo Mazwe, ongu Mto oyakuma umi kuanjwe  
ngawo endaweni yo Mto ochaiveyo kwi  
Ntshumayelo lo. 154 wo 1885, No. 165 wo 1885,  
No. 210 wo 1885, No. 53 wo 1889, No. 40 wo  
1902, No. 191 1893, nakwi Ntshumayelo ye  
Kuluneli kulo lonke elase Mumpodweni yomhla  
wa 21 May, 1894 ekuti zonke ezo Ntshumayelo  
zaguqniwa apa, ngapandle kokuba zibe zipatelele  
kwiziposo ezanzweyo ngakuyo, ngalimbi nokuba  
yinqubo eqalweyo okanye ehlalele ukukhidiwa  
puntsi kweze Ntshumayelo zigququlelweyo  
ngalinye kula aselekankuniwe, namalunga  
nemvume ezikoyo zokutengisa i Wayin, i Beer,  
Nezisele Ezimliliso, eziyakuti logama opakati  
kokuhlokonisiwa kwale Ntshumayelo no. kpepla  
kwexesha lwezomvume, ziqukunwe ngendlela  
ezenza yona entengiswevi eyaveliswa zizo  
nendleko zabaniyo abangati babe kuzo  
njengokungati ezi Ntshumayelo zigququlelweyo  
ziseamandlu.2. Invume (Licences) zokurweba ngu Tywala  
kulamazwe ziya kukutshwa yi nkulu ye Mantyi  
okwexesha kwilizwe ngaboye, okanye ngu  
Mantyi malunga nelase Mzimvulu yile Walfisch  
Bay, nokuba ngomye umrulumente ongati  
alatlwe lookonzo vi Raluneli ngokuti  
amhlokomiso kwi Gazette. Zonke invume  
zolohlobo ziya kupelelwa limesha ngo 31 December  
ngonyaka ezakutshwa ngawo, kodwa  
kuyakuvumeleka ukuba ukukupha ezesiqingata  
sonyaka emva ko 30 June yonke iminyaka  
3. Ngemvume yoyayaka ergati ikutshwe  
naninina ngapambi ko 1 July ngujaka, kuyu  
kuhlalwa i £10. Ngemvume yenya, nga ezi 6  
ekutshwa nangalipina ilixa emva ko 30 June  
ngonyaka, kehlalwa £5.4. Ezinvume ziyakuba nsmngunya okuramela  
intengiso tywala ngokuti bungakula namna,  
kwindawo eyoxelwa epeeni elo lemvmne, pakati  
kwentsimbi ye 8 kusasa no 6 wangokuhlwa,  
yonke imihla ngapand e kosuku lwe Cava, Good Friday  
ne Kresmes ; kodwa ke indawo ezivunyelweyo  
ezikwa Mantyi, wonke umntu onikwe igunya pantsi  
kwe siqendu 2 ukuba anike invume angazi-  
dwalubula eziyure zibalweyo akuti xhaxhe ngo 11  
obusuku pantsi kwemigqaliselo engati ibe  
yevakalayo ngamatuba abalulekileyo.5. Utywala abukutengiselwa, kupiwe ngabo,  
banikwe nangabamini onemvume yokulungo  
kumntu ngapandle kokuba arole ipepa elibhalwe  
ngumantyi lokuba afumane ebo, tywala abufunayo.6. Akuko tywala boyakutengelwa, kupiwe  
ngabo, bunikwe nokuba nguwupina umrwebi  
onepepa nelemvi me kumntu onepepa lokutenga  
utywala ngapandle kokuba linikelwe kanye ngenye  
oyakulimela ekupeleni konyanguatatu bonke  
kumantyi weso siqingata akuso, barwebi ogqite  
lemigaqo nokuba yeyesiqendu esingapambi kwesi  
za afunyenwe entyala uyakudlwa imali enge-  
ngapezulu kwa £20 engenawo afakwe  
entolngweni esebenza mhlambini engasebenzi  
nzima ixa elingapezu kwinyanga ezintatu.7. Akuko nto ekwi Siquendu 4 sale Ntsbu mayelo  
eyekunqanda umrwebi onemvume kutengela  
okanye ukumka utywala nanga- ngalipina ixesha  
ngobungatu ukuba kinselwa kwalo, ngabahlala  
kulomzi nakwabase Inbambeni.8. Akuko tywala buyakusiswa kulamazwe  
axeliweyo ngapandle kwenivume ebhalweyo,  
efunyenwe kwi Nkulu ye Mantyi okanye ku  
Mantyi we Siquingata eyakubuye ibuyiselwe  
ekwakuye, lomvume ibhalweyo iyakuxela ubunzini  
noblot o lotywala omalungiswe.9. Ukuba kuko ogqite esi siqendu sandulela esi  
angense kulamagwe utywala ngapandle  
kwemvume ebhalweyo, obotywala angabi hlutwa  
nganapolisa nokuba ngabamini amangunya  
ngemfanelo ngu Mantyi wesi Qingata, za  
afunyenwe entyala yi Mantyi adliwe imali  
engetigapezu kwann £50, engenawo okanye  
ukongezelela kweso sohlwayo afakwe  
entolngweni esebenza mhlambini engasebenzi  
nzima ixa elingapezu konyaka, utywala obo  
bube ilifa le Nkosazana.10. Wonke umntu ongati ngokuchaseneyo nale  
mig qo, atengise, arwebe, adyaraze ngapandle  
kwepepa lemivume, umhlambini nongati enalo ipepa  
elo, atengise, okanye amike, okanye adweliselic  
ukutengisa, nga, limbi arwebe nangandywala zimbi  
ndaweni zimbi kunaleya wayevunyelwe kuyo  
ukuba abutengele kuyo utywala, mhlambini naxa  
ate watengisa sefepilele ixesha mhlambini  
ngokwepula umnqopiso wepepa lemivume yake  
obekwe kwi Siquendu 4, xa xa afunyenwe entyala ngu  
Mantyi we Siquingata one kuso kuso lomntu uya  
kudlwa imali engengapezu kwama £50 engenawo  
afakwe entolngweni esebenza mhlambini  
engasebenzi nzima ixesha elingegapezu  
kwenyanga ezintandatu.11. Wonke onepepa lemivume yokutengisa  
utywala noneye venkile ongagqali imigaqo yala  
Ntshumayelo uyakuba lilifa, ngokubona  
nokuqonda komantyi, pezu kwrzi zohlwayo  
zaneqinweyo, lokupangwa lomvume yokute ngela  
utywala nokuba yevevenkile nokuba zizo zombini,  
njengokutsho komntu, kwangokoko mhlambini  
ngokufanele kubuye anikwe invume yokurweba  
ngotywala mhlambini ngevenkile mhlambini  
ngezonto zombini, njengokuma kwetyala,  
kwisituba esingengapezu kweminyaka emihlanu.12. " Ngotywala" kuquka i Wayin, Bec'  
(biya) nendywala, nazo zonke zisizelo ezinxilisaayo,  
kwi " biya " kuquka ukuma Nobum Xhosa.

TIXO SIKELLELA UKUMKANIKAZI

Inikelwe esandleni sam ne Sineamatiselo Ea  
Komkulu se Koloni yase Cape of Good Hope  
ngoutisuku lwa 25 September 1894.W. G. CAMERON, Injengele,  
Ishawe E.ipele Ulaulo.Ngomvalelo wo Mhlekozi, Itshawe Elipete  
Ulaulo e Bhungeni.

J. GORDON SPRIGG, No. 343, 1891.

DR. T. H SMITH,

*(Ugqira, Wamehlo).*

UYACEBISA NGENCWADI.

*Address.*

Bex 336, Johannesburg.

**PULAPULA!**

IVENKILE END AL A YAKWA

NYUWENI

ITATWE NGU

NKISINI.

Obekuyo kakade. Niyazi ukulunga  
kwempahla vayo. KE ngoku lempahla torwwe  
YONKE.

IMPAHLA ENTSHA

Seloko ite qo ukufika.

YIZANI KUYIKANGELA KWA

UBOYA Busafunwa kwmnjongoko.

Ningatengisi ngingekaliki

kona

C. E. NIXON,

Otat Indawo ka J. Newing, Esazulwini

Somzi,

S3 QONCE.

KING WILLIAMS TOWN CAPE COLONY TUESDAY MARCH 26 1895

**DYER & DYER, Limited**

E-QONCE,

ABAZEKA kunene ngokumika ezona zinto zexabiso elino-  
kubako kubaxasi babo ngemali yabo, bayanicela ukuba  
nike nize kubona impabla yabo pambi kokuba nitenge kwezi-  
nye indawo naniya kufumana okokuba zezona zexabiso elilu-  
ngileyo kwelilizwe.

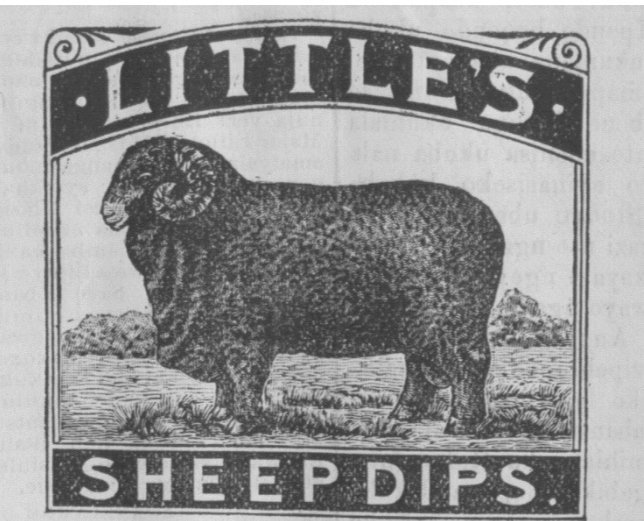
IZINXIBO! IBLANKETE!

ITYALI! IMINQWAZI!

IHEMPE! IZHILANGU !

EZAMADODA ISUTI ... Ziqala kwi 11/6 ku 50,-  
Do. IHEMPE ..... do. 9dKu4-  
IMINQWAZI YAMADODA ..... do. 16 kwe 6 -  
EZAMADODA IBHULUKWE ZE KODI ... do. 4 6 kuso 10/-  
Do. do. TWIDI ... do. 3 9 kuse 20/-  
Do. IZIHLANGU (BLUCHERS) do. 4 9**Ezokutshata Isuti**Ibhatyi ze Twidi emnyama no Saluvayi ngamanani onke  
Ibhulukwe ezipolileyo ze Twidi, njalo-njalo.*Ezabafundisi Impahla Zentlobo Zonke- Eyaba-  
fundisi Iminqwazi Ikola njalo-njalo.***Kwa DYER no DYER, Limited**

KING WILLIAMSTOWN.

**Eka LITTLE IDIPU Yegusha!**

Engamanzi

Ayinatyefu!

Nengungubo Inetyefu!

yeyona iqgibeleleyo  
itembeke ngoku-  
gqite zonke.

TSHIPU IZIGQITA ZONKE

AMAGOSA AYO-

**DYER & DYER, LIMITED.**

Abantu banokucela ezivenkileni abamelene nazo ukuba zibafunela.

**Beauchamp, BoothCo.**

E QONCE

ITYALI EZINTSHA!

ZISAND' UKUFUKA.

**YIZANI NIBONE!**

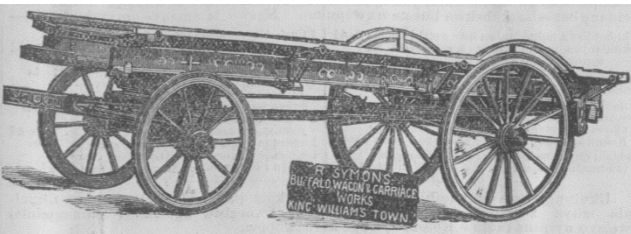
ZIYAKUNIMANGALISA.

Zezentlobo ezigqibeleleyo zofani ngofani

ezingazange zibeko apa e QONCE.

Bonke aba vela ngapandle bebefanelwe  
kukuza kubona EZITYALI ZOBUGQI ngapa-  
mbi kokuba batongo kwezinye Ivenkile.**BEAUCHAMP, BOOTH & CO.**

E-QONCE, KINGWILLIAMSTOWN



No. 11.

R. SYMONS

**KWISHISHINI LASE QONCE LE NQWELO NE KALI,**UCELA iroba emzini obanzi ontsundu nomhlope ukuvakalisa ukuba unento  
emnzi yempahla elungiselelweyo ngenyameko ezi Kali ne Bagi, njalo-  
njalo.Abafuna ukutenga bangaba benze into yengqondo ukuba baqale ngoku-  
mbambela okanye batumela ukubona lempahla ngapambi kokuba babhickise  
kwezinye indawo.

Ihanesi (zabashe elinye nezamabini)





## IZINTO ZINGALO

U SIR J. ROBINSON.—Lommuzina oyi Nkulu yolaula lwase Natal usavela imzi elunge entla kwelo alipetoyo.

OHANJWE NGOKUBULALA.—U Dempers u Nobhala (clerk) e Post Office e Jojinasi ubanjwe ngokubulala nokuhlanga ukufa kuka Carney.

INKOSI ZAMA MPONDO.—Ab**a** bamnzima banduluke e Kapa ukugoduka nyokuhlwa kolwesi Ne lwengapaya Oko hebesa Kapa benzelwe ububele yi Rulumei e Sir H. Loch, ebabonisa ukulamba kwavasingata.

OBULUKWEYO.—U Craxickhank kwelama Bhulu udutalye nge revolver agnabob abesela naye utywalw ngobuny ubusuku, kwatxyanywa ngentwana encinome Wamcotela uvabob ubusuku wandubu**a**. Hayi utywala.

ODLIWE NGO TYWALA.—U Mr. Johnsen umninnotehle yase Breidbach, udliwe yima i ntyi yase Qonce i Ez, okanye imtsuka esi Z, mnotkungenisi n'otywala nge Sabata kuma : doda awayengeheli dinaleni nangokwafa I enye yawo engu Mr. Ouywa.

UKUFA.—U Lieut. Stewart obantuduka kwa Bulawayo ngo October ogqilileyo kanye naOntsundu ukusiga e Zambezi, abuhlele Post Office kubuyana kwake Waqwatyawa yinkwenkwe yomntu ontsondu, etc yezu umpahlia zake mcwadi namapea.

ISIPITHITANA EMA MPONDWENI.—U Mjor Sprigg, imantyi yase Mhizana ema Mpondweni, upurne nomkosana wamaqilamba nnyaka kutshela ngokuba ntyi, asuka ama Mpondo axobha, azilungiselela. Waac hloka ubuya umkosana lowo ngomtoto ka I mantyi. Yiyo lento liphezelayo ngasenta Mpond weni.

WHITTLESEA.—Bebekade besiva ngegqakaqa spa namhla isakaya. Sezimbini ngewehle Zayo, eyindoda yona hayi kunzima, noko eyinomntwana ngokuba agqaleya ngegakaqa. Abo bantu ke busiwe ethole, dlelweni sabo. Sibi esisifo, namahlukwe abase Whittlesea. Umntu sisuke simfanise nesele liquabile.

E MTAFA.—Ukumbesha kwesivomo so inbona ukuba siyakuba sesihle kubangele ukuba abonandakala bafun o ukutengisa msinywa, into ke loyo ebangole ukuba abhi kabawiseni. Ingxowa yokutya ngoku ihamba kwi 14 i kuyafunwa noko kungemanda. Ukuba ingqale ibhili, yautka iya kuKunaklua ukutya.

MIDUNGELA YENCWADI.—Ezi zicwadi zabantsundu ezinkulu Post Office yase Qonce ngo 18 March, 1895, abongazi wayo abanini: 20 —Sir Boyi, Mus Annie Boo, Sirs data Bobi, Sirs Hannah Buwa, Aliss Elizabeth, Mloka Deli we, Diamond Jamaela, John Jhe Mies Emily Folic, Miss Idahs Mbuwana, Hendrik Mifanane, Aliss Nosana Mshwanana, Miss Al Monie, Air C. Noshebe, Mr Nyobo Nyalasho, Sir Jansee Nsamo, Air Nogsiga, Myiki Nxyanga, Aliti Hajisi, Edward Bhukudza, Lamani Pinga, Sir Harder Qwela, Alarizyo Umnto.—J HALLOCK, Postmaster.

ESINYE ISANGA SETYALA E RAUTINI —Ima nty engu Sir, van den Berg isingete ugolwesi Bini olugqilileyo ayala lomabane ethelekileyo nge kakule abantu ngokuba *Charles A.More Deane* okuba imnti ka *1845*. Iingqa leke libe kukumseza i Richard Alexander kunene aze akata eliyakakya amine epakala ngoku imnti engxoweni. Umsewza ute necingwe ukuba assie kwepambili indawo le azoyoyiko kuba ebucopo into butambileyo kodwa into le iminyaka wada wagabudala ngokuba makabe unyome amojise zona ukuze uti hli. Kodwa engenakucwazi, ubesenokupondana ukhulisa va ke. Belisatwe.

UMIKILO WE JAJI.—Ngesiqingata sonyaka esitwedesyo i Jaji zimiselwe ukujikelela zizeta amatyala ngohlobo.—Esuka e Rini yoba se Qonce, Mvulo, 25 March; Monti, Hlanu, 29 March ; Katikati, Ne, 4 April; Komani, Mgbihelo, 6 April; Dorredrecht, Mgbihelo, 13 Apr I, Gala, Bmi, 16 April; Gcwuwa, Mvulo, 22 April; Umnta, Hlanu, 26 April; Kokedad, Hlanu, 3 May. Esuka e Kimberley Yoba se Middellburg. Tatu, 27 March; Cradock, Hlanu, 29 March; Steynsburg, Bini, 2 April; Burchersdorp, Hlanu, 5 April. Alivali North, Ne, 11 April; Baikly Elst Tatu, 17 April.—BT.

UBUHLE KWA MNTANDA —Uti obambele kwesika Aluyanda esikwesi siqingata sisi Qonce : Kuyinto elingileyo ukuxela into esakuba ikakule, ndingileyo. Akako nto uhukela njengento eyenziwe ngu Mr. William Mnyanda kunye nemp*i yake ekwakela Opezu Konke indukazi eknobakala ukuba iyakuba ntlc; baye bezukela ngapandle kokukataza namani ngayo notn, fundisi wabo elileli kongelele umntu*zi* xnatanga nayo. Enye into ndinobisi ukuti umfundisi weso siqingata oodaka ka Tam, ra ndifutsi kokwam ukubona ukuba akosakatunda kona ngenxa yeso sakiwo sifauele ukuba sibe sen zini onomfundisi, kodwa ke ashilazise Tamara lodwa koko siwihlalane no Alkangiso ngupandle kweweke za siteta imanyiso njengoko injalo, endinestamba lokuba iyakuba yindwe kuti lento; ngumzekelo omhle kanjalo. Okunye ixela into engenziweza namhla luhlanga ukuba inkosi Ezamanenkazi Ishuzi Ezitlungwayo Zofele zizqala kwi 4s. Ezamanenkazi Ishuzi Izihlanga Zofele beziamkele ilizwi lika Tixo nobukosi bazo ngebungqindlili namhla ukuba bezle zavayizina imiyalelo ka Yehova uhe ngesokuzihlala ngokupakade, hant, ngokuba unyaka ukuba sigene imiyalelo yake kulala. Gumbi ke, akufani nto yimbi, ke, pambili into ka Mnyanda usenkondweni, ke selunga uuzi ukowabob uugati mhlanu izifake kulo kumpi nemp*i yake, impi yase bhotwe* Enkangiso, Tamara Rodi, Zimbaba, Sitalo, Tyeci, Altonbe, i Buffaloford, ipose izanda, yandule ke ukuti, Huntuu Satana. Kodwa uma ukuba i Nkosi iyavuna nduga ndingavyona lomi ni nokuba andisokennenza into ukuze ihambo lam khwazi ukuti ndaka ndisvbona into eyenziwe sithi luhlanga ngapandle kotomti ombhele, siyenzela um Dalu wetu.*

UMBULISO KU MR. J. D. GULWA.—Ngolwesi Ne, 21 March, umzi wekwa Bhlulanti ube ne “ Ti ” yokubulise u Sir. Gulwa kuba esimka e Mgqawakwe, nokuvakalisa ukunganeliswa yindlela anduluka ngayo. Umzi uheko kammandana. Emna kwento eziva panika kwempunzi, umgcinu shilalo, u Mr. N. Gayua, uvakalise into elungayo, exela nosizi abanalo ngokushiywa ngu Mr. Gulwa obafike apa wangumzekelo wento efanek ubu nyi ithehala—ukuba nesimlo, un-Krestu, nekubha ngu nzili, utyotiyawa kukwazi ukutya u Mr. Goni, umka engenaloo necipaza eeli esitwileni wake. Njengomntu wakwa wko kwintlanganiso zokgotw, wa kwake akazanga usika isizatu.—U Mr. Mnyimbane ute ukuba kuyinene ukuba oko Gulwa ugotwva ngapandle kwesizatu, kuyimfanelo yetu njengomzi ukuba siwulwe omvondo onjalo. Kodwa yona unenokho yokuba kuko qumtu abate batuze abose Mgqawakwe ukuze bafike kwesi cigibho nabu baka bengayiseki lento.—U Mr. Buoy Bovana ute ukumka kwalo mfana kungaba kuusandla so Aldali pakati esimntlela kokwona msebenzi mkuU—U Sir. Stoffie uvakalise usizi lokwahlakana nomhlobo wako omkulu.—U Sir W. D. Soga uvakalise ubunzima obufunda ngamadodana afundeli y- ukungatjenywa kowawo, nokungamkeleli kumzi omhlop*e; ke* uke e ekukonzweni umzi masizame ukuzitoba, siwifunde into ayizi; yanti Nkosi: “Maze nilmuke njengenkoya nginabi nangozi njengehloko.”—U Sir. F. Jona ute usyamba ukuba ezineto Bokumomona oko Gulwa azisayi kumenzakalisa kodwa zoti zimnede.—U Sir Mant sayi ube lusizi kuba kute kwangenwa kwimihlabha enokwenzakalisa abunye aba zalwana; ute nakula u Sir. Gulwa emka e Mgqawakwe ngepanidle kwesiz itu, kodwa i makacae e Nkosiw imbonise into ebangela i ukuba angavincisni nabantu bhe Mgqawakwe, mihlambi yombonisa into nokuba incinane. Ute umntu nlefmefle uknzama ukokolosi nokhe abantu kwindawo akuyo.—U Sir. Zimzama ute umkelwa ngomhlobo wako omkulu abete wafanda uluto ngokugelana naye.—U Mr. Seta uvakalise usizi analo kuba kute kwangenwa kwindawo ezinneto pakati, waye ke yona enyome lwabangoyoko kulo luvo lwale ntlanganiso umlungu neneto ezibhekiswa ku Mr. Gulwa, kodwa ke ngokongatandi nkt nakalisa imbuto onje sayi kungena ekupondilem nenetoto ebekufuneka pendulwe —Esukile u Mr Gulwa ubulele into eyenziwe ngami wakwa Bhlulanti, wayeliziz umanyano kwi ramente ukuze usemberzi uhambe, uvuyiswe kukwazi noku nakuba esahlukana usho ngnyama kodwa boyu kumpulele- kelela ngomoya.—Ekumkimeni isipo se Culo ne Bhaibhite, umgcinu shilalo ute wolwa ogqozayo apo kuba konya, zaye imanyiso iya i ekoyisa ekupeleni. Ivalwe ngeculo imibuto emnandi kunene.

YOYISA BONKE UBUCOQI —“Kangela landosha imxhile.” Yindlela abebethe ngayo abantu kum leyo xa bendibon wa ndihexa esitlatweni. Ongati ukotuka kwako uvumelane nabo. Kodwa bonke baboposisa, ngokulawo. Njengoko ungandayo ukwazi mihlambi, ndiya kekckecela imbangi yokuba ndingahambi ngokute iye emendweni, ukwengqela ndika adibuyele emva kancinane kwindlela yobom bam.

Kudu kuzokuba lixesha endiza kuteta ngalo, ndibe ndipile ndicilaitile njengabantu bonke. Kodwa malunga neminyaka emihlanu nemitantatu egqilileyo ndiqale ulaziva ngati kuko into engalungileyo kum. Andibanga nakukutanda kakuhle ukutya njengokuba bendifudula ndikutanda. Ukutya bendiye ndikufane kodwa isisu sam singalungi ndakutya. Lonto yaba ntsha kum yandimangalisa. Kanti ndiyakuti ndakuzinyanzela ukuba ndiye kube kubi ngaphezulu. Ukutya bekusuka kubenzima esiswini sam kuje Dunge lote endaweni yokuba isisonka nenyama elungileyo, ndive ndidakumbile ndityafile, njengoko kubanjalo xa selidulle ixesha etu lenkululeko kuya kulala. Ndapaula ukuba ubutongo bam buyenje into. Bebubakuba lala kube innandi, ngokunye kuyimfungumlungu engaxeli noko, akukubeni ndike nditite kanye ama- yenza okwezisa nezinye izinto eziyobayo.

Ndabona ulwimi lwam lunoluchwe, ndaba nokutyafa ekusabenzeni kwi bhi- zimisi yam, nomkosana wamaqilamba nnyaka kutshela ngokuba ntyi, asuka ama Mpondo axobha, azilungiselela. Waac hloka ubuya umkosana lowo ngomtoto ka I mantyi. Yiyo lento liphezelayo ngasenta Mpond weni.

WHITTLESEA.—Bebekade besiva ngegqakaqa spa namhla isakaya. Sezimbini ngewehle Zayo, eyindoda yona hayi kunzima, noko eyinomntwana ngokuba agqaleya ngegakaqa. Abo bantu ke busiwe ethole, dlelweni sabo. Sibi esisifo, namahlukwe abase Whittlesea. Umntu sisuke simfanise nesele liquabile.

E MTAFA.—Ukumbesha kwesivomo so inbona ukuba siyakuba sesihle kubangele ukuba abonandakala bafun o ukutengisa msinywa, into ke loyo ebangole ukuba abhi kabawiseni. Ingxowa yokutya ngoku ihamba kwi 14 i kuyafunwa noko kungemanda. Ukuba ingqale ibhili, yautka iya kuKunaklua ukutya.

MIDUNGELA YENCWADI.—Ezi zicwadi zabantsundu ezinkulu Post Office yase Qonce ngo 18 March, 1895, abongazi wayo abanini: 20 —Sir Boyi, Mus Annie Boo, Sirs data Bobi, Sirs Hannah Buwa, Aliss Elizabeth, Mloka Deli we, Diamond Jamaela, John Jhe Mies Emily Folic, Miss Idahs Mbuwana, Hendrik Mifanane, Aliss Nosana Mshwanana, Miss Al Monie, Air C. Noshebe, Mr Nyobo Nyalasho, Sir Jansee Nsamo, Air Nogsiga, Myiki Nxyanga, Aliti Hajisi, Edward Bhukudza, Lamani Pinga, Sir Harder Qwela, Alarizyo Umnto.—J HALLOCK, Postmaster.

ESINYE ISANGA SETYALA E RAUTINI —Ima nty engu Sir, van den Berg isingete ugolwesi Bini olugqilileyo ayala lomabane ethelekileyo nge kakule abantu ngokuba *Charles A.More Deane* okuba imnti ka *1845*. Iingqa leke libe kukumseza i Richard Alexander kunene aze akata eliyakakya amine epakala ngoku imnti engxoweni. Umsewza ute necingwe ukuba assie kwepambili indawo le azoyoyiko kuba ebucopo into butambileyo kodwa into le iminyaka wada wagabudala ngokuba makabe unyome amojise zona ukuze uti hli. Kodwa engenakucwazi, ubesenokupondana ukhulisa va ke. Belisatwe.

UMIKILO WE JAJI.—Ngesiqingata sonyaka esitwedesyo i Jaji zimiselwe ukujikelela zizeta amatyala ngohlobo.—Esuka e Rini yoba se Qonce, Mvulo, 25 March; Monti, Hlanu, 29 March ; Katikati, Ne, 4 April; Komani, Mgbihelo, 6 April; Dorredrecht, Mgbihelo, 13 Apr I, Gala, Bmi, 16 April; Gcwuwa, Mvulo, 22 April; Umnta, Hlanu, 26 April; Kokedad, Hlanu, 3 May. Esuka e Kimberley Yoba se Middellburg. Tatu, 27 March; Cradock, Hlanu, 29 March; Steynsburg, Bini, 2 April; Burchersdorp, Hlanu, 5 April. Alivali North, Ne, 11 April; Baikly Elst Tatu, 17 April.—BT.

UBUHLE KWA MNTANDA —Uti obambele kwesika Aluyanda esikwesi siqingata sisi Qonce : Kuyinto elingileyo ukuxela into esakuba ikakule, ndingileyo. Akako nto uhukela njengento eyenziwe ngu Mr. William Mnyanda kunye nemp*i yake ekwakela Opezu Konke indukazi eknobakala ukuba iyakuba ntlc; baye bezukela ngapandle kokukataza namani ngayo notn, fundisi wabo elileli kongelele umntu*zi* xnatanga nayo. Enye into ndinobisi ukuti umfundisi weso siqingata oodaka ka Tam, ra ndifutsi kokwam ukubona ukuba akosakatunda kona ngenxa yeso sakiwo sifauele ukuba sibe sen zini onomfundisi, kodwa ke ashilazise Tamara lodwa koko siwihlalane no Alkangiso ngupandle kweweke za siteta imanyiso njengoko injalo, endinestamba lokuba iyakuba yindwe kuti lento; ngumzekelo omhle kanjalo. Okunye ixela into engenziweza namhla luhlanga ukuba inkosi Ezamanenkazi Ikhuzi Ezitlungwayo Zofele zizqala kwi 4s. Ezamanenkazi Ishuzi Izihlanga Zofele beziamkele ilizwi lika Tixo nobukosi bazo ngebungqindlili namhla ukuba bezle zavayizina imiyalelo ka Yehova uhe ngesokuzihlala ngokupakade, hant, ngokuba unyaka ukuba sigene imiyalelo yake kulala. Gumbi ke, akufani nto yimbi, ke, pambili into ka Mnyanda usenkondweni, ke selunga uuzi ukowabob uugati mhlanu izifake kulo kumpi nemp*i yake, impi yase bhotwe* Enkangiso, Tamara Rodi, Zimbaba, Sitalo, Tyeci, Altonbe, i Buffaloford, ipose izanda, yandule ke ukuti, Huntuu Satana. Kodwa uma ukuba i Nkosi iyavuna nduga ndingavyona lomi ni nokuba andisokennenza into ukuze ihambo lam khwazi ukuti ndaka ndisvbona into eyenziwe sithi luhlanga ngapandle kotomti ombhele, siyenzela um Dalu wetu.*

UMBULO KWA MNTANDA —Uti obambele kwesika Aluyanda esikwesi siqingata sisi Qonce : Kuyinto elingileyo ukuxela into esakuba ikakule, ndingileyo. Akako nto uhukela njengento eyenziwe ngu Mr. William Mnyanda kunye nemp*i yake ekwakela Opezu Konke indukazi eknobakala ukuba iyakuba ntlc; baye bezukela ngapandle kokukataza namani ngayo notn, fundisi wabo elileli kongelele umntu*zi* xnatanga nayo. Enye into ndinobisi ukuti umfundisi weso siqingata oodaka ka Tam, ra ndifutsi kokwam ukubona ukuba akosakatunda kona ngenxa yeso sakiwo sifauele ukuba sibe sen zini onomfundisi, kodwa ke ashilazise Tamara lodwa koko siwihlalane no Alkangiso ngupandle kweweke za siteta imanyiso njengoko injalo, endinestamba lokuba iyakuba yindwe kuti lento; ngumzekelo omhle kanjalo. Okunye ixela into engenziweza namhla luhlanga ukuba inkosi Ezamanenkazi Ikhuzi Ezitlungwayo Zofele zizqala kwi 4s. Ezamanenkazi Ishuzi Izihlanga Zofele beziamkele ilizwi lika Tixo nobukosi bazo ngebungqindlili namhla ukuba bezle zavayizina imiyalelo ka Yehova uhe ngesokuzihlala ngokupakade, hant, ngokuba unyaka ukuba sigene imiyalelo yake kulala. Gumbi ke, akufani nto yimbi, ke, pambili into ka Mnyanda usenkondweni, ke selunga uuzi ukowabob uugati mhlanu izifake kulo kumpi nemp*i yake, impi yase bhotwe* Enkangiso, Tamara Rodi, Zimbaba, Sitalo, Tyeci, Altonbe, i Buffaloford, ipose izanda, yandule ke ukuti, Huntuu Satana. Kodwa uma ukuba i Nkosi iyavuna nduga ndingavyona lomi ni nokuba andisokennenza into ukuze ihambo lam khwazi ukuti ndaka ndisvbona into eyenziwe sithi luhlanga ngapandle kotomti ombhele, siyenzela um Dalu wetu.*

UMBULO KWA MNTANDA —Uti obambele kwesika Aluyanda esikwesi siqingata sisi Qonce : Kuyinto elingileyo ukuxela into esakuba ikakule, ndingileyo. Akako nto uhukela njengento eyenziwe ngu Mr. William Mnyanda kunye nemp*i yake ekwakela Opezu Konke indukazi eknobakala ukuba iyakuba ntlc; baye bezukela ngapandle kokukataza namani ngayo notn, fundisi wabo elileli kongelele umntu*zi* xnatanga nayo. Enye into ndinobisi ukuti umfundisi weso siqingata oodaka ka Tam, ra ndifutsi kokwam ukubona ukuba akosakatunda kona ngenxa yeso sakiwo sifauele ukuba sibe sen zini onomfundisi, kodwa ke ashilazise Tamara lodwa koko siwihlalane no Alkangiso ngupandle kweweke za siteta imanyiso njengoko injalo, endinestamba lokuba iyakuba yindwe kuti lento; ngumzekelo omhle kanjalo. Okunye ixela into engenziweza namhla luhlanga ukuba inkosi Ezamanenkazi Ikhuzi Ezitlungwayo Zofele zizqala kwi 4s. Ezamanenkazi Ishuzi Izihlanga Zofele beziamkele ilizwi lika Tixo nobukosi bazo ngebungqindlili namhla ukuba bezle zavayizina imiyalelo ka Yehova uhe ngesokuzihlala ngokupakade, hant, ngokuba unyaka ukuba sigene imiyalelo yake kulala. Gumbi ke, akufani nto yimbi, ke, pambili into ka Mnyanda usenkondweni, ke selunga uuzi ukowabob uugati mhlanu izifake kulo kumpi nemp*i yake, impi yase bhotwe* Enkangiso, Tamara Rodi, Zimbaba, Sitalo, Tyeci, Altonbe, i Buffaloford, ipose izanda, yandule ke ukuti, Huntuu Satana. Kodwa uma ukuba i Nkosi iyavuna nduga ndingavyona lomi ni nokuba andisokennenza into ukuze ihambo lam khwazi ukuti ndaka ndisvbona into eyenziwe sithi luhlanga ngapandle kotomti ombhele, siyenzela um Dalu wetu.*

## W. M CUTHBERT & CO BASE QONCE.

Ezamanenkazi Ikhuzi Ezitlungwayo Zofele zizqala kwi 4s. Ezamanenkazi Ishuzi Izihlanga Zofele zizqala kwi 5s. Ezamanenkazi Izihlanga ne Shuzi ze Kanvas emfusa nc blown zizqala kwi 4s. 6d. Izihlanga Zemitya (Rope Shoes) Izipesheli i Felskuni Ezimnyama Zama,doda kwa Nezimfusa nge 5s. (3d.

YIYONA VENKILE EZIHLANGU ZOMELELEYO RULE DOLOPU.

## CUTHBERT &CO, MARKET SQUARE, KING WILLIAMS TOWN.

YIYONA VENKILE EZIHLANGU ZOMELELEYO RULE DOLOPU.

## ORSMOND’S

*The GREAT AFRICAN* THE STANDARD DOMESTIC MEDICINE FOR FEVERS AND COMPLAINTS OF TUB pamphlet. GREAT AFRICAN For Eczema, Eruptions, Bores, Syphilite and Scrofulous

## DI S E A S E BLOOD

*Unirvalted Tonic for* FEMALES. Specific for Kidney and JIurinary Disorders. PURIFIER. COLIC, DIARRHEA, DYSENTERY GREAT AFRICAN FRUIT PILLS. For Liver, Stomach and Bowels. The Cure for Piles and Constipation. Are Mild and Effective.

*THE GREAT AFRICAN* HERBAL OINTMENT. Skin Diseases, Piles, Rheumatism, Sprains, in Joints and Muscles, Inflammatory Swellings.

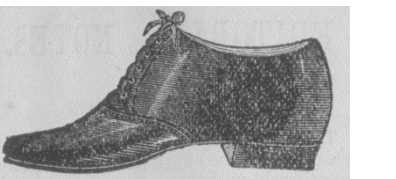
## MEDICAL HALL

## KING WILLIAM’S TOWN.

E QONCE, YEYONA NDAWO YOKUTENGA *Imisesane yoku “Ngeja,” Imisesane Yokutshata, Amacici Namehlo (Spectacles).*

KANANJALO XA UFUNA UKUHLAZIYA IWOTSHI.

MARKET SQUARE, Kingwilliamstown.



### BISSEKER GEORGE & CO.

101, Main Street, E Bhai.

BAGCINA IMFUMBA

## IZIHLANGU NE SHUZI

EZILUNGWE UKUHLAMBA, UKUKWELA, NO. KUHHLALA EKAYA, UKUHAMBA ISIKOLO, NOKU- SEBENZA [EMASIMINI.

Ezo Bissekер, George & Co. Izihlangu zihle nase mehlweni; ziyamhlaa kamnandi umntu, zinjalonje ziyaxolisa.

*Bonke abalesi be Mvo NELTSo LOMZI ba- yanoyishwa ukuba bezekulomzi, batengeniso abazengeniso kona.*

## Bisseker, George & Go.,

INDLU YESI HLANCU -ZENTSHTA - YENDLVOO, PORT ELIZABETH.

## Ukuba Uyafa?

Hamba uyekuwatenga AMAYEZA ako kwa

NE VENKILE

E QONCE.

SIAWAZISA umzi wakowetu ukuba livivivo

**’BHOTWE LAWO**

Elinamasebe onke e Business,

Ivenkile kaloko inento yonke ngamanani alula, sinoku templa sitengisele abakude nabakufupi. IQIYA zetu *ze* silika zimle, zinkulu, kwanteyali zohlobo. ICUBA letu lana Mpondo nelama Xesibe i Bhulalike ngokulama—silitumela nakwindawo ezikude.

IMPAHLA YEBHOLA ne Tennis no Foot Ball, itshipu kakulu. Incwadi zouke zee Xhosha, liko namculo ase Wesile. Ingama eminandzi zifika i Kwata zonke. Kuko ne Sebe Lezihlanga elipetwe ngu Mr. C. P. Matyolo, ingcibi kakuhle.

PAUL XINIWE,

General Agent, Market-Square.

IKAYA LASE MONTI SELIVULIWE.

IRVING & CO,

GRAHAMs TOWN,

BATENGA

YONKE INTO EKUKUTYA

## EKA-POWELL INCINDI YE ANISEED

UKHLOKHOLO LWAKO ILIZWE LIPELA LILIYEZA ELIQONDWAYO LOKOHOLOKHOLO. Ukutengwa kwalo okubanzi kulo lonke ilizwe kwalata ubuxabiso balo. 20000 ABENZI-MAYEZA ABALIT ENGISAYO.

Abo bangazanga balingisa, mabake balingile kwangoko.

EMARHOTWENI NASE MANOQUGWALENI NGOKULINGANAYO, Eka-Bowell Incindi ye Aniseed inkingamele ye YEZA LOKUHOHLELA eludin. Ukutemiswa kwalo okubanzi kulo lonke elokakanya kulilokomisa ukulunga kwalo.

T IBEHLE LIZICOMBULIWE IZIKOHLA LA LUKOHLA LA KWANGOKUHLIWA LI-KUNCLELA KYMSINYANE. ZWALASENI UMSENEKSO ONGENTLA EMAPHELEN ELISONGERWE KAWO.

Kangelani amagama ati “ Thomas Powell, Blackfriars Road, London, ” kwisigqibo sakwa Kulumen.

Ngingayamkeli Imilinganiso. Labako 1824.

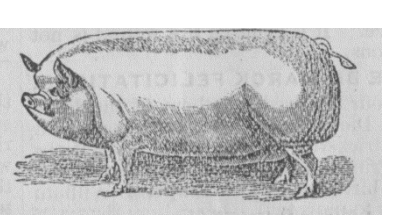
BASEZIFAMENI XA BAZE KUTENGA BA- NGALLILIBALI ELIYEZA LIDLALA LOKOHOLO.

UKUHOHLENI. EKA-POWELL INCINDI YE ANISH

KWISIFUBA SOM’BEFU, NOMFULAWENJA, &c.

UTENGISWA NGENBENZI-MAYEZA NE E VENKILE, KWELASE OSTRELIYA, ne NYUZILANI ne KOLONI ZASE KAPA.

Ibhofite 1s. 9d. ne 2s. 6d.



## KWABAKUFUPI NABAKUDE

(Ngokukodwa AMA TRANSPORT)

## IMIXESHA YENYAMA

## NE ZONKA,

NINOKUYIFUMANA KO

## Smith & Gregg,

UMELENE NAMAGQUBA APAKATI

CAMBRIDGE ROAD,

KING WILLIAMS TOWN.

E QONCE, YEYONA NDAWO YOKUTENGA *Imisesane yoku “Ngeja,” Imisesane Yokutshata, Amacici Namehlo (Spectacles).*

KANANJALO XA UFUNA UKUHLAZIYA IWOTSHI.

MARKET SQUARE, Kingwilliamstown.

CAMBRIDGE ROAD,

KING WILLIAMS TOWN

## A. J. Cross & Co.,

KING WILLIAMSTOWN

Esitsha Isaziso sika Tikoloshe.

## Kubaxhasi Abantsundu

## O.A. J. Cross & Co.

Banga bangazisa Abahlobo babo Abamnyama kuso sonke isiqingata sase Qonce, e Ngqusnwa, ukweziwe eziraulayo ukuba Base kwi Sitora Sabowigumbi le Marike. Bisaligcinile igama labo lokuba batengisa ngamaxabiso angapantsi kwawazo zonke ivenkile

APA E QONCE.

IPULUWA, ISALI, IHEMPE IBHULUKWE, IBHATYI, INGUBO NEZAMANKAZANA.

Umgubo, Ikofu, Iti, Iswekila—ngazwinye Into yonke etywayo.

*Basanika awona maxabiso nge NGQOOWA, UMBONA, nezinye intlobo zokuty,*

## A. J. Cross & Co.

## IKAYA LABANTSUNDU

NE VENKILE

E QONCE.

SIAWAZISA umzi wakowetu ukuba livivivo

**’BHOTWE LAWO**

Elinamasebe onke e Business,

Ivenkile kaloko inento yonke ngamanani alula, sinoku templa sitengisele abakude nabakufupi. IQIYA zetu *ze* silika zimle, zinkulu, kwanteyali zohlobo. ICUBA letu lana Mpondo nelama Xesibe i Bhulalike ngokulama—silitumela nakwindawo ezikude.

IMPAHLA YEBHOLA ne Tennis no Foot Ball, itshipu kakulu. Incwadi zouke zee Xhos