

DYER AND DYER

(LIMITED.)

KING WILLIAMSTOWN,

Impahla Entsha Yasehlotyeni.

Isuti Ezintsha ze Twidi ziqala kwi 16/6.

Isuti Ezintsha ze Diagonal Tweed Emnyama ziqala 25/.

Isuti Ezintsha ze Blue Serge ziqala kwi 25/.

Iminqwazi Emitsha, Ihempe, Izitadi, Izihlangu, Amaqhina, njalo-njalo.

Ibhulukwe Zamadoda Zekodi ziqala kwi 4 6.

Ihempe Zamadoda Zokusebenza ziqala kwi 1/ inyo.

I Flanellette Zamadoda ziqala kwi 1/3 inye.

Ngokubalulekileyo—Ibhulukwe Ezilungileyo Zamadoda ze Whipcord 6/6.

Ibhatyi Ezilungileyo Zamadoda ze Whipcord 10 '6.

Impahla ye Kriketi ne Tennis,

ISANDULUKUFIKA :

IBHATI ne BALLS, IZITAMPU, I-LEG GUARDS, I-GLOVES—zokudlala nozokunqanda emva kwe Wikiti. I RACQUETS ze TENNIS, IBHOLA, i NETI, njalo-njalo, yonke into efunekayo.

AMAXABISO AHLISIWEYO KWI CLUBS.

Eyona igqitiseleyo neyona itshipu kuzo zonke ngempahla eyenziwe Ngabasiki, ne Mpahla Zabafundisi, njalo-njalo. .

DYER NO DYER,

EQONCE.

ITUBA LOKWENZA IMALI.

Zisani bonke UBOYA benu

Zisani bonke UBOYA BEBHOKWE

Zisani wonke UMBONA wenu

Zisani onke AMAZIMBA enu

Zisani yonke INGQOLOWA yenu

Zisani yonke IHABILE yenu.

Nayo yonke enye imveliso eninayo naniya kufumana amanani Apa amileyo e Cash ngayo—YIZANI KUBEKANYE naniya kuhlala nisiza ko

JAMES HODGES and CO.

QUEENSTOWN

Iyeza Elingummangaliso.

BEECHAM'S PILLS

Zikulungele Ukuqunjelwa nezinye intlungu, ezinjle ngo Moya ne Ntlungu e Siswini, Intloko Ebulalayo, Ukuba nasi Yesi, Intluta nokuqunjelwa emva Kokutya, Ukupitizela kwe Ntloko, Nobundongela, Ukuqazazela Yingqele, Imfudumalo Zobushushu, Umnqumi, Ukupefumla Okuqapayo (Ipika), Ukungayi Ngasese, Ukujaduka Komzimba, Ukungalali Kamnandi, Amapupa Awoyikekayo, nako konke Ukungcangcazela, njalo njalo. Idosi yo- KUQALA INOKUNCEDA KWISITUBA SEMIZUZU ENGAMASHUMI MABINI. Asintsomi lonto. Utulwelwe ngamnye ucalwa ukuba utate ibhokisana yezi Pills, ziza kuvunywa ukuba ibhokisana yazo "ifanele i Pontii enesheleni."

I PILLS zika BITSHIM, zitatwe ngemigaqo emiselweyo, zibehle ziwapilise nge amankazana, Azedendi ukupilisa inqo nizimba.

Kwi Sisu esi Butataka; Nokungatandi Kutya; Nesibindi Esingapilileyo: zisebenza ngobugqi idosi ezimbalwa zetiza impiliso engummangaliso kwanamalungu Ayinqobo Emntwini; Zomeleza imisipa; zibuyisa intlaha yomntu obesekudala yatusabayo; zenza ukuba ubani abuye akutande bukali ukutya, zivuselela BONKE UBHLE BE MPIO NENKUTALO YONZIMBA Womntu, ezi Pilisi zidume ngokukodwa ekupilisei Icesina kmazwe ashushu. Ezi " zinyaniso " ezivunywanga yinyambalala yabantu, kuzo zonke indidi zabantu, obunye ubungqina obuqeleleyo ngobutataka bobu bokuba i *Pilisi zika Bilshim lelona yeza litengwayo ngapezu kwawo onke akoyo apa emhlabeni.* Incazo ezeleyo ebhokisani nganye. Lenzwa ngu THOMAS BEECHAM kupela, e St. Helens, Lancashire, England.

Litengiswa ngabapitikevi bamayeza bonke ezi Kolonini.

THOMAS BAILEY & CO., ABALUNGISELELI BENTO YONKE QUEENSTOWN

BANOKU kwanekela nantonina ongayibizayo ngawona manani apantsi anokufunyanwa apa Emzantsi-Afrika.

Kaniwaqwalasele amanani etu; nize nize kubona Impahla Engummangaliso ukulunga etengiswa ngalomanani.

Ezamadoda. Izihlangu Ezimitya-mide Ezomeleleyo.

6 6, 7/-, 8 6, 9/-

Ezamadoda Izihlangu Ezimityami futshani Ezomeleleyo.

5/-, 6/6, 7/6, 8/6

Ezamadoda i Felskuni Ezomeleleyo.

5/6, 7/6, 8/6

Ezamankazana Ezomeleleyo Zotwatwa.

5/-, 6/6, 7/6

Ezamankazana Ezimitya-Mide.

4/6, 5/-, 5/6

Ezamadoda Ibhulukwe Zezitofu (Tweed), 5/-, 6/11, 8/6 Ezamadoda Isuti Zesitofu.

ziqalela kwi 16/6

Ezamadoda Ihempe Ezilushica, ziqalela kwi 9d, ziyi 4/6 Ezamadoda Namakwenkwana Ikep, ziqalela 6 ½ d, de kuye 3/3

IMINQWAZI YAMADODA, IKAUSI, IKOLALA, INGXOWA ZABAHAMBI, INGXOWANA EZINTLE, NJALO-NJALO.

Iponti ekutengwe ngayo kwesetu isitora, itabata isituba seponti enesihlanu etenge kwezinye ivenkile.

THOS. BAILEY & CO., WEST END, E-KOMANI

PEACOCK BROS. NO WEIR, EKOMANI.

NGABATENGI abakulu Bokutya, benika awona Manani alungileyo. E Komani apa wakuke uyekuva into abayi kupayo pambi kobuba utengise nokuba kupina. Ihabile, Ezinkozo, Inqholowa, Irasi, Imbotyi, I-ertyis, Umbona, Amazimba. bahlele benawo.

JOHN LUMSDEN & CO., E GCUWA, TRANSKEI.

BAZISA Umzi Ontsundu okulo lonke ela Pe-sheya kwe Nciba okokuba BAZIKETELA NGOKWABO IMPAHLA yentlobo ntlobo zonke e SKOTILANE, engalungela imfuneko zomzi; nokokuba baya kuzingisa ukunikela

Abantsundu Abatenga nge Mali,

into ezifanele ixabiso layo.

BAVAVANYENI! NIBALINGE!

BON MARCHE

JOHN W. BAYES & CO., GHAMSTOWN.

IFANDESI LEMPAHLA KUMASEBE ONKE.

I Blanket zamabala ziqalela kwi 1s. 7 ½ d., Amabhayi abubanzi bupindiweyo 11 ½ d., Imiqulu Eqaqambileyo yokwenza ilokwe iqalelakwi 1 ¾ d. nge yadi, I 'Tweed' eziqaqambileyo zelokwe ziqalela kwi 3 ¾ d. nge yadi, I Flannelles 2 ½ d. nge yadi, Ezona zilungileyo i Printi zama Jamani nama Bhulu 6 ½ d. nge yadi, Iyali zoboya ezona Fishini zintsba ziqalela kwi 3s. kudo kube nga 30s. inye, I Quilts zamabala ziqala 1s. 11 ½ d., I Quilts ezimhlope ziqala 2s. 11d., Amakulu amahlana e " knitted skirts " 1s. 2d. inye.

Zonke impahla zibhalwe ngamanani acacileyo. Akuko nkohliso. Kwisebe le lokwe (Drapery) ngexesha le Fandee i 1s. ebifudula isapulwa nge xabiso le ponti iyakuyeywa

Isebe Lezinxibo lakwa BON MARCHE:

400 ibhulukwe zamadoda (Bedford Cord) ziqala kwi 4s. 11d. inye, I Suti zamadoda ze Tweed 21s. inye, I Felt Hats ezimapiko abanzi 2s. umnye, Ibhayti zamadoda ze Tweed ziqala kwi 6s., I Bhulukwe ze Tweed 3s. 6d.

QONDISISANI KAKUHLE—"Wonke ubani otenge izinxibo zexabiso eliyi ponti (£1) uyakwapelelwa isihelani ezi ntatu (3s.)

JOHN W. BAYES & CO., BON MARCHE
GRAHAMSTOWN, E-RINI



LEMINYAKA I 18



IGQITILEYO,

SINGENISE KWELILIZWE **IBLANKETE**

ZOBOYA *EZILUKWE NGOBUGCISA OBU*

BODWA, Igama lazo yi " EXTRA NAVY or MATTROSS "

Kungeniswe ngabanye intlobontlobo ezifana noluhlobo; esigqibe ke kwelokuba SIZIPAULE i BLANKETE ZONKE ngopawu esilungile na Komkulu ngohlobo lwemifa nekiso le yongamele lenteto.

Ukuba ufuna IBLANKETE YEYENENE, kangelisa kunene ukuba inawona umfanekiso we NGONYAMA kwelinye LAMASONDO ayo.

ZONKE EZI BLANKETE ZIZEZINGATANDATYUZWAYO.

ZONKE EZI BLANKETE ZILUNGILE ZITE GUNGQU

IBLANKETE NGANYE IYAYIVELA IMBOLA.

Kwivenkile enitonga kuzo-ke bizani Iblankete ozinomfanskiso we Ngonyama.

Ziya kubaku kuzo zonke ivenkile za Pesheya kwe Nciba nase zidolopini zonke.

APO ZIPAKULWA KONA KUKO

PEACOCK BROS, and WEIR, E QONCE.

Ngabo bodwa abanokubhala lomfanekiso we Ngonyama.

Beauchamp, Booth & Co.

EYONA VENKILE INKULU

NETENGLAYO

KINGWILLIAMSTOWN & QUEENSTOWN.

ITYALI

IPRINTI

ISETINI

IKELEKO

ISHITI ZEKOYI

Impahla Yomtshato Yonke.

BEAUCHAMP, BOOTH & CO.

E-QONCE, KINGWILLIAMSTOWN

J. W GARRET & CO.

LADY FRERE

IZITORA " EZITSHIPU."

ISEBENZA NGOBUGQI.

I-RHEUMATICURO!

IYEZA ELIKULU LASE SOUTH AFRICA.



Alizaka linqatyelwe ukupilisa izifo Zamatambo. Isinqe, ingqaqambo Zentloko.

Lingqinwe ngamawaka. Umenzi walo kupelu ngu

J. JONES, Cape Town.

LINOKUTENGWA NAPINA

G. P PERKS NO NYANA

E QONCE,

YEYONA NDAWO

YOKUTENGA. Imisesane yoku "Ngeja," Imisesane Yokutshata, Amacici Namehlo (Spectacles).

KANANJALO XA UFUNA

UKUHLAZIYA. IWOTSHI.

MARKET SQUARE,

Kingwilliamstown

GREAT AFRICAN

ORMSDON'S

PREPARATIONNS

The GREAT AFRICAN REMEDY.

THE STANDARD DOMESTIC MEDICINE FOR FEVER AND COMPLAINTS OF THE HOME

THE GREAT AFRICAN

For Eczema, Eruptions, Bera. Syphilitic and Scrofulous

DISEASE BLOOD

Unrivalled Tonic for FEMALES.

Specific for Kidney and Urinary Disorder.

PURIFIER.

FOR

COLIC, DIARRHEA, DYSENTERY

GREAT AFRICAN

FRUIT PILLS.

For Liver, Stomach and Bowel

The Cure for Piles and Constipation.

Are Mild and Effective.

THE GREAT AFRICAN

HERBAL OINTMENT.

For New and Old Sore, Skin Disease, Piles, Rheumatism, Sprain.

Pains in Joints and Muscle.

inflammatory Swelling

MEDICAL HALL

KING WILLIAM'S TOWN.

J. NEWING.

Umenzi Wempahla

(Ekomeni ye Maclean Square) E QONCE

UFUMANA IMPAHLA EZIPUMA NQO KUBENZI BAZO.

Impahla ze Tweed Zamanene. Impahla Zamadoda Zekodi neze Krikete.

Intlobo ezintle kunene ze Printi Nemichako ye Lokwe.

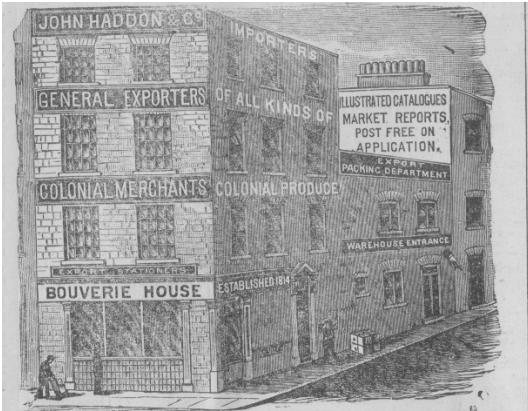
Impahla Yokwaka yentlobo zonke, Ikofu ne Swekile, njalo-njalo.

Yonke into intsha, ilungile, itshipu—Yizani kubona

Imveliso yomhlaba itengwa nge Cash ngamanani apakamileyo e Malike.

6msfr18109 5msfr18109

ESTABLISHED 1814.



IMPORTERS EXPORTERS

FIBRES OF ALL KINDS, DRUGS, DRYALSALTRIES, SPICES, HIDES, SKINS, TEA, COFFEE, COPRA, SUGAR GUMS, CURIOS, GENERAL PRODUCE,

MANCHESTER GOODS, DRAPERY, WOOLLENS, MEN'S CLOTHING, PROVISIONS, IRONMONGERY, TOOLS & MACHINERY.

REFERENCES to Customers in all parts of THE WORLD. We will send, post free, on application, our recently published

Volume on "TOE PRODUCES OF THE WORE." Every Planter, Estate Manager, or Produce Merchant should have a copy. It is the only volume of its kind ever published.

TERMS, SAMPLES, AND ILLUSTRATED CATALOGUES BY RETURN MAIL.

JOHN HADDON & CO.,

COLONIAL & INDIAN MERCHANTS, Bouverie House, Salisbury Square, E.C.

Cablegrams—"Dilutum. London." A B. C. Code used. Fourth Edition.

P. S. JEFFREY,

UNGA angabuhlela abatenga Evenkileni zake ngobubele bokumxhasa kwixesha eligqitileyo. Unqwenela ukwazisa

Umzi ose Kamastone nase Hewu

Ukuba ivenkile zake ezise

Kamastone, Didimana nase Donnybrook. Zizele ngoku Yimpahla

YALO MCHÉBO.

UYITENGISA NGAGQITISELEYO NGOBURPANTSU WONA AMANANI E ENGE NEMALI UMNTU.

Eziketiweyo zona Ibhulukwe Zamadoda—ezivulekileyo ezantsi. Izihlangu zamadoda ezizitende zide izitofu—intlobo ezintsha. Ityali Ezibuhlungu Zoboya—zamanakzana. Intlobo ze Printi.

Yonke into etengiswa ngabantu itengwa ngemali ngamaxabiso anokuf unyanwani nani.

Uboya Begusha ne bokwe bufuneka mu.

ZONKE IZIKWELTI ZALOMCEBO KUFUNEKA ZIHLAULWE PAMBI KOKUPELA KWALO NYAKA, okanye ziya kunikelwa kubaqni.

Amayeza ka Cook Abantsundu.

UMZI ontsundu ucelelwa ukuba ukangelise lamayeza abalulekileyo.

Elika Iyeza Lesisu Nokuzazaza. 1/6 ibottle.

Elika Iyeza Lukokohlala (Lingamafuta). 1/6 ibottle.

Aka Amafuta Ezilonda Nokwekwe. 9d. ibottle.

Elika Iyeza Lepalo. 1/6 ibottle.

Ezika; Iplis. 1/ ngebokisana.

Eka Incindi Yezinyo. 6d. ngebotile.

Oka Umaliza Westepu Sabantwana. 6d. ngebotile.

Oka Umgutanya Wamehlo. 6d. ngesiqunyana

Oka Umaliza we Cesine. 8/6.

Niqondise ukuba igama ngu

G. E. COOK, Chemist, E QONCE.

Ngawenkohliso angenalo igama lake.

Owatengisayo e Mount Frere, kwa Baca, J. J. YATES, "Umatendela."

EZINGE MFUNDO. MARKET STREET,

Kingwilliamstown.

ST LUKES'S INDUSTRIAL INSTITUTE. Isinala yase Newlands (Nzaruni), East London Yomsebenzi.

Intshala Enkulu :—Ms. J. E. MOONEY, B.A.

Kwishe lokucwela i " odolo " zempahla yendlu ziyamkelwa ezinjenge Tafle, Ibhanki, Ibhodi Zezikula, i Desika, i Kabati ezinengango zefestile, ne Kabati nje kodwa, i Sofa, izibingelelo (altars), ideska na ze Litani, Izitulo zaba peresite (glastonbury chairs), iteyya zamalizo, njalo-njalo.

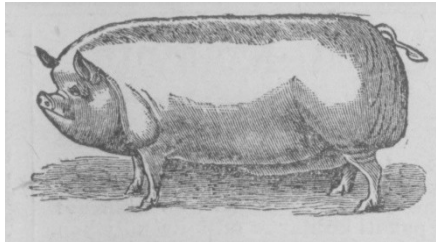
R. W. STUMBLERS, 184 Umfundisi Opeteyo we Buto le S.P.G.

I DESK EZINEZIHLALO ZAZO, EZENZIWE KAKUHLE NANGENDELELA EMANGALISAYO NANGAPEZU KWEZIVELA KWAMANYE AMAZWE, NAMAXABISO ANGENANO

LENZIWA KUPELA NGU H. J. DOBLE, Mayen

MACLEAN STREET, (PAMBI KO BHANI), E QONCE.

IZAZISO ZAKOMKULU.



KWABAKUFUPI NABAKUDE

(Ngokukodwa AMA TRANSPORT)

IMIXESHO YENYAMA

NE ZONKA, NINOKUYIFUMANA KO

Smith & Gregg,

UMELENE NAMAGQUBA APAKATI

CAMBRIDGE || ROAD,

KING WILLIAMS TOWN.

ZISHICILELWA 'NGE 'GUNYA.

ISAZISO SAKOMKULU.—No 20, 1894.

Kwi Ofisi ka Nocanda, E Kapa, 15 January, 1894.

NGEMIMSELO ye Siquendu II, Umnto No. 15 ka 1887, knyaziswa ngokubanzi ukuba lemihlaba ilandelayo yakwa Rulumeni, ekwi Siquingata sase Matatiele iya kutengiswa eFandisini eliya kuba pambi kwe Ofisi ye Mantyi e MATATIELE, ngo 10 o'clock am. kusasa, ngolwesi NE, 26 APRIL, 1891, pantsi kwemigqaliselo nemimopiso yo Mctio ongentla, nangezimi selo zehlandise ezibaluleko, nezingatixelwe ngalomini yefandesi.

Isiziba ngasinye siya kutengiswa ngemali esixhooywe ngayo, waye ote wabhida ngepezu kwabanye, kananjalo ngemali euge-ngapantsi koxhonywe ngayo, eyakuba ngo, wuteneileyo, um'ngi ke lowokoba kokwake ukuyihlala yonke ngaxanye nokuba yinxalenye yayo ngalomhla we Fandesi. Ekoti ke

(i) Kungoko ntlaulo ngalomhla wefandesi isahlulo seshumi sirolo wengenya ezintandati, ize esinye isihlulo seshumi sirolo kwinyanga ezilishumi linambini ezilandela umhla wefandesi.

(ii) Ikuba imali ehlaulwe ngomhla we fandesi ingapantsi kwesahlulo seshumi isisalela sesahluko seshumi sohlalulwa ekupantsi kweyinyanga ezintandati, ize isahlulo seshumi esisalelelo sirolo kwinyanga ezilishumi linambini kusalela kumhla we fandesi.

(iii) Ukuba imali ehlaulwe ngomhla we fandesi ipakati kwesahlulo seshumi nesahlulo sesihlalo sahlulwe kwinyanga ezilishumi iuambini emva kwefandesi elo.

Inzala yezontlalo yaba ziponti zone ekulwini ngonyaka; ekoti ukuhlulwa kwayo nenzala leyo kuqimisela ngabemali abafezekileyo ababini ngokwanelhaka ko Mantyi —abemali abofika bazibopelele kanye nangabanye ukuba ngabo abanetyala, bengena kuzilandulela nangantoni.

Indleko zocanda, njalo njalo, netayitile (12/6) zohlalulwa ku Mantyi, nakubani onguwumbi owonikwa igunya loko kwangalomhla wefandesi

Unotenga lowo wofika abhale umnqopiso ngezihlulo ezine nezihlalo eyama ukuba wohlalulwa inzala—eziponti ezine neekulu, angati ukuba wayerole ngomhla wefandesi ngepezu kwesahlulo sesihlalo, aselwe-nzela umnqopiso isisalela semali yentengo leyo. Unotenga woba nelungelo lokuhlala lomini yonke mhlambi isahlulo semali yalumnqopiso, kungengapantsi kwamashumi omahlano eponti.

Umfanekiso walemihlaba, kwakunye ne zimiselo zefandesi, zingabonwa kwi ofisi yo Nocanda e Kapa, nakwi ofisi yo Mantyi e Matatiele.

J. TEMPLER HORNE.

Unocanda Omkulu.

EMBO.

Isiqingata sase Matatiele.

Lot No 7546, isiziba somhlaba esikwisiqingata sase Matatiele, ekintya yi Glenleary, ubukulu 803 imokolo 18 square rods. Ngasontla upele ngodonga olungapakati lomlambo oli Tyinira, ngazantsi entshonolanga ngelali yabantsundu, ngase mpuma. langa nge Drummondelliot, ngasentla entshonolanga nge Standford. Inani oxhonywe ngalo £510 Indleko zocando, njalo njalo, £16 10/7; itaitile 12/6.

Lot No 7517, oyi George herbert, ubukulu zimokolo ezi 990; ngasentla empumalanga upele nge Etheldale, ngazantsi entshonolanga ngodonga olungapakati lwe Tyinira, ngazantsi empumalanga nge Harryebden, ngentla entshonolanga ngelali yabantsundu. Uxhonywe nge £175; indleko zocando njalo njalo, £18 19/9; itaitile 12/3.

Lot No 7548, oyi Drummondelliot, ubukulu 1079 imokolo, ngasentla upele ngodonga olungapakati lwe Tyinira, ngazantsi ngelali yabantsundu, empumalanga nge Polygon, ngase nshonolanga yi Glenleary; Uxhonywe nge £175; indleko zocando njalo njalo £20 5/6; itaitile 12/3.

Lot No 7549 oyi Polygon, ubukulu 1115 imokolo, ngasentla upele ngodonga olungapakati lwe Tyinira, ngazantsi entshonolanga nge Drummondelliot, ngasentla empumalanga ngelali yabantsundu ne Simpson, ngase nshonolanga lidlelo lase Matatiele. Uxhonywe nge £70; indleko zocando njalo njalo £27 17/; itaitile 12/3.

Lot No 7554, oyi Donald, ubukulu 1011 imokolo; ngasentla entshonolanga upele nge Wallace, ngazantsi entshonolanga nge Martinfield, nodonga olungapakati lwe Tyinira. Uxhonywe nge £710; indleko zocando njalo njalo £30 12/9, itaitile 12/3.

Lot No 7555, oyi Wallace, ubukulu 962 imokolo, ngasentla entshonolanga upele nge Etheldale ue St Pauls, ngazantsi empumalanga nge Donald ne St Pauls, ngentla empumalanga nge St Pauls nodonga olunga pakati lwe Tyinira, ngazantsi entshonolanga nge Martinfield, nodonga olungapakati lwe Tyinira. Uxhonywe nge £675; indleko zocando njalo njalo £26 6/; itaitile 12/3.

Lot No 7556, oyi Etheldale, ubukulu 1233 imokolo, ngasentla entshonolanga upele nge Kosana ne Springside, ngazantsi empumalanga nge Wallace, ngentla empumalanga nge Springside nodonga olungapakati lwe Tyinira, ngazantsi entshonolanga nge Springside, Georgeberbert, Harryebden, ne Charlesbrownlee. Uxhonywe nge £860; indleko zocando njalo njalo £27 3/10, itaitile 12/3.

Lot No 7557, oyi Cochet, ubukulu 338 imokolo; ngentla entshonolanga upele nge lali yabantsundu, ngazantsi empumalanga nge Kosana, ngentla empumalanga ngodonga olungapakati lwe Tyinira, ngazantsi entshonolanga yi Lali yabantsundu. Uxhonywe nge £220; indleko zocando njalo njalo £13 16/6, itaitile 12/3.

Lot No 7550, oyi Simpson, ubukulu 1211 imokolo 290 square rods; ngasentla upele nge Lali yabantsundu (i Khuaa), ngazantsi entshonolanga nge Polygon, empumalanga ngedlelo lase Matatiele, entshonolanga nge Polygon. Uxhonywe nge £850; indleko zocando £19 10/; itaitile 12/3.

Lot No 7551, oyi Harryebden, ubukulu 875 imokolo; ngentla empumalanga upele nge Etheldale, ngazantsi entshonolanga ngodonga olungapakati lwe Tyinira, ngazantsi empumalanga nge Charlesbrownlee, ngentla entshonolanga nge Georgeberbert; uxhonywe nge £440; indleko zocando njalo njalo £17 7/; itaitile 12/3.

Lot No 7552 oyi Charlesbrownlee, ubukulu 789 imokolo; ngentla upele nge Harryebden, ngazantsi empumalanga nge Martinfield, ngentla empumalanga nge Etheldale, ngentla entshonolanga nge

Harryebden, ngazantsi ngodonga olunga, pakati lwe Tyinira. Uxhonywe nge £490; indleko zocando njalo njalo £16 6/6, itaitile 12/3.

Lot No 7553, oyi Martinfield, ubukulu 1013 imokolo; ngentla entshonolanga upele nge Charlesbrownlee, ngazantsi ngodonga olungapakati kwe Tyinira, ngase mpumala. nge Donald, ngentla empumalanga nge Wallace. Uxhonywe nge £760; indleko zocando njalo njalo £23 7/6, itaitile 12/3.

Edolopini yase Matatiele.

Lot No 7435, Isiziba somhlaba ose dolo, pini yase M tatiele, ekuti va yi Erf yelitye lika Gaskill, ubukulu 207 square yards 98 square feet, ngamacala onke upele ngedlelo. Uxhonywe nge £5; indleko zocando njalo njalo £6 15/; itaitile 12/3. (Ukukungiswa kwalomzi okolixabiso le £220 kofaneka kuhlalulwe ngamnteng ngomhla wefandesi.)

E CUMAKALA.

Kwakona ngokwe Saziso Sakomkulu, No. 39, 1894, pantsi kwemigqaso yefandesi lase Matatiele, kuya kutengiswa imihlaba ekwi Siquingata sase Cumakala, pambi kwe Ofisi ye Mantyi yase CUMAKALA, ngentsimbi yeshumi kusasa, ngolwesi HLANU, JUNE 8, 1894.

Lot No 7576, umhlaba okwi Siquingata sase Cumakala, kubu Felkornet No 1, ongu Lot No 2, kufupi nomzane wase Cumakala i ubukulu 312 square rods 42 square feet; ngasentla entshonolanga ute xa ngedlelo, ngazantsi empumalanga nge strata, ngentla empumalanga ngomzi womntu nangazantsi entshonolanga. Uxhonywe nge £1, indleko zocando £3 5/6, itaitile 12/3.

Lot No 7577, ongu Lot No 4 kufupi nomzane wase Cumakala, ubukulu 312 square rods 42 square feet; ngasentla entshonolanga ute xa ngedlelo, ngazantsi entshonolanga ngezantsi empumalanga ngomzi womntu, kwananngazantsi empumalanga. Uxhonywe nge £1, indleko zocando £3 5/6, itaitile 12/3.

Lot No 7578 ongu Lot No 7, kufupi nomzane wase Cumakala; ubukulu 2 imokolo 79 square rods 3 square feet; ngasentla entshonolanga ute xa ngedlelo, ngazantsi empumalanga ngezantsi empumalanga ngomzi womntu, nangeZantsi entshona. langa. Uxhonywe nge £2 10/; indleko zocando £3 5/6, itaitile 12/3.

Lot No 7579, ongu Lot No 8 kufupi nomzane wase Cumakala, ubukulu 1 imokolo 39 square rods 77 square feet; ngasentla entshonolanga ute xa ngedlelo, ngazantsi empumalanga ngedlelo, ngentla empumalanga ngezantsi empumalanga ngomhlabu womntu. Uxhonywe nge £1 10/; indleko zocando £3 5/6, itaitile 12/3.

Lot No 7580, ongu Lot No 9 kufupi nomzane wase Cumakala; ubukulu 2 imokolo 79 square rods 3 square feet; ngasentla entshonolanga ute xa ngedlelo, ngazantsi empumalanga ngezantsi empumalanga ngomhlabu womntu. Uxhonywe nge £2 10/; indleko zocando £3 5/6, itaitile 12/3.

Lot No 7581 ongu Lot No 14, kufupi nomzane wase Cumakala; ubukulu 566 square rods 137 square feet. Uxhonywe nge £1 10/; indleko zocando £3 5/6, itaitile 12/3.

Lot No 7582 ongu Lot No 15, kufupi nomzane wase Cumakala, ubukulu 1 imokolo 250 square rods 65 square feet. Uxhonywe nge £2, indleko zocando £3 5/6, itaitile 12/3.

Lot No 7583 ongu Lot No 16, kufupi no mzana wase Cumakala; ubukulu 1 imokolo 250 square rods 65 square feet. Uxhonywe nge £2, indleko zocando £3 5/6, itaitile 12/3.

Lot No 7584 ongu Lot No 17, kufupi no mzana wase Cumakala; ubukulu 283 square rods 67 square feet. Uxhonywe nge £1, indleko zocando £3 5/6, itaitile 12/3.

Lot No 7585 ongu Lot No 18, kufupi no mzana wase Cumakala; ubukulu 1 imokolo 25 square rods 65 square feet. Uxho. nywe nge £5, indleko zocando £3 5/6, itaitile 12/3.

Lot No 7586 ongu Lot No 19, kufupi no mzana wase Cumakala; ubukulu 4 imokolo 434 square rods 122 square feet. Uxho. nywe nge £5, indleko zocando £3 5/6, itaitile 12/3.

Lot No 7587 ongu Lot No 23, kufupi no mzana wase Cumakala; ubukulu 283 square rods 67 square feet. Uxhonywe nge £1, indleko zocando £3 5/6, itaitile 12/3.

Lot No 7588 ongu Lot No 24, kufupi no mzana wase Cumakala; ubukulu 566 square rods 140 square feet. Uxhonywe nge £1 10/; indleko zocando £3 5/6, itaitile 12/3.

Kwakona ngokwe Saziso Sakomkulu, No. 29, 1894, pantsi kwemigqaso yefandesi lase Matatiele, kuya kutengiswa imihlaba ekwi Siquingata sase Monti, pambi kwe Ofisi ye Mantyi yase MONTI, ngentsimbi yeshumi linanye kusasa, ngolwesi NE, 12 APRIL 1894.

E MONTI.

Lot No. 7558 kumandla wase Monti kabu Felkornet No. 7, ongu Lot No. 30, kwilali yase Brakfontein, ubukulu 11 imokolo, 33 square rods; ngasentla-Nshonolanga ute xha nge farm 341, ngazantsi ngo lot 29, ngase Mpumalanga ngomlambo. Uxhonywe nge £10, indleko zocando £7 19 3/; itaitile 12/3

Lot No. 7559 ongu Lot 14 we farm 29, ubukulu 237 moud, 256 square rods; ngasentla ute xha ngo lot 10, 11 ne 13, ngazantsi nge farm No. 30 no lot 15, ngase Nshonolanga ngo lot 15. Uxhonywe nge £178, indleko zocando £11 61., itaitile 12/3.

Lot No. 7560 ongu Lot 9, Block B. Lilyfontein, ubukulu 22 morge, 282 square rods; ngasentla nangentla.Mpumalanga ute xha ngomlambo, ngazantsi.Mpumalanga ngo lot 3010, ngentla-Mpumalanga ngedlelo, ngazantsi-Nshonolanga nge Dwadwa. Uxhonywe nge £17, indleko zocando £9 1/3, itaitile 12/3.

Lot No. 7561 ongu Lot Block B. Lilyfontein, ubukulu 33 imokolo ??? square rods; ngasentla.Mpumalanga ute xha ngedlelo, ngazantsi-Nshonolanga nge Dwadwa, ngase Mpumalanga ngo lot No 12, ngentla. Nshonolanga ngomlambo. Uxhonywe nge £25, indleko zocando £8 3/; itaitile 12/3.

Lot No. 7562 ongu Lot 13 ye farm 29, ubukulu 152, imokolo 453, 50 square rods; ngasentla ute xha ngo lot No. 9, ngazantsi ngo lot No. 15, ngase Nshonolanga ngo lot 12 Uxhonywe nge £115, indleko zocando £10 8/3, itaitile 12/3.

Lot No. 7563 ongu Lot No. 6 we farm 38S, 398, ubukulu 211 imokolo, 68 square rods; ngasentla ute xha nge farm 37, ngazantsi ngo lot No. 7, Empumalanga ngodonga olungase Nshonolanga lwe Bhuloro, ngase Nshonolanga ngo lot No. 5. Uxho. nywe nge £200, indleko zocando £15 16/9, itaitile 12/3.

Lot No. 7564 ongu Lot 2 Ecintsa, ubukulu 153 imokolo, 466 square rood; ngasentla ute xha ngo lot No. 3 ye farm XXX, ngazantsi-Nshonolanga ngo lot 3 ye farm NXXIV ngase Mpumalanga ngo lot 1 ye farm XXX ngazantsi Nshonolanga ngo lot farm XXXIV. Uxhonywe nge £115, indleko zocando £11 10/9, itaitile 12/3.

Published by the Proprietor, J. TENGO JABAVU, at Smith Street, Kingwilliamstown.