

## DYER AND DYER

(LIMITED.)

KING WILLIAMSTOWN,

### Impahla Entsha Yasehlotyeni.

Isuti Ezintsha ze Twidi ziqala kwi 16/6.

Isuti Ezintsha ze Diagonal Tweed Emnyama ziqala 25/.

Isuti Ezintsha ze Blue Serge ziqala kwi 25/.

Iminqwazi Emitsha, Ihempe, Izitadi, Izihlangu, Amaqhina, njalo-njalo.

Ibhulukwe Zamadoda Zekodi ziqala kwi 4 6.

Ihempe Zamadoda Zokusebenza ziqala kwi 1/ inyo.

I Flanellette Zamadoda ziqala kwi 1/3 inye.

Ngokubalulekileyo—Ibhulukwe Ezilungileyo Zamadoda ze Whipcord 6/6.

Ibhatyi Ezilungileyo Zamadoda ze Whipcord 10 '6.

### Impahla ye Kriketi ne Tennis,

ISANDULUKUFIKA :

IBHATI ne BALLS, IZITAMPU, I-LEG GUARDS, I-GLOVES—zokudlala nozokunqanda emva kwe Wikiti. I RACQUETS ze TENNIS, IBHOLA, i NETI, njalo-njalo, yonke into efunekayo.

AMAXABISO AHLISIWEYO KWI CLUBS.

Eyona igqitiseleyo neyona itshipu kuzo zonke ngempahla eyenziwe Ngabasiki, ne Mpahla Zabafundisi, njalo-njalo. .

### DYER NO DYER,

### EQONCE.

### ITUBA LOKWENZA IMALI.

Zisani bonke UBOYA benu

Zisani bonke UBOYA BEBHOKWE

Zisani wonke UMBONA wenu

Zisani onke AMAZIMBA enu

Zisani yonke INGQOLOWA yenu

Zisani yonke IHABILE yenu.

Nayo yonke enye imveliso eninayo naniya kufumana amanani Apa amileyo e Cash ngayo—YIZANI KUBEKANYE naniya kuhlala nisiza ko

### JAMES HODGES and CO.

### QUEENSTOWN

Iyeza Elingummangaliso.

### BEECHAM'S PILLS

Zikulungele Ukuqunjelwa nezinye intlungu, ezinjle ngo Moya ne Ntlungu e Siswini, Intloko Ebulalayo, Ukuba nasi Yesi, Intluta nokuqunjelwa emva Kokutya, Ukupitizela kwe Ntloko, Nobundongela, Ukuqazazela Yingqele, Imfudumalo Zobushushu, Umnqumi, Ukupefumla Okuqapayo (Ipika), Ukungayi Ngasese, Ukujaduka Komzimba, Ukungalali Kamnandi, Amapupa Awoyikekayo, nako konke Ukungcangazela, njalo njalo. Idosi yo- KUQALA INOKUNCEDA KWISITUBA SEMIZUZU ENGAMASHUMI MABINI. Asintsomi lonto. Utulwelwe ngamnye ucalwa ukuba utate ibhokisana yezi Pills, ziza kuvunywa ukuba ibhokisana yazo "ifanele i Pontii enesheleni."

I PILLS zika BITSHIM, zitatwe ngemigaqo emiselweyo, zibehle ziwapilise nge amankazana, Azedendi ukupilisa inqo nizimba.

Kwi Sisu esi Butataka; Nokungatandi Kutya; Nesibindi Esingapilileyo: zisebenza ngobugqi idosi ezimbalwa zetiza impiliso engummangaliso kwanamalungu Ayinqobo Emntwini; Zomeleza imisipa; zibuyisa intlaha yomntu obesekudala yatusabayo; zenza ukuba ubani abuye akutande bukali ukutya, zivuselela BONKE UBHLE BE MPIO NENKUTALO YONZIMBA Womntu, ezi Pilisi zidume ngokukodwa ekupiliseui Icesina kmnazwe ashushu. Ezi " zinyaniso " ezivunywa yinyambalala yabantu, kuzo zonke indidi zabantu, obunye ubungqina obupeleleyo ngobutataka bobu bokuba i *Pilisi zika Bilshim lelona yeza litengwayo ngapezu kwawo onke akoyo apa emhlabeni.* Incazo ezeleyo ebhokisaneni nganye.

Lenziwa ngu THOMAS BEECHAM kupela, e St. Helens, Lancashire, England.

Litengiswa ngabapitikevi bamayeza bonke ezi Kolonini.

## THOMAS BAILEY & CO., ABALUNGISELELI BENTO YONKE QUEENSTOWN

BANOKU kwanekela nantonina ongayibizayo ngawona manani apantsi anokufunyanwa apa Emzantsi-Afrika.

Kaniwaqwalasele amanani etu; nize nize kubona Impahla Engummangaliso ukulunga etengiswa ngalomanani.

Ezamadoda. Izihlangu Ezimitya-mide Ezomeleleyo.

6 6, 7/-, 8 6, 9/-

Ezamadoda Izihlangu Ezimityami futshani Ezomeleleyo.

5/-, 6/6, 7/6, 8/6

Ezamadoda i Felskuni Ezomeleleyo.

5/6, 7/6, 8/6

Ezamankazana Ezomaleleyo Zotwatwa.

5/-, 6/6, 7/6

Ezamankazana Ezimitya-Mide.

4/6, 5/-, 5/6

Ezamadoda Ibhulukwe Zezitofu (Tweed), 5/-, 6/11, 8/6 Ezamadoda Isuti Zesitofu.

ziqalela kwi 16/6

Ezamadoda Ihempe Ezilushica, ziqalela kwi 9d, ziyi 4/6 Ezamadoda

Namakwenkwana Ikep, ziqalela 6 ½ d, de kuye 3/3

IMINQWAZI YAMADODA, IKAUSI, IKOLALA, INGXOWA ZABAHAMBI,  
INGXOWANA EZINTLE, NJALO-NJALO.

Iponti ekutengwe ngayo kwesetu isitora, itabata isituba seponti enesihlanu etenge kwezinye ivenkile.

### THOS. BAILEY & CO., WEST END, E-KOMANI

### PEACOCK BROS. NO WEIR, EKOMANI.

NGABATENGI abakulu Bokutya, benika awona

Manani alungileyo. E Komani apa wakuke uyekuva into abayi kupayo pambi kobuba utengise nokuba kupina.

Ihabile, Ezinkozo, Inqholowa, Irasi,

Imbotyi, I-ertyis, Umbona,

Amazimba. bahlele benawo.

### JOHN LUMSDEN & CO., E GCUWA, TRANSKEI.

BAZISA Umzi Ontsundu okulo lonke ela Pe-sheya kwe Nciba okokuba BAZIKETELA NGOKWABO IMPAPHLA yentlobo ntlobo zonke e SKOTILANE, engalungela imfuneko zomzi; nokokuba baya kuzingisa ukunikela

*Abantsundu Abatenga nge Mali,*

into ezifanele ixabiso layo.

### BAVAVANYENI! NIBALINGE!

### BON MARCHE

JOHN W. BAYES & CO., GHAMSTOWN.

IFANDESI LEMPAHLA KUMASEBE ONKE.

I Blanket zamabala ziqalela kwi 1s. 7 ½ d., Amabhayi abubanzi bupindiweyo 11 ½ d., Imiqulu Eqaqambileyo yokwenza ilokwe iqalelakwi 1 ¾ d. nge yadi, I 'Tweed' eziqaqambileyo zelokwe ziqalela kwi 3 ¾ d. nge yadi, I Flannelles 2 ¾ d. nge yadi, Ezona zilungileyo i Printi zama Jamani nama Bhulu 6 ½ d. nge yadi, Iyali zoboya ezona Fishini zintsba ziqalela kwi 3s. kudo kube nga 30s. inye, I Quilts zamabala ziqala 1s. 11 ½ d., I Quilts ezimhlope ziqala 2s. 11d., Amakulu amahlana e " knitted skirts " 1s. 2d. inye.

Zonke impahla zibhalwe ngamanani acacileyo. Akuko nkohliso. Kwisebe le lokwe (Drapery) ngexesha le Fandee i 1s. ebifudula isapulwa nge xabiso le ponti iyakuyeywa

Isebe Lezinxibo lakwa BON MARCHE:

400 ibhulukwe zamadoda (Bedford Cord) ziqala kwi 4s. 11d. inye, I Suti zamadoda ze Tweed 21s. inye, I Felt Hats ezimapiko abanzi 2s. umnye, Ibhatyi zamadoda ze Tweed ziqala kwi 6s., I Bhulukwe ze Tweed 3s. 6d.

QONDISISANI KAKUHLE—"Wonke ubani otenge izinxibo zexabiso eliyi ponti (£1) uyakwapelelwa isihlani ezi ntatu (3s.)

JOHN W. BAYES & CO., BON MARCHE  
GRAHAMSTOWN, E-RINI



LEMINYAKA I 18



IGQITILEYO,

### SINGENISE KWELILIZWE IBLANKETE

### ZOBOYA EZILUKWE NGOBUGCISA OBU

*BODWA, Igama lazo yi " EXTRA NAVY or MATTROSS "*

Kungeniswe ngabanye intlobontlobo ezifana noluhlobo; esigqibe ke kwelokuba SIZIPAULE i BLANKETE ZONKE ngopawu esilungile na Komkulu ngohlobo lwemifa nekiso le yongamele lenteto.

Ukuba ufuna IBLANKETE YEYENENE, kangelisa kunene ukuba inawona umfanekiso we NGONYAMA kwelinye LAMASONDO ayo.

ZONKE EZI BLANKETE ZIZEZINGATANDATYUZWAYO.

ZONKE EZI BLANKETE ZILUNGILE ZITE GUNGQU

IBLANKETE NGANYE IYAYIVELA IMBOLA.

Kwivenkile enitonga kuzo-ke bizani Iblankete ozinomfanskiso we Ngonyama.

Ziya kubaku kuzo zonke ivenkile za Pesheya kwe Nciba nase zidolopini zonke.

APO ZIPAKULWA KONA KUKO

### PEACOCK BROS, and WEIR, E QONCE.

Ngabo bodwa abanokubhala lomfanekiso we Ngonyama.

### Beauchamp, Booth & Co.

EYONA VENKILE INKULU

NETENGELEYO

KINGWILLIAMSTOWN & QUEENSTOWN.

### ITYALI

### IPRINTI

### ISETINI

### IKELEKO

### ISHITI ZEKOYI

### Impahla Yomtshato Yonke.

### BEAUCHAMP, BOOTH & CO.

E-QONCE, KINGWILLIAMSTOWN

### J. W GARRET & CO.

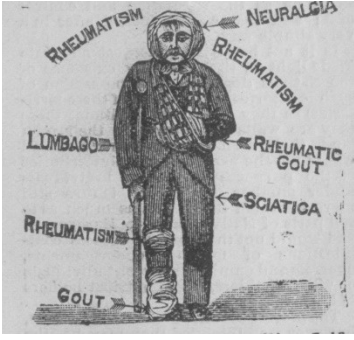
LADY FRERE

IZITORA " EZITSHIPU."





ISEBENZA NGBUGQI. I-RHEUMATICURO! IYEZA ELIKULU LASE SOUTH AFRICA.



Alikaza linqatyelwe ukupilisa izifo Zamatambo. Inqce, ingqaqamba Zentloko. Lingqinwe ngamawaka. Umenzi walo kupelu ngu

J. JONES, Cape Town.

LINOKUTENGWA NAPINA

G. P PERKS NO NYANA E QONCE, YEYONA NDAWO

YOKUTENGA Imisesane yoku "Ngeja," Imisesane Yokutshata, Amacici Namehlo (Spectacles).

KANANJALO XA UFUNA UKUHLAZIYA. IWOTSHI.

MARKET SQUARE, Kingwilliamstown

GREAT AFRICAN

ORSMOND'S

PREPARATIONNS

The GREAT AFRICAN REMEDY.

THE STANDARD DOMESTIC MEDICINE FOR FEVER & AND COMPLAINTS OF THE HOME Pamphlet.

THE GREAT AFRICAN

For Eczema, Eruptions, Bera, Syphilitic and Scrofulous

DISEASE BLOOD

Unrivalled Tonic for FEMALES. Specific for Kidney and Urinary Disorder.

PURIFIER.

FOR

COLIC, DIARRHEA, DYSENTERY

GREAT AFRICAN FRUIT PILLS.

For Liver, Stomach and Bowel The Cure for Piles and Constipation. Are Mild and Effective.

THE GREAT AFRICAN HERBAL OINTMENT.

For New and Old Sore, Skin Disease, Piles, Rheumatism, Sprain. Pains in Joints and Muscle. Inflammatory Swelling

MEDICAL HALL

KING WILLIAM'S TOWN.

J. NEWING.

Umenzi Wempahla

(Ekoneni ye Maclean Square) E QONCE

UFUMANA IMPAHLA EZIPUMA NQO KUBENZI BAZO.

Impahla ze Tweed Zamanene. Impahla Zamadoda Zekodi neze Krikete. Intlobo ezintle kunene ze Printi Nemichako ye Lokwe. Impahla Yokwaka yentlobo zonke, Ikofo ne Swekile, njalo-njalo. Yonke into intsha, ilungile, itshipu—Yizani kubona

Imveliso yomhlaba itengwa nge Cash ngamanani apakamileyo e Malike. Gmsfr18109 5msfr18109

A. J. Cross & Co.,

KING WILLIAMSTOWN

Esitsha Isaziso sika TIKOLOSHE. Kubaxhasi Abantsundu!

A. J. Cross & Co.

Banga bangazisa Abahlobo babo Abamnyama kubo bonke isi Qingata sase Qonce, e Nggushwa, nakwezinye eziraulayo ukuba Base kwi Sitora Sabo Kwigumbi le Marik. Basaligcinile igama labo lokuba batengisa ngamaxabiso angapantsi kwawazo zonke ivenkile

APA E QONCE.

IPULUWA, ISALI, IHEMPE IBHULUKWE, IBHATYI, INGUBO NEZAMANKAZANA.

Umgubo, Ikofo, Ili, Iswekile—ngazwinye Into yonke etywayo.

Basanika awona maxabiso nge NGQOLOWA, UMBONA, nezinye intlobo zbkutyu.

A. J. Cross & Co.

U

P. S. JEFFREY,

UNGA angabulela abatenga Erenkileni zake ngobubele bokumxhasa kwixesha eligqityileyo. Unqwenela ukwazisa

Umzi ose' Kamastone nase Hewu

Ukuba ivenkile zake ezise

Kamastone, Didianna nase Donnybrook.

Zizele ngokn Yimpahla

YALO MCHEBO.

UVITENGISA NGAGQITSELELO NGOBUPANTSI WONA AMANANI E ENGE NGENEMALI UMNTU.

Eziketiweyo zona Ibhulukwe Zamadoda—ezivulekileyo ezantsi. Izihlangu zamadoda ezizitende zide Izitofu—intlobo ezintsha. Ityali Ezibuhlungu Zoboya—zamazakana. Intlobo ze Printi.

Yonke into etengiswa ngabantu itengwa ngemali, ngamaxabiso anokuf unyanwa nani.

Uboya Begusha ne bokwe bufuneka mu.

ZONKE IZIKWELITI ZALOMCEBO KUFUNKA ZIHLALUWE PAMBI KOKUPELA KWALO NYAKA, okanye ziya kunikelwa kubaqni.

Amayeza ka Cook Abantsundu.

UMZI ontsundu ucelelwa ukuba ukangelise lamayeza abalulekileyo.

Elika Iyeza Lesisu Nokuzazana.

Elika Iyeza Lukokohlela (Lingamafuta).

Elika Iyeza Lepalo.

Elika Iyeza Lepalo.

Elika Iyeza Lepalo.

Elika Iyeza Lepalo.

Elika Iyeza Lepalo.

Elika Iyeza Lepalo.

Elika Iyeza Lepalo.

Elika Iyeza Lepalo.

Elika Iyeza Lepalo.

Elika Iyeza Lepalo.

Elika Iyeza Lepalo.

Elika Iyeza Lepalo.

Elika Iyeza Lepalo.

Elika Iyeza Lepalo.

Elika Iyeza Lepalo.

Elika Iyeza Lepalo.

Elika Iyeza Lepalo.

Elika Iyeza Lepalo.

Elika Iyeza Lepalo.

Elika Iyeza Lepalo.

Elika Iyeza Lepalo.

Elika Iyeza Lepalo.

Elika Iyeza Lepalo.

Elika Iyeza Lepalo.

Elika Iyeza Lepalo.

Elika Iyeza Lepalo.

Elika Iyeza Lepalo.

Elika Iyeza Lepalo.

Elika Iyeza Lepalo.

Elika Iyeza Lepalo.

Elika Iyeza Lepalo.

Elika Iyeza Lepalo.

Elika Iyeza Lepalo.

Elika Iyeza Lepalo.

Elika Iyeza Lepalo.

Elika Iyeza Lepalo.

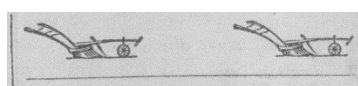
Elika Iyeza Lepalo.

Elika Iyeza Lepalo.

Elika Iyeza Lepalo.

Elika Iyeza Lepalo.

Elika Iyeza Lepalo.



KWAZISWA UMZI OMELE I CALA

UKUBA Ivenkile ebihanjiswa ngu MR. JOHN WILSON, isezandleni ngoku zo WM. SAVAGE ASONS

Abazimisele ukuwuquba umsebenzi NGOHLOBO OLUPEZULU; kunjalonje IZAKWANDISWA KWINTO E-BIYIYO.

ISEBE LAMAQABA LAHLUKILE KANYE KWELABE

SIKOLO.

tyali, I Printi, Ingubo zokuvata—Yinto eninzi.

I-BLANKETE, AMAFELANE, AMABHAI NEZIBHALALA.

Sinegama elidumileyo kuyo yonke i Transkei nge Blankete zetu kwane Zibhalala.

IMPAHLA YOKUTSHATA:

Elisebe lipantsi kokulaula kuka Mr. BATTERSHILL wetu onamava amakulu ngeyona nto kanye ifunekayo kwabalungiselela Imitshato. Ngoko imicimbi epatiswe yena iyakwanelisa kanye.

INGUBO ZAMADODA:

Intlobo zonke zezitofu, ne Twidi, Ibhathyi, Ibhulukwe—ngazwinye into yonke angayifunayo umntu.

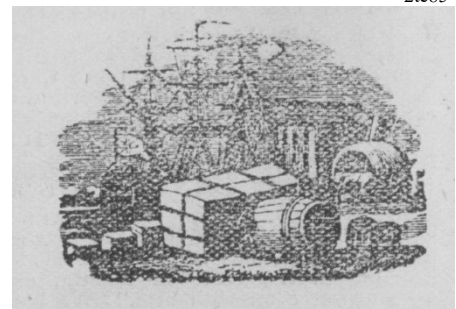
W. SAVAGE & Sons.

JESSE S. HONEY,

IARENTE NOMFANDESI,

Umxabiso Wakomkulu,

MACLEAR.



Uboya! Uboya!

U KATA!

SISANDULUKUFU-MANA i odolo evela e Ngilani ukuba Sitenge bonke

UBOYA BE NETEVU.

Zisani uboya ke nibone ukuba asirolu awona manani afaneleyona.

W. O. CARTER & CO.,

MACLEAN SQUARE, KING WILLIAMS TOWN.

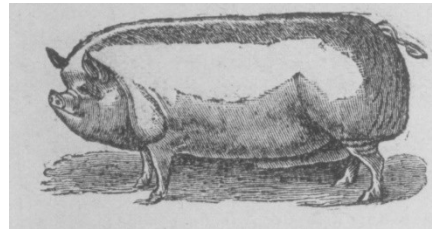
Umboniso Wezilimo

WASE GLEN GREY

UYAKUBA NGOMHLA WE

11 Ku APRIL, 1894

A. H. OSLER, Unobhala no Mgcini. Ndyebu.



KWABAKUFUPI NABAKUDE (Ngokukodwa AMA TRANSPORT)

IMIXESHO YENYAMA

- NE ZONKA, NINOKUYIFUMANA KO

Smith & Gregg,

UMELENE NAMAGQUBA APAKATI

CAMBRIDGE ROAD,

KING WILLIAMS TOWN.

J. LAMONT.

NKATULA! NKATULA!

QUEENSTOWN.

UKUPELA kwevenkile e Komani apo amafama anokuzifumana zonke izinto azifunayo.

U J. L.

Unga angacela amehlo ecelela imfumba anazo ze Tyali, Blankete, Izibhalala, Ingubo Zamadoda, Ihempe, Printi, Izihlangu, Tsali, I—ngazwinye yonke into enokulungaziselwa ngumzi ontsundu. ngamaxabiso angazanga awive ngapambili e Queenstown.

Ukuze uyinikane nawe into esiyenzayo elizekileyo kubu 75 Eagle litengiswa nge 30/; Imokolelwana yokutsala, yenkabi 10, 10/; Iswekile elungileyo embuthi 30/ nge 100lbs; Ikofo 1/ ngeponti.

Kwakona unemfumba yengubo ezinogonsha, zonke ngamaxabiso abaluleko ngobupantsi. Lilo eli ixesha labahlolo betu bangapandle ukuba batenge.

IMVELISO.

Awona manani apenzulwa anokufunyanwa ngo Boya, Izikumba, Imfela, ukudla, njalo njalo, njalo njalo.

J. LAMONT,

Kwi Boloro yakwa Komani, (QUEENSTOWN).

“UMGUBO KA KEATING.”

“UMGUBO KA KEATING.”

“UMGUBO KA KEATING.”

“UMGUBO KA KEATING.”

“UMGUBO KA KEATING.”

“UMGUBO KA KEATING.”

“UMGUBO KA KEATING.”

“UMGUBO KA KEATING.”

“UMGUBO KA KEATING.”

“UMGUBO KA KEATING.”

“UMGUBO KA KEATING.”

“UMGUBO KA KEATING.”

“UMGUBO KA KEATING.”

“UMGUBO KA KEATING.”

“UMGUBO KA KEATING.”

“UMGUBO KA KEATING.”

“UMGUBO KA KEATING.”

“UMGUBO KA KEATING.”

“UMGUBO KA KEATING.”

“UMGUBO KA KEATING.”

“UMGUBO KA KEATING.”

“UMGUBO KA KEATING.”

“UMGUBO KA KEATING.”

“UMGUBO KA KEATING.”

“UMGUBO KA KEATING.”

“UMGUBO KA KEATING.”

“UMGUBO KA KEATING.”

“UMGUBO KA KEATING.”

“UMGUBO KA KEATING.”

“UMGUBO KA KEATING.”

“UMGUBO KA KEATING.”

“UMGUBO KA KEATING.”

“UMGUBO KA KEATING.”

“UMGUBO KA KEATING.”

“UMGUBO KA KEATING.”

“UMGUBO KA KEATING.”

“UMGUBO KA KEATING.”

“UMGUBO KA KEATING.”

“UMGUBO KA KEATING.”

“UMGUBO KA KEATING.”

“UMGUBO KA KEATING.”

“UMGUBO KA KEATING.”

“UMGUBO KA KEATING.”

“UMGUBO KA KEATING.”

“UMGUBO KA KEATING.”

“UMGUBO KA KEATING.”

“UMGUBO KA KEATING.”

“UMGUBO KA KEATING.”

“UMGUBO KA KEATING.”

“UMGUBO KA KEATING.”

“UMGUBO KA KEATING.”

“UMGUBO KA KEATING.”

“UMGUBO KA KEATING.”

“UMGUBO KA KEATING.”

“UMGUBO KA KEATING.”

“UMGUBO KA KEATING.”

“UMGUBO KA KEATING.”

“UMGUBO KA KEATING.”

“UMGUBO KA KEATING.”

“UMGUBO KA KEATING.”

IZAZISO ZAKOMKULU.



ZISHICILELWA 'NGE' 'GUNYA. ISAZISO SAKOMKULU.—No. 20, 1891.

Kwi Ofisi ka Nocanda, E Kapa. 15 January, 1894.

NGEMISELO ye Sigundu II, Umntu No. 15 ka 1887, kuyaziswa ngokubanzi ukuba lemhlaba ilandelayo yakwa Rulumeni, ekwi Sizingata sase Matatiele iya kutengiswa efandisini eliya kuba pambi kwe Ofisi ye Mantyi e MATATIELE, ngo 10 o'clock a.m. kusasa, ngolwesi NE, 26 APRIL, 1891, pantsi kwemigalaselelo nemiqondo yo Mteto ongentla, nangezimi-selo zelifandisi ezibulweyo, nengati zixelwe ngalomni yefandisi.

Isiziba ngasinye siya kutengiswa ngemali esixhonywe ngayo, waye othe wabida ngapezu kwabanye, kanye ngemali enge ngapantsi koxhonywe ngayo, eyakuba ngo. wutengileyo, umtengi ke lowokoba kokwaka ukuyihlala yonke ngaxanye nokuba yinxalenye yayo ngalomhla we Fandesi. Ekoti ke

(i) Kungelo ntlalo ngalomhla wefandisi isahlulo seshumi sirohlwe ngenyanga ezintandatu, ize esinye isahlu' seshumi sirohlwe kwinyanga ezilishami linambini ezilandela umhla wefandisi.

(ii) Ukuba imali chululwe ngomhla we fandisi ingapantsi kwesahlulo seshumi isisalela sesahlulo seshumi sohlulwa ukupeleni kwenyanga ezintandatu, ize isahlulo seshumi esisalelelo sirohlwe kwinyanga ezilishami linambini kusalelela kumhla we fandisi.

(iii) Ukuba imali chululwe ngomhla we fandisi ipakati kwesahlulo seshumi nesahlulo seshulu ehlulwe kwinyanga ezilishami linambini emva kwelandela celo.

Inzala zeyentlobo yoba ziponti zone ekalwini ngonyaka; ekoti ukuhlulwa kwayo nenzala eyo kuniqesilwe ngabemali zekileyo ababini ngokwaneliseka ko Mantyi —abemali abofika bazibonelele kanye nangabanye ukuba ngabo abanetyala, bengena kuzilandalela nangantoni.

Indleko zocanda, njalonjalo, netatitile (12/6) zohlalwa ku Mantyi, nakubani onguwumbi owonikwa igunya loko kwangalomhla wefandesi.

Unotenga lowo wofika abhale umngqiso ngezahluho ezine nezibhali eyuma ukuba wohlulwa inzala—eziponti ezine ngekulu, angati ukuba wayerole ngomhla wefandisi ngapezulu kwesahlulo sesihlalu, aselewe-nzela umngqiso isisalela samali yentengo leyo. Unotenga woba nelungelo lokuhlala lomni yenke mhlambi isahlulo semali yalo-mngqiso, kungangapantsi kwamashumi omahlano eponi.

Umfanekiso walemhlaba, kwakunye ne zimisele zefandisi, zingabonwa kwi ofisi yo Nocanda e Kapa, nakwi ofisi yo Mantyi e Matatiele.

J. TEMPLER EORNE,

Unocanda Omkulu.

EMBO.

Isiqingata sase Matatiele.

Lot No 7546, isiziba somhlaba esikwisiqingata sase Matatiele, ekutiwa yi Glenleary, nbukulu 803 imokolo 18 square rods. Ngasentla upele ngodonga olungapakati lomlambe oli Tyinira, ngacezantzi entehonala ngelali yabantsundu, ngase mpumalanga nge Drummondelliot, ngasentla entshonalanga nge Standford, Inani oxhonywe ngalo £510. Indleko zocanda, njalo njalo, £16 10/7; itaitile 12/6.

Lot No 7517, oyi George herbert, ubukulu zimokolo ezi 990; ngasentla empumalanga upele nge Etheldale, ngezantsi entshonalanga ngodonga olungapakati lwe Tyinira, ngezantsi empumalanga nge Harryebden, ngentla entshonalanga ngelali yabantsundu. Ukhonywe nge £175; indleko zocanda njalo njalo, £18 19/9; itaitile 12/3.

Lot No 7548, oyi Drummondelliot, ubukulu 1079 imokolo, ngasentla upele ngodonga olungapakati lwe Tyinira, ngezantsi ngelali yabantsundu, empumalanga nge Polygon, ngase ntshonalanga yi Glenleary. Ukhonywe nge £475; indleko zocanda njalo njalo £20 5/6, itaitile 12/3.

Lot No 7549 oyi Polygon, ubukulu 1115 imokolo, ngasentla upele ngodonga olungapakati lwe Tyinira, ngezantsi entshonalanga nge Drummondelliot, ngasentla empumalanga ngelali yabantsundu ne Simpson, ngase ntshonalanga lidlelo lase Matatiele. Ukhonywe nge £710; indleko zocanda njalo njalo £27 17/7, itaitile 12/3.

Lot No 7554, oyi Donald, ubukulu 1011 imokolo; ngasentla entshonalanga upele nge Wallace, ngezantsi entshonalanga nge Martinfield, nodonga olungapakati lwe Tyinira. Ukhonywe nge £710; indleko zocanda njalo njalo £30 12/