

DYER AND DYER

(LIMITED.)

KING WILLIAMSTOWN,

Impahla Entsha Yasehlotyeni.

Isuti Ezintsha ze Twidi ziqala kwi 16/6.

Isuti Ezintsha ze Diagonal Tweed Emnyama ziqala 25/.

Isuti Ezintsha ze Blue Serge ziqala kwi 25/.

Iminqwazi Emitsha, Ihempe, Izitadi, Izihlangu, Amaqhina, njalo-njalo.

Ibhulukwe Zamadoda Zekodi ziqala kwi 4 6.

Ihempe Zamadoda Zokusebenza ziqala kwi 1/ inyo.

I Flanellette Zamadoda ziqala kwi 1/3 inye.

Ngokubalulekileyo—Ibhulukwe Ezilungileyo Zamadoda ze Whipcord 6/6.

Ibhatyi Ezilungileyo Zamadoda ze Whipcord 10 '6.

Impahla ye Kriketi ne Tennis,

ISANDULUKUFIKA :

IBHATI ne BALLS, IZITAMPU, I-LEG GUARDS, I-GLOVES—zokudlala nozokunqanda emva kwe Wikiti. I RACQUETS ze TENNIS, IBHOLA, i NETI, njalo-njalo, yonke into efunekayo.

AMAXABISO AHLISIWEYO KWI CLUBS.

Eyona igqitiseleyo neyona itshipu kuzo zonke ngempahla eyenziwe Ngabasiki, ne Mpahla Zabafundisi, njalo-njalo. .

DYER NO DYER,

EQONCE.

ITUBA LOKWENZA IMALI.

Zisani bonke UBOYA benu

Zisani bonke UBOYA BEBHOKWE

Zisani wonke UMBONA wenu

Zisani onke AMAZIMBA enu

Zisani yonke INGQOLOWA yenu

Zisani yonke IHABILE yenu.

Nayo yonke enye imveliso eninayo naniya kufumana amanani Apa amileyo e Cash ngayo—YIZANI KUBEKANYE naniya kuhlala nisiza ko

JAMES HODGES and CO.

QUEENSTOWN

Iyeza Elingummangaliso.

BEECHAM'S PILLS

Zikulungele Ukuqunjelwa nezinye intlungu, ezinjle ngo Moya ne Ntlungu e Siswini, Intloko Ebulalayo, Ukuba nasi Yesi, Intluta nokuqunjelwa emva Kokutya, Ukupitizela kwe Ntloko, Nobundongela, Ukuqazazela Yingqele, Imfudumalo Zobushushu, Umnqumi, Ukupefumla Okuqapayo (Ipika), Ukungayi Ngasese, Ukujaduka Komzimba, Ukungalali Kamnandi, Amapupa Awoyikekayo, nako konke Ukungangcazela, njalo njalo. Idosi yo- KUQALA INOKUNCEDA KWISITUBA SEMIZUZU ENGAMASHUMI MABINI. Asintsomi lonto. Utulwelwe ngamnye ucalwa ukuba utate ibhokisana yezi Pills, ziya kuvunywa ukuba ibhokisana yazo "ifanele i Pontii enesheleni."

I PILLS zika BITSHIM, zitatwe ngemigaqo emiselweyo, zibehle ziwapilise ngqo amankazana, Azedendi ukupilisa inqunizimba. Kwi Sisu esi Butataka; Nokungatandi Kutya; Nesibindi Esingapilileyo: zisebenza ngobugqi idosi ezimbalwa zetiza impiliso engummangaliso kwanamalungu Ayinqobo Emntwini; Zomeleza imisipa; zibuyisa intlaha yomntu obesekudala yatusabayo; zenza ukuba ubani abuye akutande bukali ukutya, zivuselela BONKE UBHLE BE MPIO NENKUTALO YONZIMBA Womntu, ezi Pilisi zidume ngokukodwa ekupiliseui lcesina kmazwe ashushu. Ezi " zinyaniso " ezivunywa yinyambalala yabantu, kuzo zonke indidi zabantu, obunye ubungqina obuqeleleyo ngobutataka bobu bokuba i *Pilisi zika Bilshlm lelona yeza litengwayo ngapezu kwawo onke akoyo apa emhlabeni.* Incazo ezeleyo ebhokisane nganye. Lenzwa ngu THOMAS BEECHAM kupela, e St. Helens, Lancashire, England.

Litengiswa ngabapitikevi bamayeza bonke ezi Kolonini.

THOMAS BAILEY & CO., ABALUNGISELELI BENTO YONKE QUEENSTOWN

BANOKU kwanekela nantonina ongayibizayo ngawona manani apantsi anokufunyanwa apa Emzantsi-Afrika.

Kaniwaqwalasele amanani etu; nize nize kubona Impahla Engummangaliso ukulunga etengiswa ngalomanani.

Ezamadoda. Izihlangu Ezimitya-mide Ezomeleleyo.

6 6, 7/-, 8 6, 9/-

Ezamadoda Izihlangu Ezimityami futshani Ezomeleleyo.

5/-, 6/6, 7/6, 8/6

Ezamadoda i Felskuni Ezomeleleyo.

5/6, 7/6, 8/6

Ezamankazana Ezomeleleyo Zotwatwa.

5/-, 6/6, 7/6

Ezamankazana Ezimitya-Mide.

4/6, 5/-, 5/6

Ezamadoda Ibhulukwe Zezitofu (Tweed), 5/-, 6/11, 8/6 Ezamadoda Isuti Zezitofu.

ziqalela kwi 16/6

Ezamadoda Ihempe Ezilushica, ziqalela kwi 9d, ziyo 4/6 Ezamadoda Namakwenkwana Ikep, ziqalela 6 ½ d, de kuye 3/3

IMINQWAZI YAMADODA, IKAUSI, IKOLALA, INGXOWA ZABAHAMBI, INGXOWANA EZINTLE, NJALO-NJALO.

Iponti ekutengwe ngayo kwesetu isitora, itabata isituba seponti enesihlanu etenge kwezinye ivenkile.

THOS. BAILEY & CO., WEST END, E-KOMANI

PEACOCK BROS. NO WEIR, EKOMANI.

NGABATENGI abakulu Bokutya, benika awona

Manani alungileyo. E Komani apa wakuke uyekuva into abayi kupayo pambi kobuba utengise nokuba kupina.

Ihabile, Ezinkozo, Inqholowa, Irasi,

Imbotyi, I-ertyis, Umbona,

Amazimba. bahlele benawo.

JOHN LUMSDEN & CO., E GCUWA, TRANSKEI.

BAZISA Umzi Ontsundu okulo lonke ela Pe-sheya kwe Nciba okokuba BAZIKETELA NGOKWABO IMPAHLA yentlobo ntlobo zonke e SKOTILANE, engalungela imfuneko zomzi; nokokuba baya kuzingisa ukunikela

Abantsundu Abatenga nge Mali,

into ezifanele ixabiso layo.

BAVAVANYENI! NIBALINGE!

BON MARCHE

JOHN W. BAYES & CO., GRAHAMSTOWN.

IFANDESI LEMPAHLA KUMASEBE ONKE.

I Blanket zamabala ziqalela kwi 1s. 7 ½ d., Amabhayi abubanzi bupindiweyo 11 ½ d., Imiqulu Eqaqambileyo yokwenza ilokwe iqalelakwi 1 ¾ d. nge yadi, I 'Tweed' eziqaqambileyo zelokwe ziqalela kwi 3 ¾ d. nge yadi, I Flannellettes 2 ½ d. nge yadi, Ezona zilungileyo i Printi zama Jamani nama Bhulu 6 ½ d. nge yadi, Iyali zoboya ezona Fishini zintsba ziqalela kwi 3s. kudo kube nga 30s. inye, I Quilts zamabala ziqala 1s. 11 ½ d., I Quilts ezimhlope ziqala 2s. 11d., Amakulu amahlana e " knitted skirts " 1s. 2d. inye.

Zonke impahla zibhalwe ngamanani acacileyo. Akuko nkohliso. Kwisebe le lokwe (Drapery) ngexesha le Fandee i 1s. ebifudula isapulwa nge xabiso le ponti iyakuyeywa

Isebe Lezinxibo lakwa BON MARCHE:

400 ibhulukwe zamadoda (Bedford Cord) ziqala kwi 4s. 11d. inye, I Suti zamadoda ze Tweed 21s. inye, I Felt Hats ezimapiko abanzi 2s. umnye, Ibhatyi zamadoda ze Tweed ziqala kwi 6s., I Bhulukwe ze Tweed 3s. 6d.

QONDISISANI KAKUHLE—"Wonke ubani otenge izinxibo zexabiso eliyi ponti (E1) uyakwapelelwa isihlani ezi ntatu (3s.)

JOHN W. BAYES & CO., BON MARCHE
GRAHAMSTOWN, E-RINI



LEMINYAKA I 18



IGQITILEYO,

SINGENISE KWELILIZWE IBLANKETE

ZOBOYA EZILUKWE NGOBUGCISA OBU

BODWA, Igama lazo yi " EXTRA NAVY or MATTROSS "

Kungeniswe ngabanye intlobontlobo ezifana noluhlobo; esigqibe ke kwelokuba SIZIPAULE i BLANKETE ZONKE ngopawu esiluqinisele na Komkulu ngohlobo lwemifa nekiso le yongamele lenteto.

Ukuba ufuna IBLANKETE YEYENENE, kangelisa kunene ukuba inawona umfanekiso we NGONYAMA kwelinye LAMASONDO ayo.

ZONKE EZI BLANKETE ZIZEZINGATANDATYUZWAYO.

ZONKE EZI BLANKETE ZILUNGILE ZITE GUNGQU

IBLANKETE NGANYE IYAYIVELA IMBOLA.

Kwivenkile enitonga kuzo-ke bizani Iblankete ozinomfanskiso we Ngonyama.

Ziya kubaku kuzo zonke ivenkile za Pesheya kwe Nciba nase zidolopini zonke.

APO ZIPAKULWA KONA KUKO

PEACOCK BROS, and WEIR, E QONCE.

Ngabo bodwa abanokubhala lomfanekiso we Ngonyama.

Beauchamp, Booth & Co.

EYON AVENKILE INKULU

NETENGELAYO

KINGWILLIAMSTOWN & QUEENSTOWN.

ITYALI

IPRINTI

ISETINI

IKELEKO

ISHITI ZEKOYI

Impahla Yomtshato Yonke.

BEAUCHAMP, BOOTH & CO.

E-QONCE, KINGWILLIAMSTOWN

J. W GARRET & CO.

LADY FRERE

IZITORA " EZITSHIPU. "

Ingubo Zamaledi, Iswokile Nekofu, nento zalowomkondo Izihlangu Ingubo Zamadoda, Isali nempahla

PASCOE, (U FOLOKOCO)

UKE wayibonana IMPAHLA YAKE YOMTSHATO?

Ibhulukwe (ezisikiweyo), Ibhaty (eziyi Salvation zona), Ibhaty (ezimfutshane) Nendulubhatyi.

Ingubo Zabafundisi, Isuti zenziwa njengomyalelo, Imisesane Yomtshato neye Ngeji (intlobo ngentlobo), Ibhutsi ne Shuzi (ezikalayo nezingakaliyo).

Ilokwe Zomtshato zenziwa kakuhle yi Dresmeka ye Ngesikazi. Odola Ilokwe yako ngexesha le Bhulakufesi uya kugoduka nayo uyipete ukutshona kwelanga

Imela Nefolokwe, ne Mpahla Yokupeka,— Itshipu Ngokungummangaliso.

Ningalibali ukuya apo niya kumbona kona ngokwake (Saluf) e

QONCE, EMONTI nase CALA, U-FOLOKOCO.

AFRICAN AND AMERICAN WORKING MEN'S UNION.

ISAZISO KUBA-BAMBI-ZAHLULO.

INTLANGANISO yaba Bambi Zahlulo yonyaka iyakuba e Port Eliza beth esikolweni sase Wesile, ngolwesi BINI, 27 MARCH, 1894

iya kuqala ngo 7 30 p.m. kanye.

Yenzelwa ukwamkela ingxelo yaba Pati, kwanohlobo ezimi ngalo imali kuse kusuku lwe 31st December ogqileyo.

Kwangeloxesha kuleyo ntlanganiso aba Bambi-Zahlulo baya kunyula aba Pati babe babini esikundleni so Messrs. EBENEZER MARELA no NISINI MBAMBANI abashenxayo ngokulandelanu kwabo ekunylweni baye benokubuye banyulwe kanjalo.

GEO. A. ROSS, Secretary.

23rd February, 1894. t283

GIBBERD & BRYANT, KING WILLIAMS TOWN.

I-PRINTI. EZINTSHA, 3d., 4d, 6d., 6d , 7 ½ d., 9d.

GIBBERD AND BRYANT, KING WILLIAMS TOWN.

Amayeza ka Cook Abantsundu.

UMZI ontsundu ucelelwa ukuba ukangelise lamayeza abalulekileyo.

COOK Elika Iyeza Lesisu Nokuxaxazo. 1/6 ibotile.

COOK Elika Iyeza Lukokohlela (Lingamafuta). 1/6 ibotile.

COOK Aka Amafuta Ezilonda Nokwekwe. 9d. ibotile

COOK Elika Iyeza Lepalo. 1/6 ibotile.

COOK Ezika Ijips. 1/ ngebokisana.

COOK Eka Incindi Yezinyo. 6d. ngebotile.

COOK Oka Umciza Westepu Sabantwana. 6d. ngebotile.

COOK Umgutyana Wamehlo. 6d. ngesiqnyana Oka

COOK Umciza we Cesine, 0/6.

Niqondise ukuba igama ngu

G E. COOK, Chemist, E QONCE.

Ngawenkohliso angenalo igamalake.

Owatengisayo e Mount Erere, kwa Baca, J. J. YATES, " Umatendela."

P. S. JEFFREY,

UNGA angabulela abatanga Evenkileni zake ngobubele bokutxhasa kwixesha eligqileyo. Ungwenela ukwazisa

Umzi ose Kamastone nase Hewu

Ukuba ivenkile zake ezise Kamastone, Didimana nase Donnybrook.

Zizele ngoku Yimpahla

YALO MCHEBONO.

UYITENGISA NGAQOSHELEYO NGOBUPANTSI WONA AMANANI E ENGE NGEMLALI UMNTU.

Ezikitiweyo zona Ibhulukwe ZaMadoda ezivulekileyo ezantsi. Izihlangu zamadoda ezizitende zide Izitofu—intlobo ezintsha.

Ityali Ezibuhlungu Zoboya-zamankazana. Intlobo ze Printi.

Yonke into eteNgiswa ngabantu itengwa ngemall NgamxabiSo anokufunyanwa napi.

Uboya Begusha nobebhokwe butineka mu.

ZONKE IZIKWEMTI ZALOMCEBO kufu NEKA ZIHLAULWE PAMBI KOKUPELA KWALO NYAKA, okanye ziya kunikelwa kubaquki.

Umboniso Wezilimo

WASE GLEN GREY

UYAKUBA NGOMHLA WE 11 Ku APRIL, 1894.

—THE— A H. OSLER, UnobHala no Mgcini-Ndyebo,

Secretary and Treasurer.

A. J. Cross & Co.,

KING WILLIAMSTOWN

Esitsha Isaziso sika Tikoloshe

Kubaxhasi Abantsundu

O. A. J. Cross & Co.

Banga bangazisa Abahlobo babo Abamnyama kuso sonke isi Qingata sase Qonce, e Ngqushwa, nakwezinye eziraulayo ukuba Base kwi Sitora

Sabo Kwigumbi le Marike. Bisaligcincile igama labo lokuba batengisa ngamaxabiso angapantsi kwawazo zonke ivenkile

APA E QONCE.

IPULUWA, ISALL, IHEMPE IBHULUKWE, IBHATYI, INGUBO NEZAMANKAZANA.

Umgubo, Ikofu, Iti, Iswekile—ngazwinye Into yonke etyiwayo.

Basanika awona maxabiso nge NQOLOWA, UMBONA, nezinye intlobo zokutya.

UMTSHAINA ongu Ah Young ubepambi kwamatyala ase Rautini ngokutata itikiti yodidi Iwesibini ezinqweleni zakwaloliwe kanti ungowebala Ekubeni ecelwe ukuba ayekwezabamnyama akavumanga; ukutshwe kuleyo ngamadoda amabini engavumi. Amatyalala ate lomcimbi ungapandle kwaquo; waba uyasinda ekatsini omalala.

UMTSHAINA ongu Ah Young ubepambi kwamatyala ase Rautini ngokutata itikiti yodidi Iwesibini ezinqweleni zakwaloliwe kanti ungowebala Ekubeni ecelwe ukuba ayekwezabamnyama akavumanga; ukutshwe kuleyo ngamadoda amabini engavumi. Amatyalala ate lomcimbi ungapandle kwaquo; waba uyasinda ekatsini omalala.

UMTSHAINA ongu Ah Young ubepambi kwamatyala ase Rautini ngokutata itikiti yodidi Iwesibini ezinqweleni zakwaloliwe kanti ungowebala Ekubeni ecelwe ukuba ayekwezabamnyama akavumanga; ukutshwe kuleyo ngamadoda amabini engavumi. Amatyalala ate lomcimbi ungapandle kwaquo; waba uyasinda ekatsini omalala.

UMTSHAINA ongu Ah Young ubepambi kwamatyala ase Rautini ngokutata itikiti yodidi Iwesibini ezinqweleni zakwaloliwe kanti ungowebala Ekubeni ecelwe ukuba ayekwezabamnyama akavumanga; ukutshwe kuleyo ngamadoda amabini engavumi. Amatyalala ate lomcimbi ungapandle kwaquo; waba uyasinda ekatsini omalala.

UMTSHAINA ongu Ah Young ubepambi kwamatyala ase Rautini ngokutata itikiti yodidi Iwesibini ezinqweleni zakwaloliwe kanti ungowebala Ekubeni ecelwe ukuba ayekwezabamnyama akavumanga; ukutshwe kuleyo ngamadoda amabini engavumi. Amatyalala ate lomcimbi ungapandle kwaquo; waba uyasinda ekatsini omalala.

UMTSHAINA ongu Ah Young ubepambi kwamatyala ase Rautini ngokutata itikiti yodidi Iwesibini ezinqweleni zakwaloliwe kanti ungowebala Ekubeni ecelwe ukuba ayekwezabamnyama akavumanga; ukutshwe kuleyo ngamadoda amabini engavumi. Amatyalala ate lomcimbi ungapandle kwaquo; waba uyasinda ekatsini omalala.

UMTSHAINA ongu Ah Young ubepambi kwamatyala ase Rautini ngokutata itikiti yodidi Iwesibini ezinqweleni zakwaloliwe kanti ungowebala Ekubeni ecelwe ukuba ayekwezabamnyama akavumanga; ukutshwe kuleyo ngamadoda amabini engavumi. Amatyalala ate lomcimbi ungapandle kwaquo; waba uyasinda ekatsini omalala.

UMTSHAINA ongu Ah Young ubepambi kwamatyala ase Rautini ngokutata itikiti yodidi Iwesibini ezinqweleni zakwaloliwe kanti ungowebala Ekubeni ecelwe ukuba ayekwezabamnyama akavumanga; ukutshwe kuleyo ngamadoda amabini engavumi. Amatyalala ate lomcimbi ungapandle kwaquo; waba uyasinda ekatsini omalala.

UMTSHAINA ongu Ah Young ubepambi kwamatyala ase Rautini ngokutata itikiti yodidi Iwesibini ezinqweleni zakwaloliwe kanti ungowebala Ekubeni ecelwe ukuba ayekwezabamnyama akavumanga; ukutshwe kuleyo ngamadoda amabini engavumi. Amatyalala ate lomcimbi ungapandle kwaquo; waba uyasinda ekatsini omalala.

UMTSHAINA ongu Ah Young ubepambi kwamatyala ase Rautini ngokutata itikiti yodidi Iwesibini ezinqweleni zakwaloliwe kanti ungowebala Ekubeni ecelwe ukuba ayekwezabamnyama akavumanga; ukutshwe kuleyo ngamadoda amabini engavumi. Amatyalala ate lomcimbi ungapandle kwaquo; waba uyasinda ekatsini omalala.

UMTSHAINA ongu Ah Young ubepambi kwamatyala ase Rautini ngokutata itikiti yodidi Iwesibini ezinqweleni zakwaloliwe kanti ungowebala Ekubeni ecelwe ukuba ayekwezabamnyama akavumanga; ukutshwe kuleyo ngamadoda amabini engavumi. Amatyalala ate lomcimbi ungapandle kwaquo; waba uyasinda ekatsini omalala.

UMTSHAINA ongu Ah Young ubepambi kwamatyala ase Rautini ngokutata itikiti yodidi Iwesibini ezinqweleni zakwaloliwe kanti ungowebala Ekubeni ecelwe ukuba ayekwezabamnyama akavumanga; ukutshwe kuleyo ngamadoda amabini engavumi. Amatyalala ate lomcimbi ungapandle kwaquo; waba uyasinda ekatsini omalala.

UMTSHAINA ongu Ah Young ubepambi kwamatyala ase Rautini ngokutata itikiti yodidi Iwesibini ezinqweleni zakwaloliwe kanti ungowebala Ekubeni ecelwe ukuba ayekwezabamnyama akavumanga; ukutshwe kuleyo ngamadoda amabini engavumi. Amatyalala ate lomcimbi ungapandle kwaquo; waba uyasinda ekatsini omalala.

UMTSHAINA ongu Ah Young ubepambi kwamatyala ase Rautini ngokutata itikiti yodidi Iwesibini ezinqweleni zakwaloliwe kanti ungowebala Ekubeni ecelwe ukuba ayekwezabamnyama akavumanga; ukutshwe kuleyo ngamadoda amabini engavumi. Amatyalala ate lomcimbi ungapandle kwaquo; waba uyasinda ekatsini omalala.

UMTSHAINA ongu Ah Young ubepambi kwamatyala ase Rautini ngokutata itikiti yodidi Iwesibini ezinqweleni zakwaloliwe kanti ungowebala Ekubeni ecelwe ukuba ayekwezabamnyama akavumanga; ukutshwe kuleyo ngamadoda amabini engavumi. Amatyalala ate lomcimbi ungapandle kwaquo; waba uyasinda ekatsini omalala.

UMTSHAINA ongu Ah Young ubepambi kwamatyala ase Rautini ngokutata itikiti yodidi Iwesibini ezinqweleni zakwaloliwe kanti ungowebala Ekubeni ecelwe ukuba ayekwezabamnyama akavumanga; ukutshwe kuleyo ngamadoda amabini engavumi. Amatyalala ate lomcimbi ungapandle kwaquo; waba uyasinda ekatsini omalala.

UMTSHAINA ongu Ah Young ubepambi kwamatyala ase Rautini ngokutata itikiti yodidi Iwesibini ezinqweleni zakwaloliwe kanti ungowebala Ekubeni ecelwe ukuba ayekwezabamnyama akavumanga; ukutshwe kuleyo ngamadoda amabini engavumi. Amatyalala ate lomcimbi ungapandle kwaquo; waba uyasinda ekatsini omalala.

UMTSHAINA ongu Ah Young ubepambi kwamatyala ase Rautini ngokutata itikiti yodidi Iwesibini ezinqweleni zakwaloliwe kanti ungowebala Ekubeni ecelwe ukuba ayekwezabamnyama akavumanga; ukutshwe kuleyo ngamadoda amabini engavumi. Amatyalala ate lomcimbi ungapandle kwaquo; waba uyasinda ekatsini omalala.

UMTSHAINA ongu Ah Young ubepambi kwamatyala ase Rautini ngokutata itikiti yodidi Iwesibini ezinqweleni zakwaloliwe kanti ungowebala Ekubeni ecelwe ukuba ayekwezabamnyama akavumanga; ukutshwe kuleyo ngamadoda amabini engavumi. Amatyalala ate lomcimbi ungapandle kwaquo; waba uyasinda ekatsini omalala.

UMTSHAINA ongu Ah Young ubepambi kwamatyala ase Rautini ngokutata itikiti yodidi Iwesibini ezinqweleni zakwaloliwe kanti ungowebala Ekubeni ecelwe ukuba ayekwezabamnyama akavumanga; ukutshwe kuleyo ngamadoda amabini engavumi. Amatyalala ate lomcimbi ungapandle kwaquo; waba uyasinda ekatsini omalala.

UMTSHAINA ongu Ah Young ubepambi kwamatyala ase Rautini ngokutata itikiti yodidi Iwesibini ezinqweleni zakwaloliwe kanti ungowebala Ekubeni ecelwe ukuba ayekwezabamnyama akavumanga; ukutshwe kuleyo ngamadoda amabini engavumi. Amatyalala ate lomcimbi ungapandle kwaquo; waba uyasinda ekatsini omalala.

UMTSHAINA ongu Ah Young ubepambi kwamatyala ase Rautini ngokutata itikiti yodidi Iwesibini ezinqweleni zakwaloliwe kanti ungowebala Ekubeni ecelwe ukuba ayekwezabamnyama akavumanga; ukutshwe kuleyo ngamadoda amabini engavumi. Amatyalala ate lomcimbi ungapandle kwaquo; waba uyasinda ekatsini omalala.

UMTSHAINA ongu Ah Young ubepambi kwamatyala ase Rautini ngokutata itikiti yodidi Iwesibini ezinqweleni zakwaloliwe kanti ungowebala Ekubeni ecelwe ukuba ayekwezabamnyama akavumanga; ukutshwe kuleyo ngamadoda amabini engavumi. Amatyalala ate lomcimbi ungapandle kwaquo; waba uyasinda ekatsini omalala.

UMTSHAINA ongu Ah Young ubepambi kwamatyala ase Rautini ngokutata itikiti yodidi Iwesibini ezinqweleni zakwaloliwe kanti ungowebala Ekubeni ecelwe ukuba ayekwezabamnyama akavumanga; ukutshwe kuleyo ngamadoda amabini engavumi. Amatyalala ate lomcimbi ungapandle kwaquo; waba uyasinda ekatsini omalala.

UMTSHAINA ongu Ah Young ubepambi kwamatyala ase Rautini ngokutata itikiti yodidi Iwesibini ezinqweleni zakwaloliwe kanti ungowebala Ekubeni ecelwe ukuba ayekwezabamnyama akavumanga; ukutshwe kuleyo ngamadoda amabini engavumi. Amatyalala ate lomcimbi ungapandle kwaquo; waba uyasinda ekatsini omalala.

UMTSHAINA ongu Ah Young ubepambi kwamatyala ase Rautini ngokutata itikiti yodidi Iwesibini ezinqweleni zakwaloliwe kanti ungowebala Ekubeni ecelwe ukuba ayekwezabamnyama akavumanga; ukutshwe kuleyo ngamadoda amabini engavumi. Amatyalala ate lomcimbi ungapandle kwaquo; waba uyasinda ekatsini omalala.

UMTSHAINA ongu Ah Young ubepambi kwamatyala ase Rautini ngokutata itikiti yodidi Iwesibini ezinqweleni zakwaloliwe kanti ungowebala Ekubeni ecelwe ukuba ayekwezabamnyama akavumanga; ukutshwe kuleyo ngamadoda amabini engavumi. Amatyalala ate lomcimbi ungapandle kwaquo; waba uyasinda ekatsini omalala.

UMTSHAINA ongu Ah Young ubepambi kwamatyala ase Rautini ngokutata itikiti yodidi Iwesibini ezinqweleni zakwaloliwe kanti ungowebala Ekubeni ecelwe ukuba ayekwezabamnyama akavumanga; ukutshwe kuleyo ngamadoda amabini engavumi. Amatyalala ate lomcimbi ungapandle kwaquo; waba uyasinda ekatsini omalala.

UMTSHAINA ongu Ah Young ubepambi kwamatyala ase Rautini ngokutata itikiti yodidi Iwesibini ezinqweleni zakwaloliwe kanti ungowebala Ekubeni ecelwe ukuba ayekwezabamnyama akavumanga; ukutshwe kuleyo ngamadoda amabini engavumi. Amatyalala ate lomcimbi ungapandle kwaquo; waba uyasinda ekatsini omalala.

UMTSHAINA ongu Ah Young ubepambi kwamatyala ase Rautini ngokutata itikiti yodidi Iwesibini ezinqweleni zakwaloliwe kanti ungowebala Ekubeni ecelwe ukuba ayekwezabamnyama akavumanga; ukutshwe kuleyo ngamadoda amabini engavumi. Amatyalala ate lomcimbi ungapandle kwaquo; waba uyasinda ekatsini omalala.

UMTSHAINA ongu Ah Young ubepambi kwamatyala ase Rautini ngokutata itikiti yodidi Iwesibini ezinqweleni zakwaloliwe kanti ungowebala Ekubeni ecelwe ukuba ayekwezabamnyama akavumanga; ukutshwe kuleyo ngamadoda amabini engavumi. Amatyalala ate lomcimbi ungapandle kwaquo; waba uyasinda ekatsini omalala.

UMTSHAINA ongu Ah Young ubepambi kwamatyala ase Rautini ngokutata itikiti yodidi Iwesibini ezinqweleni zakwaloliwe kanti ungowebala Ekubeni ecelwe ukuba ayekwezabamnyama akavumanga; ukutshwe kuleyo ngamadoda amabini engavumi. Amatyalala ate lomcimbi ungapandle kwaquo; waba uyasinda ekatsini omalala.

UMTSHAINA ongu Ah Young ubepambi kwamatyala ase Rautini ngokutata itikiti yodidi Iwesibini ezinqweleni zakwaloliwe kanti ungowebala Ekubeni ecelwe ukuba ayekwezabamnyama akavumanga; ukutshwe kuleyo ngamadoda amabini engavumi. Amatyalala ate lomcimbi ungapandle kwaquo; waba uyasinda ekatsini omalala.

UMTSHAINA ongu Ah Young ubepambi kwamatyala ase Rautini ngokutata itikiti yodidi Iwesibini ezinqweleni zakwaloliwe kanti ungowebala Ekubeni ecelwe ukuba ayekwezabamnyama akavumanga; ukutshwe kuleyo ngamadoda amabini engavumi. Amatyalala ate lomcimbi ungapandle kwaquo; waba uyasinda ekatsini omalala.

UMTSHAINA ongu Ah Young ubepambi kwamatyala ase Rautini ngokutata itikiti yodidi Iwesibini ezinqweleni zakwaloliwe kanti ungowebala Ekubeni ecelwe ukuba ayekwezabamnyama akavumanga; ukutshwe kuleyo ngamadoda amabini engavumi. Amatyalala ate lomcimbi ungapandle kwaquo; waba uyasinda ekatsini omalala.

UMTSHAINA ongu Ah Young ubepambi kwamatyala ase Rautini ngokutata itikiti yodidi Iwesibini ezinqweleni zakwaloliwe kanti ungowebala Ekubeni ecelwe ukuba ayekwezabamnyama akavumanga; ukutshwe kuleyo ngamadoda amabini engavumi. Amatyalala ate lomcimbi ungapandle kwaquo; waba uyasinda ekatsini omalala.

UMTSHAINA ongu Ah Young ubepambi kwamatyala ase Rautini ngokutata itikiti yodidi Iwesibini ezinqweleni zakwaloliwe kanti ungowebala Ekubeni ecelwe ukuba ayekwezabamnyama akavumanga; ukutshwe kuleyo ngamadoda amabini engavumi. Amatyalala ate lomcimbi ungapandle kwaquo; waba uyasinda ekatsini omalala.

UMTSHAINA ongu Ah Young ubepambi kwamatyala ase Rautini ngokutata itikiti yodidi Iwesibini ezinqweleni zakwaloliwe kanti ungowebala Ekubeni ecelwe ukuba ayekwezabamnyama akavumanga; ukutshwe kuleyo ngamadoda amabini engavumi. Amatyalala ate lomcimbi ungapandle kwaquo; waba uyasinda ekatsini omalala.

UMTSHAINA ongu Ah Young ubepambi kwamatyala ase Rautini ngokutata itikiti yodidi Iwesibini ezinqweleni zakwaloliwe kanti ungowebala Ekubeni ecelwe ukuba ayekwezabamnyama akavumanga; ukutshwe kuleyo ngamadoda amabini engavumi. Amatyalala ate lomcimbi ungapandle kwaquo; waba uyasinda ekatsini omalala.

UMTSHAINA ongu Ah Young ubepambi kwamatyala ase Rautini ngokutata itikiti yodidi Iwesibini ezinqweleni zakwaloliwe kanti ungowebala Ekubeni ecelwe ukuba ayekwezabamnyama akavumanga; ukutshwe kuleyo ngamadoda amabini engavumi. Amatyalala ate lomcimbi ungapandle kwaquo; waba uyasinda ekatsini omalala.

UMTSHAINA ongu Ah Young ubepambi kwamatyala ase Rautini ngokutata itikiti yodidi Iwesibini ezinqweleni zakwaloliwe kanti ungowebala Ekubeni ecelwe ukuba ayekwezabamnyama akavumanga; ukutshwe kuleyo ngamadoda amabini engavumi. Amatyalala ate lomcimbi ungapandle kwaquo; waba uyasinda ekatsini omalala.

UMTSHAINA ongu Ah Young ubepambi kwamatyala ase Rautini ngokutata itikiti yodidi Iwesibini ezinqweleni zakwaloliwe kanti ungowebala Ekubeni ecelwe ukuba ayekwezabamnyama akavumanga; ukutshwe kuleyo ngamadoda amabini engavumi. Amatyalala ate lomcimbi ungapandle kwaquo; waba uyasinda ekatsini omalala.

UMTSHAINA ongu Ah Young ubepambi kwamatyala ase Rautini ngokutata itikiti yodidi Iwesibini ezinqweleni zakwaloliwe kanti ungowebala Ekubeni ecelwe ukuba ayekwezabamnyama akavumanga; ukutshwe kuleyo ngamadoda amabini engavumi. Amatyalala ate lomcimbi ungapandle kwaquo; waba uyasinda ekatsini omalala.

UMTSHAINA ongu Ah Young ubepambi kwamatyala ase Rautini ngokutata itikiti yodidi Iwesibini ezinqweleni zakwaloliwe kanti ungowebala Ekubeni ecelwe ukuba ayekwezabamnyama akavumanga; ukutshwe kuleyo ngamadoda amabini engavumi. Amatyalala ate lomcimbi ungapandle kwaquo; waba uyasinda ekatsini omalala.

UMTSHAINA ongu Ah Young ubepambi kwamatyala ase Rautini ngokutata itikiti yodidi Iwesibini ezinqweleni zakwaloliwe kanti ungowebala Ekubeni ecelwe ukuba ayekwezabamnyama akavumanga; ukutshwe kuleyo ngamadoda amabini engavumi. Amatyalala ate lomcimbi ungapandle kwaquo; waba uyasinda ekatsini omalala.

UMTSHAINA ongu Ah Young ubepambi kwamatyala ase Rautini ngokutata itikiti yodidi Iwesibini ezinqweleni zakwaloliwe kanti ungowebala Ekubeni ecelwe ukuba ayekwezabamnyama akavumanga; ukutshwe kuleyo ngamadoda amabini engavumi. Amatyalala ate lomcimbi ungapandle kwaquo; waba uyasinda ekatsini omalala.

Imvo Zabantsundu.

NGOLWESITATU. MARCH 28 1894

Iveki.

KUKO oselebulewe yingqakaqa kwa Cama.

INKUMBI zikankanywa e Molteno nase Stomberera.

KUBETWA intsimbi e Mooi Drift, e Free State, xa kuzakuselwa utywala ngabe Sutu.

INKOSI U LOBENGULA wanewatywa ngu Yinjani namakwenkwana anibalwa malunga no 7 March. Wabulawa yicesika.

AMA NGESI amabini enjenjeya ngolwesi Hlanu Iwengapaya, ngenqwelo ezimbini, ukuputuma abafazi nabantwana baka Lobengula, clayishe ukutya namayeza. Babuyiselwa kwa Bulawayo.

NGOLWESI-BINI Iwepelileyo, 20 March, e Kapa kukutshwe intshumayelo ya Komkulu yokuvakalisa ukuba ubukumkani be Nkosazana yase Biritani bungene kwelama Mpondo ngemvume yenkosi namapakati akona

INDLOVU zidale umonakalo ombi emzini ka Mr. Harvey, e Addo ngase Bai. Apo zimbi kona kusekubeni zingafuni ukoyikiswa ngompu kuba zimleqe unyana wake zakumfaka endlini. Ngati ziyazi ukuba ngumteto ukuba zingenziwa nto.

NAKUMAHLULO wase Skapu imvula zine kanobom, kodwa inkumbi zizihlalele into ezibulumayo. Kubi. Nqakwana liginityisa amate kukuba kusitwala kuko umbungwana ozingeneleyo nazo, uyahleza, kangangokuba zininzi ezibulawa nguwo.

UMTSHAINA ongu Ah Young ubepambi kwamatyala ase Rautini ngokutata itikiti yodidi Iwesibini ezinqweleni zakwaloliwe kanti ungowebala Ekubeni ecelwe ukuba ayekwezabamnyama akavumanga; ukutshwe kuleyo ngamadoda amabini engavumi. Amatyalala ate lomcimbi ungapandle kwaquo; waba uyasinda ekatsini omalala.

UMTSHAINA ongu Ah Young ubepambi kwamatyala ase Rautini ngokutata itikiti yodidi Iwesibini ezinqweleni zakwaloliwe kanti ungowebala Ekubeni ecelwe ukuba ayekwezabamnyama akavumanga; ukutshwe kuleyo ngamadoda amabini engavumi. Amatyalala ate lomcimbi ungapandle kwaquo; waba uyasinda ekatsini omalala.

UMTSHAINA ongu Ah Young ubepambi kwamatyala ase Rautini ngokutata itikiti yodidi Iwesibini ezinqweleni zakwaloliwe kanti ungowebala Ekubeni ecelwe ukuba ayekwezabamnyama akavumanga; ukutshwe kuleyo ngamadoda amabini engavumi. Amatyalala ate lomcimbi ungapandle kwaquo; waba uyasinda ekatsini omalala.

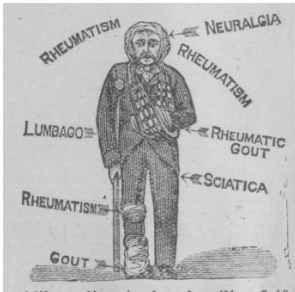
UMTSHAINA ongu Ah Young ubepambi kwamatyala ase Rautini ngokutata itikiti yodidi Iwesibini ezinqweleni zakwaloliwe kanti ungowebala Ekubeni ecelwe ukuba ayekwezabamnyama akavumanga; ukutshwe kuleyo ngamadoda amabini engavumi. Amatyalala ate lomcimbi ungapandle kwaquo; waba uyasinda ekatsini omalala.

UMTSHAINA ongu Ah Young ubepambi kwamatyala ase Rautini ngokutata itikiti yodidi Iwesibini ezinqweleni zakwaloliwe kanti ungowebala Ekubeni ecelwe ukuba ayekwezabamnyama akavumanga; ukutshwe kuleyo ngamadoda amabini engavumi. Amatyalala ate lomcimbi ungapandle kwaquo; waba uyasinda ekatsini omalala.

UMTSHAINA ongu Ah Young ubepambi kwamatyala ase Rautini ngokutata itikiti yodidi Iwesibini ezinqweleni zakwaloliwe kanti ungowebala Ekubeni ecelwe ukuba ayekwezabamnyama akavumanga; ukutshwe kuleyo ngamadoda amabini engavumi. Amatyalala ate lomcimbi ungapandle kwaquo; waba uyasinda ekatsini omalala.

UMTSHAINA ongu Ah Young ubepambi kwamatyala ase Rautini ngokutata itikiti yodidi Iwesibini ezinqweleni zakwaloliwe kanti ungowebala Ekubeni ecelwe ukuba ayekwezabamnyama akavumanga; ukutshwe kuleyo ngamadoda amabini engavumi. Amatyalala ate lomcimbi ungapandle kwaquo; waba uyasinda ekatsini omalala.

ISEBENZA NGOBUGQI. I-RHEUMATICURO! IYEZA ELIKULU LASE SOUTH AFRICA.



Alikaza linqatyelwe ukupilisa izifo Zamatambo. Isinqe, ingaqambo Zentloko.

Lingqinwe ngamawaka. Umenzi walo kupelu ngu

J. JONES, Cape Town.

LINOKUTENGWA NAPINA

G. P PERKS NO NYANA E QONCE, YEYONA NDAWO

YOKUTENGA Imisesane yoku "Ngeja," Imisesane Yokutshata, Amacici Namehlo (Spectacles).

KANANJALO XA UFUNA

UKUHLAZIYA. I WOTSHI.

MARKET SQUARE,

Kingwilliamstown

GREAT AFRICAN

ORSMOND'S

PREPARATIONNS

The GREAT AFRICAN

REMEDY.

THE STANDARD DOMESTIC MEDICINE FOR FEVER & AND COMPLAINTS OF THE HOME

THE GREAT AFRICAN

For Eczema, Eruptions, Bera, Syphilitic and Scrofulous

DISEASE BLOOD

Unvalued Tonic for FEMALES. Specific for Kidney and Urinary Disorder.

PURIFIER.

FOR

COLIC, DIARRHEA, DYSENTERY

GREAT AFRICAN

FRUIT PILLS.

For Liver, Stomach and Bowel The Cure for Piles and Constipation. Are Mild and Effective.

THE GREAT AFRICAN

HERBAL OINTMENT.

For New and Old Sore, Skin Disease, Piles, Rheumatism, Sprain. Pains in Joints and Muscle. inflammatory Swelling

MEDICAL

HALL

KING WILLIAM'S TOWN.

J. NEWING,

Umenzi Wempahla

(Ekweni ye Maclean Square) E QONCE

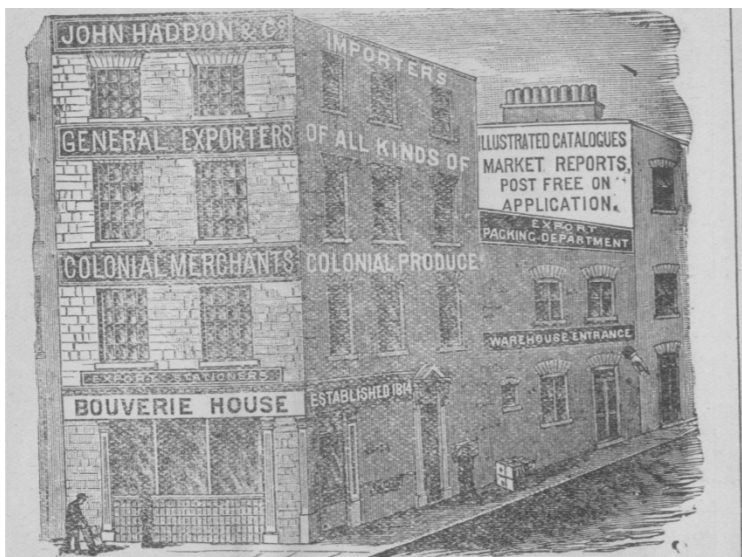
FUMANA IMPAHLA EZIPUMA NQO KUBENZI BAZO.

Impahla ze Tweed Zamanene. Impahla Zamadoda Zekodi neze Krikete.

Intlobo ezintle kunene ze Printi Nemichako ye Lokwe. Impahla Yokwaka yentlobo zonke, Ikofu ne Swekile, njalo-njalo. Yonke into intsha, ilungile, itshipu—Yizani kubona

Imveliso yomhlaba itengwa nge Cash ngamanani apqkamileyo e Malike. 6msfr18109 5msfr18109

ESTABLISHED 1814



(Opposite the Head Offices of the Church Missionary Society).

IMPORTERS EXPORTERS

FIBRES OF ALL KINDS DRUGS, DYSALTRIES SPICES, HIDES, SKINS, TEA, COFFEE, COPRA, SUGAR GUMS, CURIOS, GENERAL PRODUCE,

MANCHESTER GOODS, DRAPERY, WOOLLENS, MEN'S CLOTHING, PROVISIONS, IRONMONGERY, TOOLS & MACHINERY

REFERENCES Customers in all parts of THE WORLD. We will send, post free, on application, our recently published Volume on

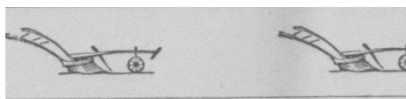
"THE PRODUCE OF TRE WORED," Every Planter, Estate Manager, or Produce Merchant should have a copy. It is the only volume of its kind ever published.

TEEMS, SAMPLES, AND ILLUSTRATED CATALOGUES BY RETURN MAIL.

JOHN HADDON & CO., COLONIAL & INDIAN MERCHANTS, Bouverie House, Salisbury Square, E.C.

ChblePran—"Hflutun London."

a B. Code u. d Fourth Edition.



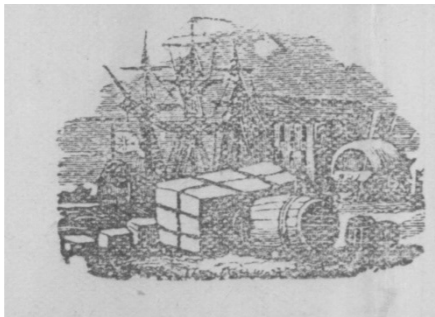
KWAZISWA

UMZI OMELE I CALA

UKUBA Ivenkile ebhanjiswa ngu Mr. JOHN WILSON, isezandleni ngoku zo

WM. SAVAGE & SONS

Abazimisele ukuwuquba umsebenzi NGOHLOLU OLUPEZULU; kunjalo-nje IZAKWANDISWA KWINTO EBIYIYO.



Uboya! Uboya!

U KATA!

ISEBE LAMAQABA

LAHLUKILE KANYE KWELABE

SIKOLO.

tyali, I Printi, Ingubo zokuvata—Yinto eninzi.

I-BLANKETE, AMAFELANE, AMABHAI NEZIBHALALA.

Singama elidumileyo kuyo yonke i Transkei nge Blankete zctu kwane Zibhalala.

IMPAPHLA YOKUTSHATA:

Elisebe lipantsi kokulaula kuka Mr. BATTERSHILL wetu onamava amakulu ngeyona nto kanye ifunekayo kwabalungiselela Imitsbato. Ngoko imicimbi epatshela yena iyakwanelisa kanye.

INGUBO ZAMADODA:

Intlobo zonke zezitofu, ne Twidi, Ibhathi, Ibhulukwe—ngazwinye into yonke angayifunayo umntu.

W. SAVAGES. SONS,

JESSE S. HONEY,

IARENTE NOMFANDESI,

[Umxabiso Wakomkulu, MACLEAR.

Abameli Micimbi

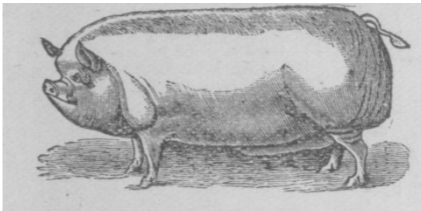
E. J BYRNE, (ATTORNEY, ETC.)

UMTELELELI-Ematyaleni, Umbali Minqopiso yengqesho nyeentengiso mihlalaba. Ukwa yi Arente ye Gresham Life Assurance Society. No. S3, Maclean Street,

E-QONCE.

Wonke umsebenzi endiwupatisiweyo wenziwa msinyane ungowenene. CAMBRIDGE ROAD, Kingwilliamstow

Wonke umsebenzi endiwupatisiweyo wenziwa msinyane ungowenene.



KWABAKUFUPI NABAKUDE

(Ngokukodwa AMA TRANSPORT)

IMIXESHO YENYAMA NE ZONKA,

NINOKUYIFUMANA KO

Smith & Gregg,

UMELENE NAMAGQUBA APAKATI

CAMBRIDGE || ROAD, KING WILLIAMS TOWN.

J. LAMONT.

NKATULA! NKATULA! QUEENSTOWN.

UKUPELA kwevenkile e Komani apo amafama anokuzifumana zonke izinto azifunayo.

U J.L

Unga angacela amehlo ecelela imfumba anazo ze Tyali, Blankete, izibhalala, Ingubo Zamadoda, Ihempe, Iprinti, izihlangu, Tsali, i—ngazwinye yonke into enokulangazelelwa ngumzi ontsundu, ngamaxabiso angazanga awise ngapambili e Queenstown.

Ukuze uynakane nawe into esiyenzayo elifezekileyo ikuba 75 Eagle litengiswa nge 30/-; Imixokelelwana yokusala, yenkabi 10/-, 10/-; Iswekile elungileyo embusi 30/- nge 100lbs; ikofu 1/ ngeopenti.

Kwakona unemfumba yengubo ezingonoxesha, zonke ngamaxabiso abaluleko ngobupantsi. Lilo eli ixesha labahlobo betu bangapandle ukuba batenge.

IMVELISO.

Awona manani aphezulu anokufunyanwa ngo Boya, izikumba, Imfele, ukudla, njalo njalo, njalo njalo.

J. LAMONT,

Kwi Boloro yakwa Komani, (QUEENSTOWN).

"UMGUBO KA KEATING," "UMGUBO KA KEATING," "UMGUBO KA KEATING," "UMGUBO KA KEATING."

Lomgubo, unconywa kangaka, awulinganiswa nanto kanve ekutshabalaliseni i NCUKUTU, INTWAKUMBA AMANUNDU, OQONGQOTWANE, NAZO zonke izilwanyana (elixa ungena ngozi kuzo zonke izidalwa eziphilileyo). Yonke impahla yoboya kwanemfele ezitambileyo ezinoboya (furs) mazigalwe lomgubo pambi kokuba zibekwe. Oya ngaselwandle makangawushiyi. Ukunqanda ukudaniswa zamelani ukuba nalo "Mgubo ka Keating." Akuko wumbi umgubo unomsebenzi ngapandle kwawo.

INCUKUTU, INTWAKUMBA, UBULA LA I AMANUNDU, OQONGQOTWANE, UNGCONGCONI.

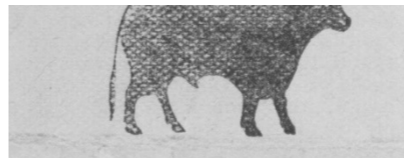
Awugqitwa nto ekutshabalaliseni INTWAKUMBA, INCUKUTU, AMAPELA, OQO-NGQOTWANE, AMANUNDU kwi MFE-LE EZITAMBILEYO EZINOBOYA, nakwezinye intlobo zezilwanyana. Abadlali baya kwufumana unexabiso ekubaleni intwakumba ezinjini, kwanamanekezi kwizinja zawo azitanda kunene.

ULUNTU LUYAVUSWA ukuba lukangele ukuba izigumba zowona inguwo lo ingubo zibe zezi nesincamatiselo sika THOMAS KEATING. Utengiswa nge Nkonxa nange Bhotile kupela.

Amaqamba ka Keating Epalo," "Amaqamba ka Keating Epalo," "Amaqamba ka Keating Epalo," "Amaqamba ka Keating Epalo," "Amaqamba ka Keating Epalo."

UMFUNO ONESWEKILE ngembonakalo no suvakala kwawo emlonjeni, unika indlela eyamkeleka kakulu yokusebenzisa ukupela kweyeza diqinisekileyo LAMAPALO ASEMATUNJINI, Liyeza cilunge kwapela laye lengerara, lenzelwe ibantwana ngokukodwa. Litengiswa nge Nkonxa ne Bhotile kuzo zonke izindlu zamayeza.

Umlungiseleli: THOMAS KEATING, e London.



UMPILISI WASEMAXHOSENI

-WE-

MOFU EMPAHLENI,

IYEZA elenziwe ngemichiza yase Maxhoseni, bonke abake balilanga bati "Iise lodwa."

U Mr. S. GUDULA wase Mncotsho uti:—"Wovuyiswa njengam ukwa ukwa IYEZA lako lo MOFU lizipilise zonke inkomo abezalano ngexesha elingepi kuba bese ndancama ukuba kungako iyeza lesisifo. Ndilyaleza emzini."

3/6 IBHOTILE.

LENZIWA KUPELA NGU

H. J. DOBLE, Mayen

MACLEAN STREET,

(PAMBI KO BHANI),

E QONCE.

IZAZISO ZAKOMKULU.



ZISHicilelwa 'NGE 'GUNYA.

ISAZISO SAKOMKULU.—No 20, 1891.

Kwi Ofisi ka Nocanda, E. Kapa, 15 January, 1891.

NGEMISELO ye Siqendu II, Um'eto No. 15 ka 1887, kuyaziswa ngokubanzi ukuba lemhlaba ilandelayo yakwa Rulumeni, ekwi Siqingata ease Matatiele iya kutengiswa efanedni eliya kuba pambi kwe Ofisi yo Mantyi e MATATIELE, nge 7 o'clock a.m. kusa a, ngolwesi NE., 26 APRIL, 1891, panti kwemigaliso neminopiso yo Mieto ongentla, nangezimi selo zelifandesi ezibulweyo, nezintu zixelwe ngalomini yefandesi.

Isiziba ngasinye siya kutengiswa ngemali esixhonywe ngayo, waye othe wabidha ngapezu kwabanye, kananjalo ngemali engengapantsi koxhonywe ngayo, eyakuba ngowutengileyo, umtengi ke lowokoba kokwake ukuyihlala yonke ngaxanye nokuba yinxalenye yayo ngalomhla we Fandesi. Ekoti ko

(i) Kungoko ntlawo ngalomhla wefandesi isahlulo seshumi sirolo ngenyanga ezintandani, ize esoye isahlulo seshumi girole kwinyanga ezilishumi linambini ezilandela umhla wefandesi. (ii) Ukuba imali ehlanwe ngomhla wefandesi ngapantsi kwesahlulo seshumi isahlulo seshumi sirolo ngenyanga ekupeleni kwinyanga ezintandani, ize isahlulo seshumi esisahluleyo sirolo kwinyanga ezilishumi linambini kususela kumhla wefandesi. (iii) Ukuba imali ehlanwe ngomhla wefandesi ipakati kwesahlulo seshumi nesahlulo sesihlanu sikhulwe kwinyanga ezilishumi linambini emva kwefandesi elo.

Inzala yezontlawo yoba ziponti zone ekulwini ngenyanga; ekoti ukhululwa kwayo nenzala leyo kuqinisekile ngabameli abafekileyo ababini ngokwaneliseka ko Mantyi—abameli abofika bazibopelele kunye ngabanye ukuba ngabo abanetyala, be-ngeza kuzilandulela nangantoni.

Indleko sonocanda, njalo njalo, nstayitilo (12/6) zohlalulwa ku Mantyi, nakubani ongunwumbi owonikwa igunya loko kwangalomhla wefandesi. Unotenga lowo wofika abahle umnqopiso ngezahlu ezine nezihlanu eyuma ukuba wohlalulwa inzala—eziponti ezine ngokulu, angati ukuba wayerole ngomhla wefandesi ngapazulu kwesahlulo sesihlanu, aselewe nzela umnqopiso isisalela semali yentengo leyo. Unotenga woba nelungelo lokuhlala lomini yonke mhlambi isahlulo semali yalumnqopiso, kungengapantsi kwamashumi omahlano eponi.

Umfanekiso walemihlaba, kwakunye nozimiselel zefandesi, zingabonwa kwi ofisi yo Nocanda e Kapa, nakwi ofisi yo Mantyi e Matatiele.

J. TEMPLE HORNE,

Unocanda Omkulu.

E M B O.

Isiqingata sase Matatiele.

Lot No 7546, esiziba somhlaba esikwisiqingata sase Matatiele, ekutiwa yi Glen-leary, ubukulu 503 imokolo 18 square roads. Ngasentla upele ngodonga olungapakati lomlambo eli Tyinira, ngasentsantshona-langa ngelali yabantsundu, ngase mpumalanga nge Drummondelliot, ngasentla entshonalanga nge Standford. Inani oxhonywe ngalo £510 Ind'eko zocando, njalo njalo, £16 10/7; itaitile 12/6.

Lot No 7517, oyi George herbert, ubuku lu zimokolo ezi 900; ngasentla empumalanga upele nge Etheldale, ngezantsi entshona-langa ngodonga olungapakati lwe Tyinira, ngezantsi empumalanga nge Harryebden, ngentla entshonalanga ngelali yabantsundu. Uxhonywe nge £475; ind'eko zocando njalo njalo, £18 19/9; itaitile 12/3.

Lot No 7548, oyi Drummondelliot, ubukulu 1079 imokolo, ngasentla upele ngodonga olungapakati lwe Tyinira, ngasentsantshona-langa ngelali yabantsundu, empumalanga nge Polygon, ngase ntshonalanga yi Glenleary; Uxhonywe nge £475; ind'eko zocando njalo njalo £20 5/6; itaitile 12/3.

Lot No 7549 oyi Polygon, ubukulu 1115 imokolo, ngasentla upele ngodonga olungapakati lwe Tyinira, ngasentsantshona-langa nge Drummondelliot, ngasentla empumalanga ngelali yabantsundu ne Simpson, ngase ntshonalanga lidlelo lase Matatiele. Uxhonywe nge £710; ind'eko zocando njalo njalo £27 17/; itaitile 12/3.

Lot No 7554, oyi Donald, ubukulu 1011 imokolo; ngasentla entshonalanga upele nge Dge Wallace, ngezantsi entshonalanga nge Martinfield, nodonga olungapakati lwe Tyinira. Uxhonywe nge £710; indleko zocando njalo njalo £30 12/9, itaitile 12/3.

Lot No 7555, oyi Wallace, ubukulu 962 imokolo, ngasentla entshonalanga upele nge Etheldale ne St Pauls, ngezantsi empumalanga nge Donald ne St Pauls, ngentla empumalanga nge St Pauls, ngasentsantshona-langa nge Tyinira, ngezantsi entshonalanga nge Martinfield ne St Pauls. Uxhonywe nge £860; indleko zocando njalo njalo £27 3/10, itaitile 12/3.

Lot No 7557, oyi Oochet, ubukulu 338 imokolo; ngentla entshonalanga upele nge la: yabantsundu, ngezantsi empumalanga nge Kosana, ngentla empumalanga ngodonga olung ipakati lwe Tyinira, ngezantsi entshonalanga yi Lali yabantsundu. Uxhonywe nge £220; indleko zocando njalo njalo £13 16/6; itaitile 12/3.

Lot No 7550, oyi Simpson, ubukulu 1211 imokolo 290 square roads; ngasentla upele nge Lali yabantsundu (i Khusa), ngezantsi entshonalanga nge Polygon, empumalanga ngedlele lase Matatiele, entshonalanga nge Polygon. Uxhonywe nge £850; indleko zocando £19 10/; itaitile 12/3.

Lot No 7551, oyi Harryebden, ubukulu 875 imokolo; ngentla empumalanga upele nge Etheldale, ngezantsi entshonalanga ngodonga olungapakati lwe Tyinira, ngezantsi empumalanga nge Charlesbrownlee, ngentla entshonalanga nge Georgeherbert, uxhonywe nge £440; indleko zocando njalo njalo £17 7/; itaitile 12/3.

Lot No 7552 oyi Charlesbrownlee, ubukulu 789 imokolo; ngentla upele nge Harryebden, ngezantsi empumalanga nge Martinfield, ngentla empumalanga nge Etheldale, ngentla entshonalanga nge

Harryebden, ngezantsi ngodonga olunga. pntaki lwe Tyinira. Uxhonywe nge £490; indleko zocando njalo njalo £16 6/6, itaitile 12/3.

Lot No 7553, oyi Martinfield, ubukulu 1013 imokolo; ngentla entshonalanga upele nge Charlesbrownlee, ngezantsi ngodonga olungapakati lwe Tyinira, ngase mpumalanga nge Donald, ngentla empumalanga nge Wallace. Uxhonywe nge £760; indleko zocando njalo njalo £23 7/6, itaitile 12/3.

Edolopini yase Matatiele.

Lot No 7435, Isiziba somhlaba ose dolo-pini yase Matatiele, ekuti va yi Erf yeitye lika Gaskill, ubukulu 207 square yards 93 square feet, ngamacala ouke upele ngedlelo. Uxhonywe nge £5; indleko zocando njalo njalo £6 15/; itaitile 12 3. (Ukubingiswa kwalumtzi okulixabiso le £220 kofuneka kuhlalule ngumtzi ngomhla wefandesi.)

E CUMAKALA.

Kwakona ngokwe Saziso Sakomkulu. No. 39, 1894, panti kwemigqao yefandesi lase Matatiele, kny kutengiswa imihlaba ekwi Siqingata sase Cumakala, pambi kwe Ofisi ye Mantyi yase CUMAKALA, ngezantsi yeshimi kusasa, ngolwesi HLANU, JUNE 8, 1891.

Lot No 7576, umhlaba ekwi Siqingata sase Cumakala, kubn Felkornet No 1, ongu Lot No 2, knfupi nomz ina wase Cumakala, ubukulu 312 square roads 42 square feet; ngasentla entshonalanga upele xa ngedlelo, ngezantsi empumalanga nge strata, ngentla empumalanga ngomzi womntu ngasaxa-ntsi entshonalanga. Uxhonywe nge £1, indleko zocando £3 5/6, itaitile 12/3.

Lot No 7577, ongu Lot No 4 kufupi nomz. zana wase Cumakala, ubukulu 312 square roads 42 square feet; ngasentla entshonalanga upele xa ngedlelo, ngezantsi empumalanga ngedlelo, ngentla empumalanga ngomzi womntu, k wangasentsantshona-langa ngomzi womntu, ngezantsi entshonalanga. Uxhonywe nge £1, indleko zocando £3 5/6, itaitile 12/3.

Lot No 7578 ongu Lot No 7, kufupi nomz. zana wase Cumakala, ubukulu 2 imokolo 79 square roads 3 square feet; ngasentla entshonalanga upele xa ngedlelo, ngezantsi empumalanga ngedlelo, ngentla empumalanga ngomzi womntu, ngezantsi entshonalanga. Uxhonywe nge £2 10/, indleko zocando £3 5/6, itaitile 12/3.

Lot No 7579, ongu Lot No 8 kufupi nomz. zana wase Cumakala, ubukulu 1 imokolo 39 square roads 77 square feet; ngasentla entshonalanga upele xa ngedlelo, ngezantsi empumalanga ngedlelo, ngentla empumalanga ngomzi womntu, ngezantsi entshonalanga. Uxhonywe nge £1 10/, indleko zocando £3 5/6, itaitile 12/3.

Lot No 7580, ongu Lot No 9 kufupi nomz. zana wase Cumakala; ubukulu 2 imokolo 79 square roads 3 square feet; ngasentla entshonalanga upele xa ngedlelo, ngezantsi empumalanga ngestrata, ngentla empumalanga ngasentsantshona-langa ngomhla womntu. Uxhonywe nge £2 10/, indleko zocando £3 5/6, itaitile 12/3.

Lot No 7581 ongu Lot No 14, kufupi no. inzana wase Cumakala; ubukulu 566 square roads 137 square feet. Uxhonywe nge £1 10/, indleko zocando £3 5/6, itaitile 12/3.

Lot No 7582 ongu Lot No 15, kufupi nomz. zana wase Cumakala, ubukulu 1 imokolo 250 square roads 65 square feet. Uxhonywe nge £2; indleko zocando £3 5/6, itaitile 12/3.

Lot No 7583 ongu Lot No 16, kufupi no mzana wase Cumakala; ubukulu 1 imokolo 250 square roads 65 square feet. Uxhonywe nge £2; indleko zocando £3 5/6, itaitile 12/3.

Lot No 7584 ongu Lot No 17, kufupi no mzana wase Cumakala; ubukulu 283 square roads 67 square feet. Uxhonywe nge £1, indleko zocando £3 5/6, itaitile 12 3.

Lot No 7585 ongu Lot No 18, kufupi no mzana wase Cumakala; ubukulu 1 imokolo 25 square roads 65 square feet. Uxhonywe nge £2, indleko zocando £3 5/6, itaitile 12/3.

Lot No 7586 ongu Lot No 19, kufupi no mzana wase Cumakala; ubukulu 4 imokolo 434 square roads 122 square feet. Uxhonywe nge £5, indleko zocando £3 5/6, itaitile 12/3.

Lot No 7587 ongu Lot No 23, kufupi no mzana wase Cumakala; ubukulu 283 square roads 67 square feet. Uxhonywe nge £1, indleko zocando £3 5/6, itaitile 12/3.

Lot No 7588 ongu Lot No 21, kufupi no mzana wase Cumakala; ubukulu 283 square roads 67 square feet. Uxhonywe nge £1 10/, indleko zocando £3 5/6, itaitile 12/3.

Lot No 7589 ongu Lot No 25, kufupi no mzana wase Cumakala; ubukulu 283 square roads 67 square feet. Uxhonywe nge £1, indleko zocando £3 5/6, itaitile 12/3.

Lot No 7590 ongu Lot No 26, kufupi no mzana wase Cumakala; ubukulu 283 square roads 67 square feet. Uxhonywe nge £1, indleko zocando £3 5/6, itaitile 12/3.

Lot No 7591 ongu Lot No 28, kufupi no mzana wase Cumakala; ubukulu 283 square roads 67 square feet. Uxhonywe nge £1, indleko zocando £3 5/6, itaitile 12/3.