

DYER AND DYER

(LIMITED.)

KING WILLIAMSTOWN,

Impahla Entsha Yasehlotyeni.

Isuti Ezintsha ze Twidi ziqala kwi 16/6.

Isuti Ezintsha ze Diagonal Tweed Emnyama ziqala 25/.

Isuti Ezintsha ze Blue Serge ziqala kwi 25/.

Iminqwazi Emitsha, Ihempe, Izitadi, Izihlangu, Amaqhina, njalo-njalo.

Ibhulukwe Zamadoda Zekodi ziqala kwi 4 6.

Ihempe Zamadoda Zokusebenza ziqala kwi 1/ inyo.

I Flanellette Zamadoda ziqala kwi 1/3 inye.

Ngokubalulekileyo—Ibhulukwe Ezilungileyo Zamadoda ze Whipcord 6/6.

Ibhatyi Ezilungileyo Zamadoda ze Whipcord 10 '6.

Impahla ye Kriketi ne Tennis,

ISANDULUKUFIKA :

IBHATI ne BALLS, IZITAMPU, I-LEG GUARDS, I-GLOVES—zokudlala nozokunqanda emva kwe Wikiti. I RACQUETS ze TENNIS, IBHOLA, i NETI, njalo-njalo, yonke into efunekayo.

AMAXABISO AHLISIWEYO KWI CLUBS.

Eyona igqitiseleyo neyona itshipu kuzo zonke ngempahla eyenziwe Ngabasiki, ne Mpahla Zabafundisi, njalo-njalo. .

DYER NO DYER,

EQONCE.

ITUBA LOKWENZA IMALI.

Zisani bonke UBOYA benu

Zisani bonke UBOYA BEBHOKWE

Zisani wonke UMBONA wenu

Zisani onke AMAZIMBA enu

Zisani yonke INGQOLOWA yenu

Zisani yonke IHABILE yenu.

Nayo yonke enye imveliso eninayo naniya kufumana amanani Apa amileyo e Cash ngayo—YIZANI KUBEKANYE naniya kuhlala nisiza ko

JAMES HODGES and CO.

QUEENSTOWN

Iyeza Elingummangaliso.

BEECHAM'S PILLS

Zikulungele Ukuqunjelwa nezinye intlungu, ezinjie ngo Moya ne Ntlungu e Siswini, Intloko Ebulalayo, Ukuba nasi Yesi, Intluta nokuqunjelwa emva Kokutya, Ukupitizela kwe Ntloko, Nobundongela, Ukuqazazela Yinqqele, Imfudumalo Zobushushu, Umnqumi, Ukupefumla Okuqapayo (Ipika), Ukungayi Ngasese, Ukujaduka Komzimba, Ukungalali Kamnandi, Amapupa Awoyikekayo, nako konke Ukungcangcazela, njalo njalo. Idosi yo- KUQALA INOKUNCEDA KWISITUBA SEMIZUZU ENGAMASHUMI MABINI. Asintsoni lonto. Utulwelwe ngamnye ucalwa ukuba utate ibhokisana yezi Pills, ziza kuvunywa ukuba ibhokisana yazo "ifanele i Pontii enesheleni."

I PILLS zika BITSHIM, zitatwe ngemigaqo emiselweyo, zibehle ziwapilise nge amankazana, Azedendi ukupilisa inqo nizimba.

Kwi Sisu esi Butataka; Nokungatandi Kutya; Nesibindi Esingapilileyo: zisebenza ngobugqi idosi ezimbalwa zetiza impiliso engummangaliso kwanamalungu Ayinqobo Emntwini; Zomeleza imisipa; zibuyisa intlaha yomntu obesekudala yatusabayo; zenza ukuba ubani abuye akutande bukali ukutya, zivuselela BONKE UBHLE BE MPIO NENKUTALO YONZIMBA Womntu, ezi Pilisi zidume ngokukodwa ekupiliseui Icesina kmazwe ashushu. Ezi " zinyaniso " ezivunywa yinyambalala yabantu, kuzo zonke indidi zabantu, obunye ubungqina obuqeleleyo ngobutataka bobu bokuba i *Pilisi zika Bilshim lelona yeza litengwayo ngapezu kwawo onke akoyo apa emhlabeni.* Incazo ezeleyo ebhokisaneni nganye. Lenzwa ngu THOMAS BEECHAM kupela, e St. Helens, Lancashire, England.

Litengiswa ngabapitikevi bamayeza bonke ezi Kolonini.

THOMAS BAILEY & CO., ABALUNGISELELI BENTO YONKE QUEENSTOWN

BANOKU kwanekela nantonina ongayibizayo ngawona manani apantsi anokufunyanwa apa Emzantsi-Afrika.

Kaniwaqwalasele amanani etu; nize nize kubona Impahla Engummangaliso ukulunga etengiswa ngalomanani.

Ezamadoda. Izihlangu Ezimitya-mide Ezomeleleyo.

6 6, 7/-, 8 6, 9/-

Ezamadoda Izihlangu Ezimityami futshani Ezomeleleyo.

5/-, 6/6, 7/6, 8/6

Ezamadoda i Felskuni Ezomeleleyo.

5/6, 7/6, 8/6

Ezamankazana Ezomaleleyo Zotwatwa.

5/-, 6/6, 7/6

Ezamankazana Ezimitya-Mide.

4/6, 5/-, 5/6

Ezamadoda Ibhulukwe Zezitofu (Tweed), 5/-, 6/11, 8/6 Ezamadoda Isuti Zesitofu.

ziqalela kwi 16/6

Ezamadoda Ihempe Ezilushica, ziqalela kwi 9d, ziyi 4/6 Ezamadoda

Namakwenkwana Ikep, ziqalela 6 ½ d, de kuye 3/3

IMINQWAZI YAMADODA, IKAUSI, IKOLALA, INGXOWA ZABAHAMBI, INGXOWANA EZINTLE, NJALO-NJALO.

Iponti ekutengwe ngayo kwesetu isitora, itabata isituba seponti enesihlanu etenge kwezinye ivenkile.

THOS. BAILEY & CO., WEST END, E-KOMANI

PEACOCK BROS. NO WEIR, EKOMANI.

NGABATENGI abakulu Bokutya, benika awona

Manani alungileyo. E Komani apa wakuke uyekuva into abayi kupayo pambi kobuba utengise nokuba kupina.

Ihabile, Ezinkozo, Inqholowa, Irasi,

Imbotyi, I-ertyis, Umbona,

Amazimba. bahlele benawo.

JOHN LUMSDEN & CO., E GCUWA, TRANSKEI.

BAZISA Umzi Ontsundu okulo lonke ela Pe-sheya kwe Nciba okokuba BAZIKETELA NGOKWABO IMPAHLA yentlobo ntlobo zonke e SKOTILANE, engalungela imfuneko zomzi; nokokuba baya kuzingisa ukunikela

Abantsundu Abatenga nge Mali,

into ezifanele ixabiso layo.

BAVAVANYENI! NIBALINGE!

BON MARCHE

JOHN W. BAYES & CO., GRAHAMSTOWN.

IFANDESI LEMPAHLA KUMASEBE ONKE.

I Blanket zamabala ziqalela kwi 1s. 7 ½ d., Amabhayi abubanzi bupindiweyo 11 ½ d., Imiqulu Eqaqambileyo yokwenza ilokwe iqalelakwi 1 ¾ d. nge yadi, I 'Tweed' eziqaqambileyo zelokwe ziqalela kwi 3 ¾ d. nge yadi, I Flannelles 2 ¾ d. nge yadi, Ezona zilungileyo i Printi zama Jamani nama Bhulu 6 ½ d. nge yadi, Iyali zoboya ezona Fishini zintsba ziqalela kwi 3s. kudo kube nga 30s. inye, I Quilts zamabala ziqala 1s. 11 ½ d., I Quilts ezimhlope ziqala 2s. 11d., Amakulu amahlana e " knitted skirts " 1s. 2d. inye.

Zonke impahla zibhalwe ngamanani acacileyo. Akuko nkohliso. Kwisebe le lokwe (Drapery) ngexesha le Fandee i 1s. ebifudula isapulwa nge xabiso le ponti iyakuyeywa

Isebe Lezinxibo lakwa BON MARCHE:

400 ibhulukwe zamadoda (Bedford Cord) ziqala kwi 4s. 11d. inye, I Suti zamadoda ze Tweed 21s. inye, I Felt Hats ezimapiko abanzi 2s. umnye, Ibhatyi zamadoda ze Tweed ziqala kwi 6s., I Bhulukwe ze Tweed 3s. 6d.

QONDISISANI KAKUHLE—"Wonke ubani otenge izinxibo zexabiso eliyi ponti (E1) uyakwapulelwa isihlani ezi ntatu (3s.)

JOHN W. BAYES & CO., BON MARCHE
GRAHAMSTOWN, E-RINI



LEMINYAKA I 18



IGQITILEYO,

SINGENISE KWELILIZWE IBLANKETE

ZOBOYA EZILUKWE NGOBUGCISA OBU

BODWA, Igama lazo yi " EXTRA NAVY or MATTROSS "

Kungeniswe ngabanye intlobontlobo ezifana noluhlobo; esigqibe ke kwelokuba SIZIPAULE i BLANKETE ZONKE ngopawu esilunqinisele na Komkulu ngohlobo lwemifa nekiso le yongamele lenteto.

Ukuba ufuna IBLANKETE YEYENENE, kangelisa kunene ukuba inawona umfanekiso we NGONYAMA kwelinye LAMASONDO ayo.

ZONKE EZI BLANKETE ZIZEZINGATANDATYUZWAYO.

ZONKE EZI BLANKETE ZILUNGILE ZITE GUNGQU

IBLANKETE NGANYE IYAYIVELA IMBOLA.

Kwivenkile enitonga kuzo-ke bizani Iblankete ozinomfanskiso we Ngonyama.

Ziya kubaku kuzo zonke ivenkile za Pesheya kwe Nciba nase zidolopini zonke.

APO ZIPAKULWA KONA KUKO

PEACOCK BROS, and WEIR, E QONCE.

Ngabo bodwa abanokubhala lomfanekiso we Ngonyama.

Beauchamp, Booth & Co.

EYON AVENKILE INKULU

NETENGELEYO

KINGWILLIAMSTOWN & QUEENSTOWN.

ITYALI

IPRINTI

ISETINI

IKELEKO

ISHITI ZEKOYI

Impahla Yomtshato Yonke.

BEAUCHAMP, BOOTH & CO.

E-QONCE, KINGWILLIAMSTOWN

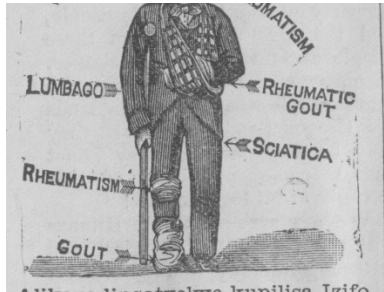
J. W GARRET & CO.

LADY FRERE

IZITORA " EZITSHIPU."

ISEBENZA NBOBUGQI
I-RHEUMATICURO

Iyeza elikhulu lase
South Africa



Alikaze linqatyelwe kupilisa Izifo
Zamatambo. Isinqe, ingqaqambo Zentloko.

Lingqinwe ngamawaka.
Umenzi walo kupelu ngu

J. JONES, Cape Town.

LINOKUTENGWA NAPINA

G. P PERKS NO NYANA

E QONCE,

YEYONA NDAWO YOKUTENGA Imisesane
yoku "Ngeja," Imisesane Yokutshata, Amacici Namehlo
(Spectacles).

KANANJALO XA UFUNA

UKUHLAZIYA. IWOTSHI.

MARKET SQUARE,

Kingwilliamstown

GREAT AFRICAN ORSMOND'S

PREPARATIONNS

The GREAT AFRICAN

REMED Y.

THE STANDARD DOMESTIC MEDICINE FOR FEVER &
AND COMPLAINTS OF THE HOME
Vido Pamphlet.

THE GREAT AFRICAN

For Eczema, Eruptions, Berae,
Syphilitic and Scrofulous

DISEASE BLOOD

Unrivaled Tonic
for FEMALES.

Specific for Kidney and Urinary Disorder. PURIFIER.

FOR

COLIC,
DIARRHEA,
DYSENTERY

GREAT AFRICAN
FRUIT PILLS.

For Liver, Stomach and Bowel
The Cure for
Piles and Constipation.
Are Mild and Effective.

THE GREAT AFRICAN

HERBAL OINTMENT.

For New and Old Sore, Skin Disease, Piles,
Rheumatism, Sprain.

Pains in Joints and Muscles.

Inflammatory Swelling

MEDICAL HALL

KING WILLIAM'S TOWN.

J. NEWING.

Umenzi Wempahla

(Ekoneni ye Maclean Square)
E QONCE

FUMANA IMPAPHA EZIPUMA NQO
KUBENZI BAZO.

Impahla ze Tweed Zamanene.

Impahla Zamadoda Zekodi neze
Krikete.

Intlobo ezintle kunene ze Printi
Nemichako ye Lokwe.

Impahla Yokwaka yentlobo zonke,
Ikofu ne Swekile, njalo-njalo.

Yonke into intsha, ilungile, itshipu—
Yizani kubona

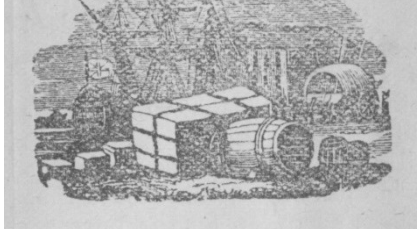
Imveliso yomhlaba itengwa
nge Cash ngamanani apqamileyo
e Malike. 6msfr18109

Abameli Micimbi

E. J BYRNE,
(ATTORNEY, ETC.)

UMTELELE-Ematyeleni, Umbali
Minqipiso yengqesho neyente-
ngiso mihlabala. Ukwya yi Arente ye
Gresham Life Assurance Society. No. S3,
Maclean Street.

E-QONCE.



Uboya! Uboya!

KATA!

SISANDULUKUFUMAN

A i odolo evela e Ngilani
ukuba Sitenge bonke

UBOYA BE NETEVU.

Zisani uboya ke nibone
ukuba asiroli awona
manani afanele yona.

W. O. CARTER & CO.,

MACLEAN SQUARE,

KING WILLIAMS

TOWN.

A. MELASS,

CHEMIST & DRUGGIST,
(UkangElene ne Ofisi Yamatyala.)

EKOMANI.

LAMAYEZA alandelayo Abantsu-

ndu, kwanawahleli enziwe kakade
entlobo zonke, bahleli benawo :—
AKA MELASS Amafuta Apilisayo,
ELIKA MELASS Lokumelama Amehlo.
AKA MELASS Incindi Yezinyo.
AKA MELASS Amatontsi Endlebe.
AKA MELASS Umciza ye Palo.
AKA MELASS Amatontsi e Stepu.
AKA MELASS Umciza ye Fiva.
AKA MELASS Umciza Wokohlukohlo.
AKA MELASS Umomelezi.
AKA MELASS Uhlukihla.
EZIKA MELASS Iphilisi Zoxaxazo-Gazi.
AKA MELASS Umciza Wesisu.
AKA MELASS Umciza Wegazi.

Amayeza ezifo ezikataza Abantwa-
bahleli benawo.

A. J. Cross & Co,

KING WILLIAMSTOWN

Esitsha Isaziso sika
TIKOLOSHE.

Kubaxhasi

Abantsundu!

A. J. Cross & Co.

Banga bangazisa Abahlobo babo
Abamnyama kuso sonke isi Qingata sase
Qonce, e Ngqushwa, nakwezinye eziraulayo
ukuba Base kwi
Sitora Sabo Kwigumbi le Marike.
Basaligcinile igama labo lokuba batengisa
ngamaxabiso angapantsi kwawazo zonke
ingamxale

APA E QONCE,

IPULUWA, ISALI, IHEMPE
IBHULUKWE, IBHATYI, INGUBO
NEZAMANKAZANA.

Umgubo, Ikofu, Iti, Iswekile—
ngazwinyo Into yonke
etyiwayo.

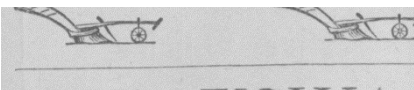
Basanika awona maxabiso nge
MGQOLOWA, UMBONA, nezinye
ntlobo zokutya.

A. J. Cross & Co.

ANNOUNCEMENT.

Terms of Subscription (by Post.)

-----s. d.
12 Months - - - 13 6
6 Months - - - 7 0
Deferred payments are charged for
t 4s. per Quarter.



KWAZISWA
UMZI OMELE ICALA

U KUBA Ivenkile ebhanjiswa ngu
MR. JOHN WILSON, isezandleni
ngoku zo

WM. SAVAGE 4 SONS

Abazimisele ukuwuguba umsebenzi
NGOHLOBO OLUPEZULU; kunjalo-nje
IZAKWANDISWA KWINTO E-BITYYO.

ISEBE * LAMAQABA

LAHLUKILE KANYE KWELABE

SIKOLO

tyali, I Printi, Ingubo zokuvata— Yinto
eninzi.

I-BLANKETE, AMAFELANE, AMABHAI
NEZIBHALALA.

Sinegama elidumileyo
kuyo yonke i Transkei nge
Blankete zetu kwane Zibhalala.

IMPAHLA

YOKUTSHATA:

Elisebe lipantsi kokulaula
kuka Mr. BATTERSHILL wetu
onamava amakulu ngeyona nto
kanye ifunekayo kwabalungi-
selela Imitshato. Ngoko imicimbi
epatiswe yona iyakwanelisa
kanyo.

INGUBO ZAMADODA:

Intlobo zonke zezitofu, ne
Twidi, Ibhathyi, Ibhulukwe—
ngazwinye into yonke
angayifunayo umntu.

W. SAVAGE & SONS.

U P. S. JEFFREY,

UNGA angabulela abatenga Evenkileni
zake ngobulele bokumxhisa kwixesha
eligqitileyo. Unqwenela ukwazisa

Umzi ose Kamastone nase Hewu
Ukuba ivenkile zake ezise

Kamastone, Didimana nase Donnybrook,

Zizele ngoku Yimpahla

YALO MCHEBO.

UYITENGISA NGAGQITISELEYO NGOBUPANTS
WONA AMAFANI EENGEMALI UMNUTI.

Eziketiweyo zona Ibhulukwe Za-
madoda—ezivulekileyo ezantsi.
Izihlangu zamadoda ezizitende zide
Izitofu—intlobo ezintsha.
Ityali Ezibuhlungu Zoboya—zama-
nkazana.
Intlobo ze Printi.

Yonke into etengiswa ngabantu itengwa
ngemali, ngamaxabiso anokufunyanwa nani.

Uboya Begusha nebokwe butuneka nu.

ZONKE IZIKWELITI ZALOMCEBO KUFU-
NEKA ZIHLULWE PAMBI KOKUPELA KWALO
NYAKA, okanye ziya kunikelwa kubaquki.

J. R. IRELAND,

Umaki Wezindlu Nontati we Kontreki,

Umcweli Kumasebe Okucwela Onke.

MARKET STREET,

Ki ng Williamstown.

UMENZI WEMPAHLA YEZIKOLO

YENTLOBO ZONKE.

I DESK EZINEZHILALO ZAZO,
EZENZIWE KAKUHLE NANGE-
NDLELA EMANGALISA YO NA-
NGAPEZU KWEZIVELA KWAMA-
NYE AMAZWE, NAMAXABISO
ANGANENO.

JESSE S. HONEY,

IARENTE NOMFANDESI,

Umxabiso Wakomkulu,

MACLEAR.

2185

N. MEYER,

inchibi Yentsimbi Zamaxesha, Imisesane,
nama Jikazi,

CAMBRIDGE ROAD, Kingwilliamstown;

Wonke umsebenzi endiwupatisiweyo
wenziswa msinyane ungowenene.

3/6 IBHOTILE.

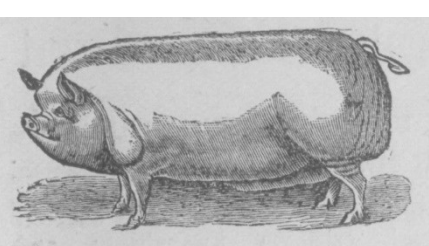
LENZIWA KUPELA NGU

H. J. DOBLE, Mayen

MACLEAN STREET,

(PAMBI KO BHANI),

E QONCE.



KWABAKUFUPI

,----NABAKUDE

(Ngokukodwa AMA TRANSPORT)

IMIXESHO YENYAMA

NE ZONKA,

NINOKUYIFUMANA KO

Smith & Gregg,

UMELENE NAMAGQUBA APA KATI

CAMBRIDGE || ROAD,

KING WILLIAMS TOWN.

J. LAMONT.

NKATULA! NKATULA!

UKUPELA kwevenkile e Komani apo
amafama anokuzifumaua zonke izinto
azifunayo.

U

J.L

Unga angacela amehlo ecelela imfumba
anazo ze Tyali, Blankete, Izibhalala, Ingubo
Zamadoda, Ihempe, Printi, Izihlangu, Tsali, i
—ngazwinye yonke into enokulangazelelwa
nguzi ontsundu, ngamaxabiso angazangana
awive ngapambili e Queenstown.

Ukuze uyinakane nawe into esiyenzayo
elifezekileyo ikuba 75 Eagle litengiswa nge
30/; Imixokelelwana yokutsala, yenkabi 10/
10/; Iswekile elungileyo emtubi 30/ nge
100lbs; ikofu 1/ ngeponti.

Kwakona unemfumba yengubo ezingono-
xehsa, zonke ngamaxabiso abaluleko ngobu-
panti. Lilo eli ixesha labahlobo betu
bangapande ukuba batenge.

IMVELISO.

Awona manani apezulu anokufunyanwa
ngo Boya, Izikumba, Imfele, ukudla,
njalo njalo, njalo njalo.

J. LAMONT,

Kwi Boloro yakwa Komani,
(QUEENSTOWN).

“UMGUBO KA KEATING.”

“UMGUBO KA KEATING.”

“UMGUBO KA KEATING.”

“UMGUBO KA KEATING.”

“UMGUBO KA KEATING.”

Lomgubo, unconywa kangaka, awulinga-
niswa nanto Kanje, ekufshabalaliseni, i
NLIKUTU, INTWAKUMBA, AMANU-
NDU, OOOHQOOTWANE, NAZO zonke
izilwanyana (elixa ungena ngozi kuzo
zonke izidalwa ezipileyo). Yonke imphahla
yoboya kwamemfele ezitambileyo
ezinoboya (furs) mazigalelwe lomgubo
pambi kokuba zabekwe. Oya ngasewandle
ma- kangawushyi. Ukunganda
ukudaniswa zamelani ukuba nalo “Mgubo
ka Keating.” Akuko wumbi umgubo
unomsebenzi ngapandle kwawo.

INTWAKUMBA.

UBULA LA I AMANUNDU,
OOHQOOTWANE,
UNGONGCONI.

Awugqitwa nto ekufshabalaliseni INTWA-
KUMBA, INCUKUTU, AMAPELA,
OOHQOOTWANE, AMANUNDU
kwi MPE, LE EZITAMBILEYO
EZNOBOYA, nakwezinye intlobo
zezilwanyana. Abahlali baya kuwufumana
unexabiso ekubaleni intwakumba
ezinjani, kwanamanekazi kwizinja zawo
azizanda kunene.

ULUNTU LUYAVUSWA ukuba
lukungela ukuba iziqhuma zowona inguwo
lo ingubo zibe zezi nesicamatiselo sika
THOMAS KEATING. Utengiswa nge
Nkonxa nange Bhotile kupela.

“Amaqakamba ka Keating Epalo.”

“Amaqakamba ka Keating Epalo.”

“Amaqakamba ka Keating Epalo.”

“Amaqakamba ka Keating Epalo.”

“Amaqakamba ka Keating Epalo.”

“Amaqakamba ka Keating Epalo.”

“Amaqakamba ka Keating Epalo.”

“Amaqakamba ka Keating Epalo.”

“Amaqakamba ka Keating Epalo.”

“Amaqakamba ka Keating Epalo.”

“Amaqakamba ka Keating Epalo.”

“Amaqakamba ka Keating Epalo.”

“Amaqakamba ka Keating Epalo.”

“Amaqakamba ka Keating Epalo.”

“Amaqakamba ka Keating Epalo.”

“Amaqakamba ka Keating Epalo.”

“Amaqakamba ka Keating Epalo.”

“Amaqakamba ka Keating Epalo.”

“Amaqakamba ka Keating Epalo.”

“Amaqakamba ka Keating Epalo.”

“Amaqakamba ka Keating Epalo.”

“Amaqakamba ka Keating Epalo.”

“Amaqakamba ka Keating Epalo.”

“Amaqakamba ka Keating Epalo.”

“Amaqakamba ka Keating Epalo.”

“Amaqakamba ka Keating Epalo.”

“Amaqakamba ka Keating Epalo.”

“Amaqakamba ka Keating Epalo.”

“Amaqakamba ka Keating Epalo.”

“Amaqakamba ka Keating Epalo.”

“Amaqakamba ka Keating Epalo.”

“Amaqakamba ka Keating Epalo.”

“Amaqakamba ka Keating Epalo.”

“Amaqakamba ka Keating Epalo.”

IZAZISO ZAKOMKULU.



ZISHICILELWA 'NGE 'GUNYA.

ISAZISO SAKOMKULU.—No. 20, 1891.

Kwi Ofisi lea Nocanda, E Kapa,
15 January, 1894.

NGEMIMISELO ye Siquendu II, Umteto

No. 15 ka 1887, kuyaziswa ngokubanzi ukuba
lemhlaba ilandelayo yakwa
Rulumeni, ekwi Siquingata sise Qonce, iya
kutengiswa efanadini eliya kuba pambi
kwe Ofisi yo Manti e QONCE, ngo 10
o'clock a.m. emnti, ngolwesi TATU, 21
MARCH, 1891, pantsi kwemigqaliso
neminipiso yo Mnto ongentla, nangezimi
selo zelifandesi ezibalulweyo, nezintati
lixelwe ngalomin yefandesi.

Isiziba ngasinye siya kutengisiwi ngemali
esixhonywe ngayo, waye ote wabhidla ngapezu
kwabanye, kananj do ngemali engengapantsi
koxhonywe ngayo, eyakuba ngowutengileyo
umntu ke lowokoba kokwake ukuyihlala yonke
ngaxanye nokuba yinxalenye yayo ngalomhla we
Fandesi. Ekoti ke

(i) Kungeko ntlawo ngalomhla wefandesi
isahlulo seshumi siroliwe ngenyanga
ezintandatu, ize esinye isahlulo seshumi
siroliwe kwinyanga ezilishumi linambini
ezilandela umhla wefandesi.

(ii) Ukuba imali ehlaulwe ngomhla we
fandesi ingapantsi kwesahlulo seshumi
sisalela sesahluko seshumi sohlawula
ekupeleni kwinyanga ezintandatu, ize
isahlulo seshumi esisalelelo siroliwe
kwinyanga ezilishumi linambini kususela
kumhla we fandesi.

(iii) Ukuba imali ehlaulwe ngomhla we
fandesi ipakati kwesahlulo seshumi
nesahlulo sesihlanu sihlulwe kwinyanga
ezilishumi linambini emva kwefandesi elo.

Inzala yezontlawo yoba ziponli zone ekulwini
ngonyaka; ekoti ukhululwa kwayo
nenzala leyo kuqin' adwe ngabameli abafe
zekileyo ababini ngokwaneliseka ko Mantiyi
— abameli abofika biziwopele kunye
ngabanye ukuba ngabo abanetyala, be-
ngena kuzilandulela nangantoni.

Indleko zoncanda, njalo njalo, natayitile
(12/6) zohlalwa ku Mantiyi, nakubani ongu-
wumbi owonikwa igunya loko kwangalomhla
wefandesi.

Unontanga lowo wofika abhale umnqopiso
ngezehlulo ezine nezihlanu cvuma ukuba
wohlalwa inzala—e-zipontsi ezine ngekulu,
angati ukuba wayerole ngomhla wefandesi
ngezulo kwesahlulo sesihlanu, acelewe.

Nzela umnqopisi isisalela semali yetengo
leyo. Unontanga woba nehngelo lokhululwa
lomini yonke mhlambini isahlulo
yalomnqopiso, kungengapantsi kwamashumi
omahlanu eponti.

Umfanekiso walemihlabla, kwakuny-
nezimiso zefandesi, zingabonwa kwi ofisi yo
Nocanda e Kapa, nakwi ofisi yo Mantiyi e
Qonce.

J. TEMPLER HORNE,
Unocanda Omkulu.

EMBO.

Isiqingata sase Matatiele.

Lot No 7546, isiziba somhlaba esikwisiqingata
sase Matatiele, ekutiwa yi Glenleary, ubukulu 803
imokolo 18 square rods. Ngasentla upele
ngodonga olungapakati lomlambo eli Tyinira,
square feet. Uxhonywe nge £1 10/, indleko
zocando £3 5/6, itaitile 12/3.

Lot No 7589 ongu Lot No 25, kufupi no mzana
wase Cumakala; ubukulu 283 square rods 67
square feet. Uxhonywe nge £1, indleko zocando
£3 5/6, itaitile 12/3.

<