

QUEENSTOWN ADVERTISEMENTS.

PEACOCK BROS. NO WEIR,

E KOMANI,

GABATENGI abakulu Bokutya, benika awona Manani alungileyo. E Komani apa wakuke uyekuva into abayi kupayo pambi kobuba utengise nokuba kupina.

Ihabile, Ezinkozo, Inqholowa, Irasi, Imbotyi, Lertyis, Umbona, Amazimba, bahlele benawo.

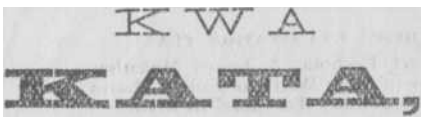
BEECHAMS PILLS

For Biliary and Nervous Disorders, such as Wind and Pain in the Stomach, Sick Headache, Giddiness, Fulness, and Swelling after meals, Dizziness and Drowsiness, Cold Chills, Flushings of Heat, Loss of Appetite, Shortness of Breath, Costiveness, Blisters on the Skin, Disturbed Sleep, Frightful Dreams, and all Nervous and Trembling Sensations, &c. THE FIRST DOSE WILL, GIVE RELIEF IN TWENTY MINUTES. This is no fiction. Every sufferer is earnestly invited to try one Box of these Pills, and they will be acknowledged to be "WORTH A GUINEA A BOX."

BEECHAM'S PILLS, taken as directed, will quickly restore females to complete health. They promptly remove any obstruction or irregularity of the system. For a

Weak Stomach; Impaired Digestion; Disordered Liver; they act like magic—a few doses will work wonders upon the Vital Organs; Strengthening the muscular System; restoring the long-lost Complexion; bringing back the keen edge of appetite, and arousing with the ROSEBUD or HEALTH the whole physical, ENERGY of the human frame. For throwing off fevers in hot climates they are specially renowned. These are "facts" admitted by thousands, in all classes of society and one of the best guarantees to the Nervous and Dabbling is that Beecham's Pills have the Largest Sale of any Patent Medicine in the world. Full directions with each box.

Prepared only by THOMAS BEECHAM, St. Helens, Lancashire, England. SOLD BY ALL DRUGGISTS IN THE COLONIES.



IYEZA LAMAHASHE.

CHAS. M. BONIFACE SMITH STREET, KING WILLIAMSTOWN.

Uneyeza ekungezekiyo ukuba lingalipili Ihashe eline Mibungu Nezilo. Unokutemela ngebhotile kotumele imali ngepepa le Posi, nengxelo yohlobo lokusetyenziswa.

Amafama awaka amtumela umbulelo ngekiye ngo Messrs. T. P. Phillipa, R. W. Curran, T. Christensen, A. Dudgeon, A. Christensen, E. Walsh, T. P. Edwards, namanye. QONDA—Eliyeza lizibhotile ezi 2, imigaliselo icazwe kumpepa ancanyatiselwe ngapandle. Ixabiso zi 6/-, nge Posi 8/-.

Kutengiswa

Tshipu:

ONGXAWU

ABA 2,000,

Kuqalela kwabancinane (1 gallon),

Kuse Kwabakulu (50 gallons).

Inkoliso inendawandawana, ngoko zitengiswa NGEHALAFU YEXABISO LAZO, (zitshipu).

YZA KUBONA.

W. O. CARTER & CO.

King Williamstown.

Amayeza ka Cook Abantsundu.

UMZI ontsundu ucelelwa ukuba ukangelise lamayeza abalulekileyo.

COOK Iyeza Lesisu Nokuxaxazo. 1/6 ibotile. Elika

COOK Iyeza Lokukohlela (Eingamafuta). 1/6 ibotile. Aka

COOK Amafuta Ezilonda Nokwekwe 9d. ibotile. Elika

COOK Iyeza Lepalo. 1/6 ibotile. Ezika

COOK Ipiis. 1/ ngebokisana. Eka

COOK Incindi Yezinyo. 6d. ngeboto. Oka

COOK Umciza Westepu Sabantswana. 6s ngeboto. Oka

COOK Umgutyana Wamehlo, 6/ ngesiqunyana. Oka

COOK Umciza we Cesine. 1/6. Niqondise ukuba igama ngu

G. E. COOK, Chemist,

E QONCE. uba ngawenkohliso angenalo igama lake

QONDANI

XABISO elirolelwa IMVO nge Kwata yi 3s. 6d.—Ifike ingekapeli lokwata irolelwa yona; xa ifike seyipeli 4s. Siya Ibabongoza abahlobo beta ukuba bazamele ukuhlala zingekapeli inyanga ezintatu. J. TENGO, JABAVU.

Incindi Epitikeziweyo

LINSEED NE

HOREHOUND.

Lelona Yeza le NKOHLOKOHLA INGQELE, nazo zonke Izikuhlanc zo MQALA no MIPUNGA.

1/6 NGEBHOTILE. 2/ LITUNYELWE_NGE POSI.

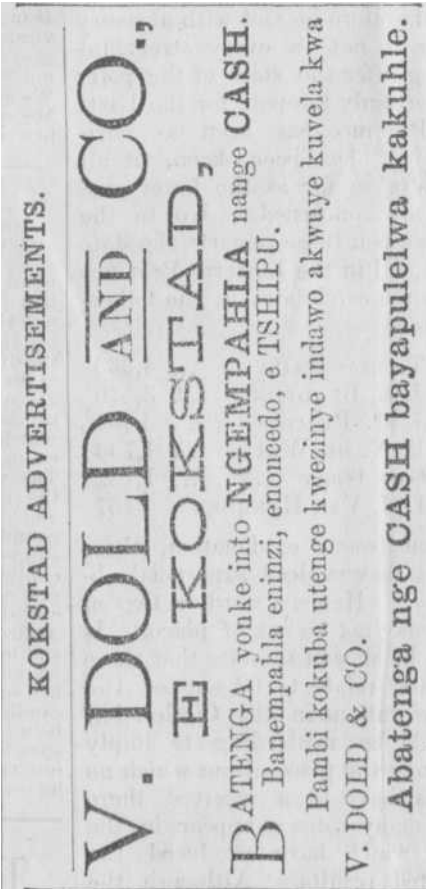
Ngamanani Nanganye kwa P. GRAY, Chemist and Druggist, CAMBRIDGE ROAD, KING WILLIAMS TOWN.

IS AZISO.

INTLANGANISO yokuchasa Isiko Lokwaluka, elisebe leyase Ncmera, yobako e Sheshu ngomhla we 6 MARCH, 1891. Yongena ngo 11 a.m. D. SIHAWU, Umbhali.

Kufunwa Kwangoku. TITSHALA one Certificate, wokufundisa e S. John Baptist's Mission, e Bolotwa. Abafunayo mabatumele kwangoku. Umvuzo ofanelikileyo uya kunikwa kumntu owaziyo umsebenzi.

M. A. MAGGS, Bolotwa, Imvani.



Abahlobo Babantsundu,

BESIWA BEVUKA NABANTSUNDU

1. KUQUALA

O HADNOTT & CO (Magqadaza) EYONA VENKILE INDALA E KOMANI YA BANTSUNDU, batengisa amalungelo aneliso ngelixesha lobunzima, bonke abanezikweli kubo ukuba ku June, 1890, ngokuti bavume ukutabata nokuba li 10s, endaweni yeponti, bangabizi nzala, kuzo zonke izikweli zabamnyama ezihlalulwe ngapambi ko December ozaayo, baze bamnike umntu ilasiti ene-stamp ngokufezekileyo.

2. KANJAQO

O HADNOTT and CO. (Magqadaza) batengisa kaze nemali, ngamaxabiso ahliswe nangokugqite abekuko, waye otenge kubo ngemali enzeliswa kangangokuba enze impinda yokuya kutenga kubo futufuti; ngalendlela zindimbane ezitenga kubo betsalwa luhlobo abantengisa ngalo ezitoren zabo apo abantsundu bafumana okwanelisayo ngemali yabo.

Apo nine Ledi, u Nottyebisa, ukunintengela estoreni, ne "Mvo" niyiselwe ngapandle kwexabiso.

HADNOTT & Co. (Magqadaza).

ISITIBA SOMZI ONTSUNDU, QUEENSTOWN.

ISEBENZA NGOBUGUQI

I-RHEUMATICURO!

IYEZA ELIKULU LASE SOUTH AFRICA.



Alikazo linqatyel we kupiliisa Izifo Zamatambo, Isinqe, ingqagqambo Zentloko. Lingqinwe ngamawaka. Umenzi walo kupela ngu

J. JONES, Cape Town.

LINOKUTENGWA NAPINA.



SAZISO KWA BANTSUNDU.

ZEKOMKULU LASE KAPA.

ZISHICILELWA NGE GUNYA.

NGOLWESI-NE, MARCH 1, 1891.

ISISHUMAYELO

NGU MHLEKAZI U SIR HENRY BROUGHAM LOCH.

Owe Ntshinga ye Knight Grand Cross, yodidi olubaluleke kunene lo St. Michael no St. George, Owamatshawe adume kunene e Bath, u Ruluneli no Mpati Oyintloko we Koloni yo Mntan' Omhle yase Cape of Good Hope, e South Africa, namazwana nezibhaxa zayo, ne Sandla so Mntan' Omhle, njalo-njalo.

KUBENI ngo Mtodo we 4 womnyaka we 1890, ekutiwa ngu Mtodo wo Bhalo, Nokubutwa kwe ngxelo ngonyaka we 1891, kumiselwe ukuba kwenziwe ingxelo, ngendlela emiselwe apo, yamanani abantu, nentlobo-ntlobo zempahla eshukumayo, kwanokuhlanganiswa kwamanani ezilimo, emfundo, emisebenzi yezandla, nezinye izinto kwi Koloni yase Kapa, kuqokwa na Mazwe ahlonelwe kwakulo Koloni, ngomhla otile kwinyanga engu APRIL, 1891, ongamiswa yi Ruluneli. Kekaloku ke mna, Ruluneli, ndiyashumayela, ndiyazisa, kanjalo ndityila okokuba ndimise, ndimisa nangokoku, ukuba i cawa umhla wesihlano ku APRIL, 1891, ngomhla oluyakwenzwa ngalo olo Bhalo.

Ndiyayalela bonke abantu bo Mntan' omhle, abakule Koloni kwanezi Bhaxa zayo ukuba babe ngabancedisi ku Mpati wo Bhalo, kuba Kangel, kuba Bhali kwanamanye amagosa apatiswe u Bhalo olo.

TIXO SIKELELA INKOSAZANA!

Sinikwe ngesandla sam nesincamatseto se Koloni ye Cape of Good Hope, ngomhla we 13th January, 1891.

HENRY LOCH, Iruluneli.

Ngomyalelo wo Mhlekezi e Bhungeni.

J. W. SAUER, Umpati-Koloni.

No. 25, 1891.

ISAZISO SIKI RULUMENTE,—NO. 48, 1891.

Kwi Office yo Mpati-Koloni, e Kapa, 13th January, 1891.

Ngamandla namagunya awatweswe nge Sigendu sesixenxe so Mtodo wo Bhalo, 1890 Umhlekezi i Ruluneli, ngecebo le Bhunga Elipeteyo, walatisa ukuba kuzo sonke izixeko idolopu, nemizana e Koloni apo kuko Amagqungula. apeteyo, umkangeli wo Bhalo uya kulevela indawo yokuba kushiywe amapepa o Bhalo, kwanzelatiso ezingemva kwalomapepa ngosuku olungapambili kolwe 5th April, 1891 kuzo zonke izindlu ezikulondawo awobona zifanele.

Abakangeli bo Bhalo baya gunyaziswa ukuba njengokubona kwabo benze ukuba amapepa o Bhalo olu ashiywe nokuba kukuzinina izindlu pakati kweziziqingata Zobhalo olo.

Xa ke amapepa lawo ate ashiywa endlwni, kuyimfanelo yomninindlu, okanye umgcini wayo, ukulibhala okanye enze ukuba libhalwe ngokozelayo, ngokuyinene, nangokulungileyo ngangoko azi ngako, okanye axelelwayo, okanye akoliweyo, lomapepa aba eshiywe kndlondu, abhale igama lake, aze awatumele. mhlambi awanikele ekubizweni kwawo, egqityiwe ngendlela-ndlelana zonke, ku Mbhali owabizayo.

Umbhali wofika ngo Mvulo, 6th April, 1891, mhlambi kwakamsinya emva koko, awabize amapepa abeshiywe ezindlwni, awoti ekuwamkeleni kwako awaqwalasele, azezelise ukuba abhalwe ngendlela na, awoti ukuba ufumana ukuba akenjiwanganjalo awazalise ngxelo anokuyifumana.

Apo sukuba umbhali engawashiyanga amapepa o Balo, umbali wovabhala ngokwake, ileyo indlu eyibhala kwiyepe layo elilodwa.

Ngendlu kutetwa isakiwo, umquba, inqwelo, inqwelana yamahasha, nayipina indawo apo kulala umntu, nasipina isikepe, nenqanawa engaba semazibukweni e Koloni yase Kapa.

Yimfanelo yomninindlu nomntu oiyepeteyo ukupendula kamsinyane, ngokuzelelo, nangokulungeleleneyo yanke imibuzo engabuzwa ngumbhali.

AMATYALA.

Umnini-ndlu, nomntu ongaba usele nayo oke wamangala, okanye oke akakatala ukuzalisa, umhlambi ukubeka igama lake, umhlambi ukunikela amapepa o Bhalo kumbali; nongati okanye asuke amangale, mhlambi angakatali kupendula, okanye asuke axoke ekupenduleni, okanye axele ubuxoki okanye enze ukuba kuxelwe ubuxoki, nongatintela nalipina igosa lo Bhalo ekwenzeni umsebenzi walo, angadliwa iponti zontlanu zemali, angati engenazo abe nokufakwa entolongweni esebenza mhlambeni engasabeni nzima ixesha elingangapuzulu kwenyanga, de abe uluhlulelw kwakamsinyane.

Kweso sohlwayo aqakawwa umntu oyakuti ngexa yento azoyikelayo asuke ashiye umhlambi amangale ukuxela unqulo lwake, angati ukutyebisa ezo zoyikelo zake sehlbala kumqolo olungiselelo oke welizwi eliti " Object." Kananjalo eso sohlwayo asiye kubekwa kumntu ongati ngenani lemfuyo yake engalazi ngokute ngo, asuke enze umlungano nje omalunga nyanisano.

Nalipina igosa lo Bhalo elingafika libhengeze into zo Bhalo olo liya ktidliwa iponti ezintlanu (E5), liti lingenazo lifakwe entolongweni ixesha elingapezu kwenyanga.

J. W. SAUER, Umpati-Koloni.

ISAZISO SIKI RULUMENTE.—NO. 49, 1891.

Kwi Ofisi yo Mpatiswa Koloni, e Kapa, 13th January, 1891.

U BHALO, 1891.

NGAMANDLA namagunya endiwatweswe ngezimiselo ze Sigendu sesi 6 so Mtodo wo Bhalo, 1890. Umhlekezi i Ruluneli ngecebo le Bhunga Elipeteyo, uyalatisa ukuba zonke incwadi nemiqulu, nezizithishi ngocingo ezingalo Mtodo, zitunyelwe nge Posi nange ngcingo kule Koloni yase Kapa, kuqokwa nezi Bhaxa zayo, ezivela nezinye ku Mpati we Koloni, kwanakuye nawupina Umkangeli lu Bhalo no M'bali, ukuba zinopawu ngapandle olu lu "Bhala" (Census), zontunyelwa ze de kube lusuku lwama 31 ku December, 1891.

J. W SAUER, Umpati-Koloni.

ISISHUMAYELO

NGU MHLEKAZI U SIR HENRY BROUGHAM LOCH.

Owe Ntshinga ye Knight Grand Cross, yodidi olubaluleke kunene lo St. Michael no St. George, Owamatshawe adume kunene e Bath, nu Ruluneli no Mpati Oyintloko we Koloni yo Mntan' Omhle ye Cape of Good Hope, e South Africa, namazwana nezibhaxa zayo, ne Sandla so Mntan' Omhle, njalo njalo.

TIXO SIKELELA INKOSAZANA!

Sinikwe ngesandla sam ne sincamatseto se Koloni ye Cape of Good Hope, ngomhla we 24 December, 1890.

HENRY B. LOCH,

Iruluneli.

Ngomyalelo wo Mhlekezi e Bhungeni. P. H. FAURE,

No. 328, 1890, _ _

E KUBENI ngezi Shumayelo ezingo Nos.

209 no 308, zo 18th September no 8th December 1890 ngokulandelelana, Imiteto etile yama Hlati, ebingeniswe kumazwe ase Transkei, elase Mbo, elaba Tembu, nelaba Tembu base Rode, elama Gealeka, elama Bomvana, ne Cweba lo Mzimvubu; nasekabenzi ngesiqendu sesi 4 salomiteto abantsu.

ndu abakulomazwe betweswe amalungelo atile, kananjalo ekubeni kufuneka ukuba amalungelo lawo abe kupela kulomahlali akulomhlaba bawumiyi : Kekaloku ke ngoko mna, Ruluneli ngamagunya endiwikiweyo ndiyashumayela, ndixela, ndisazisa okokuba lomalungelo atweswe ngesiqendu sesi 4 salomiteto yama Hlati ayakuma

ngolohlobo axeliweyo kulomazwe ase Trans, kei, elase Mbo, elaba Tembu, elaba Tembu base Rode, elakwa Gealeka, elakwa Bomva, na, ne Cweba lo Mzimvubu kususela kumhla wo 1st January 1891.

Kananjalo ekubeni kufanele ukuba ixabiso Lomtati, obumiselwe nge Sigendu se 3 salomiteto ukuba yi 1s. ngonyawo lobudo, ububanzi, nokujikeleza, litotywe maxa wambi: kaloku, ke ngoko mna, Ruluneli ndiyashumayela, ndixela, ndisazisa okokuba

Bontha, Miss S. C. il iwe, L. Dabuka, E. Goba, W. George, S. Jaffa, M. Komijana, T. Koboka, E. B. Mzana, N. M. Mancapa, N. Mpunga, Mrs N. Ngxopa, N. Rigala, Mr. Siensana, B. Tutana, J. Umkululie, B. Xotyeni, E. Y.

J. HALLOCK, Postmaster.

EDWARD T. JONES,

(Obefudula ekwa Attorney R. W. ROSE-INNES.)

UNGU MTETELI-MATYALA,

Umbhali we Mvumelwano, no Mguquili-Magama Elatitile.

E KOKSTAD,

EAST GRIQUALAND.

AMAYEZA

ADUME KUNENE KA

JESSE SHAW (U-Nogqala),

E-BHOFOLO.

Enziwa ngemiti ekula apa South Africa kuqala.

L-AMAYEZA aya yalezwa kakulu ngumniwo, ngexxa yoku ngqinelana kwawo nezoz zifo ezizela zona; ngexxa yoku kulelwa uku nceda noku ngawenzakalisi unzimba; ngexxa yoku banti besabisi lawo; ngexxa yokucekela ekwenziweni kwawo; ngexxa yokungabina seteyu; ngexxa yoku enziwe ngemifuno enginqinwayo ukuba ingamayeza.

UMPILISI WENENE (The Sure Cure). Umciza onganze ungakupili ukuluma kwe nyoka, nezinye inuntu.

UM-AFRIKA (Africanum). Umciza ongenzi xesha ukukupili Izinyo.

UMFUNO 'YEZA (Herbal Tincture). Elingoyiswayo zingqangambo zendlebe, neze bunzi, nokubeta kwentoko nyoko.

UMHLAMBI 'LISO (Eye Lotion). Oyena mpilisi wamehlo abulafayo.

UMGEDDI ORARAYO (Herbal Alkaline Aperient). Eliqinisckileyo ukunceda ukunganyi Ngasese, ukungatandi kudla, licesine nento ezinjalo.

UHLIKHILA (Embrocation). Amafuta omi okupili ukuqagamba komzimba, Ukuti-Nqi kwa malungu ukuxazaka, njalo, njalo.

UMDAMBISI (Soother). Amafuta omi okupili ukutsha, ukutyabuka, ezinye.

UMNCWANE WESHLAHLA (Confection of Rhubarb). Incindi yoku gada iziswana ezizakatayo zentsana, nesabantwana.

UMATINTELA (Antispasmodic). Umciza, wokupili ukuqunjelwa nezipepe nezinye inkatazo.

UMOMELEZI WASE INDIYA (Indian Tonic). Iyeza elijunge kunene kwizifo zokuba batataka, nokungatandi ntu itiywayo.

UBUGQI (Magic Healer). Amafuta ukupili msinyane ukusuka nezilonda njalo njalo.

IGUDISA (Emollient). Into elunge kunene etanjiswayo ebona bubebuhle bugude ubuso.

UMGUTYANA (The Powder). Lisetyenziswa neli kutwina " Lelona " xa isifo sokunamba igazi sendlele.

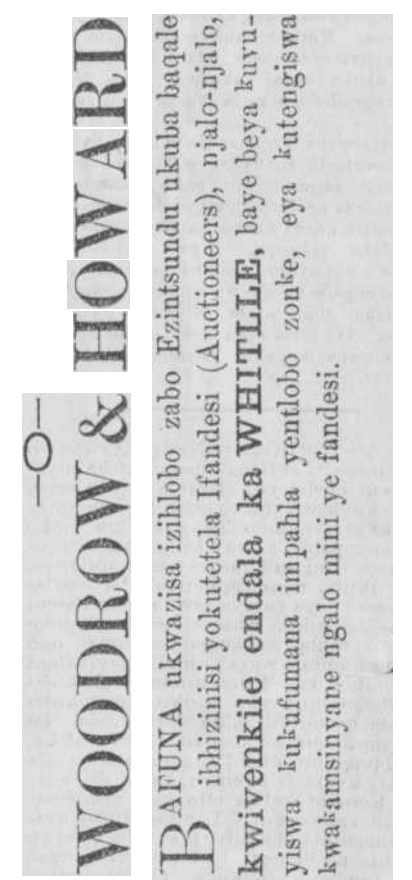
Izalatiso zendlela yoku wasebenzisa zishicilelwe nokuzalisekileyo zatwina nca kwi bhotalana nezitofilana ngazinye, eziti zakulandela ngokufezekileyo akaze angapili lamayeza. Ngekungabiko kuya, nandlu, namhambi ungenayo lamayeza esirweqe sokutimela okungekhele.

Akanwa onzwa ngu JESSE SHAW, Iqira elisebenza ngemiza, e Bhofo, atengiswa nguye nge bhokisi nange Bhotile nangamagosa ake kwinkoliso yedolopu zale Koloni yonke, o Natal, e Free State, e Transval, nase Indiya.

AMAGOSA ALAMAYEZA.—D. Drummond A Co. E. Ngqamane—Mrs. Savage. E. Mont—B. G. Lennon & Co. E. Rini-E. Wells. E. Dikani—R. Stocks. E. Komani—Mager & Marsh. E. Bhuvi—B. G. Lennon & Co. E. Ngqusha—W. A. Young, E. q. Ikaya lawo e Fort Beaufort kwa Nogqala.

ISAZISO

UMR. R. W. ROSE-INNES, Umteleteli. Ematyaleni, njalo-njalo, uyasuwaba umsebenzi wake kwanjengokwagapambili. Ngumninawo wakule, u Mr. C. Rope-Innes, ongu Mteteli enkundleni yase Monti, E Ofisini yake e Concessio namahlala usakunyamekele ukukangelela Imicimbi yaba Ntsundu ngononolelo lonke.



UNYAMEKO KWA BAMNYAMA

UKUTETELA Amatyala, Imicimbi Yemihlaba, Ukubhala Iminqopiso Iwenziswa ngo

HOWARD & WEBB,

Emva kwe Zitola zo BAKER, BAKER & CO.

E-QONCE

Printed for the Proprietor, J. TENGO-JABAVU, by HAY BROTHERS, Smith Street, King Williamstown.

INDAWO.	BAILEY.	BRADFIELD.	DE WET.	GRAY.	PEACOCK.	VAN HEERDEN.
KINGWILLIAMSTOWN :						
The Town	900	196	1,967	1,257	4,182	603
Piekenari	31	68	99	77	20	7
Izeleni	18	7	25	15	7	7
Blancy	18	7	25	15	7	7
Ekumeni	18	7	25	15	7	7
Rerini	18	7	25	15	7	7
Mintfontein	37	7	44	151	86	...
Stutterheim	134	43	177	27	130	...
Kerkfontein	134	43	177	27	130	...
Rahla	4	2	6	3	69	...
Debe Nek	113	10
Green River	63
Frankfort	156	1	6	51	5	...
Barnhill	12	27	81	...
Middledrift	13	10	20	...
Iqibra	10	1	3	...	72	...
Kei Road	71	18
Tvume	30	16	13	...
Bolo	64	18	5	...
Ntsikizini	...	10	11	...
Wetherun	5
Komgha	...	5	...	60
Warburz	1	130	...
Izidense	56	35	...
Emswali	3	37	...	21	85	...
EAST LONDON:						
West and East Bank	900	73	6	17	479	...
Cambridge	30
Fort Jackson	63
Maclean	39	4	...
QUEENSTOWN :						
Town	357	67	73	8	379	9
Sterkström	50	...	11	...	5	130
Tarkastnd	232	3	29	145
Qooodala	11	138	1	...	73	...
Kamastone	7	199	109	...
Oeneenspark	42	1	...	2	4	10
Whitfreesa	63	70	44	5	73	147
Imvani	2	21
Thomas River	31	5	...	5	36	...
Wacu	7	5
Cathcar	44	20	22	130	7	...
Lessevton	44	20	22	130	7	...
Oxton	9	42	31	...
Hackney	4	143
Driversdrift	6	150	9	1	149	2
Bolotwa	2	21	49	...
Baileyton	44	...	3	55
Kleinfontein	18	...	18	33
Owebeqwebe	31	...	68	...	36	...
Schaffhauser	7	5	...	58	8	...
WODEHOUSE:						
Dordrecht and Grootvly	47	469	143	2	44	12
Barkly East	39	41	146
Lady Frere	57	319	19	17	176	...
All Wards (five not in)	11	306	105	2	105	54
Bnfeldooms	39	106	207	...
TEMBULAND:						
Umtata	26	5	3	100	70	...
Butterworth	...	18	...	18	48	...
Idutywa	13	...	4	9	22	...
Cala	70	208	95	2
Askeaton	...	143	83	2
EAST GRIQUALAND						
Kokstad and Umzimkulu	115	152	161	40
Matatiele	...	135	65	1
Mount Frere	...	30	...	51	30	...
Mount Avliff and Qumbu	78	13	...	3	24	...
ALIWAL NORTH :						
Town	7	65	320	...	27	...
Herschel	...	357	14
Bensonyale	...	451	7	...
Palmetfontein and Aliwal	3	164	590	2	1	...
Wards except New England.	3	28	41	...	3	...
Jamestown
TOTAL	4,373	4,411	1,967	1,257	4,182	603

INDAWO.	BAILEY.	BRADFIELD.	DE WET.	GRAY.	PEACOCK.	VAN HEERDEN.
KINGWILLIAMSTOWN :						
The Town	900	196	1,967	1,257	4,182	603
Piekenari	31	68	99	77	20	7
Izeleni	18	7	25	15	7	7
Blancy	18	7	25	15	7	7
Ekumeni	18	7	25	15	7	7
Rerini	18	7	25	15	7	7
Mintfontein	37	7	44	151	86	...
Stutterheim	134	43	177	27	130	...
Kerkfontein	134	43	177	27	130	...
Rahla	4	2	6	3	69	...
Debe Nek	113	10
Green River	63
Frankfort	156	1	6	51	5	...
Barnhill	12	27	81	...
Middledrift	13	10	20	...
Iqibra	10	1	3	...	72	...
Kei Road	71	18
Tvume	30	16	13	...
Bolo	64	18	5	...
Ntsikizini	...	10	11	...
Wetherun	5
Komgha	...	5	...	60
Warburz	1	130	...
Izidense	56	35	...
Emswali	3	37	...	21	85	...
EAST LONDON:						
West and East Bank	900	73	6	17	479	...
Cambridge	30
Fort Jackson	63
Maclean	39	4	...
QUEENSTOWN :						
Town	357	67	73	8	379	9
Sterkström	50	...	11	...	5	130
Tarkastnd	232	3	29	145
Qooodala	11	138	1	...	73	...
Kamastone	7	199	109	...
Oeneenspark	42	1	...	2	4	10
Whitfreesa	63	70	44	5	73	147
Imvani	2	21
Thomas River	31	5	...	5	36	...
Wacu	7	5
Cathcar	44	20	22	130	7	...
Lessevton	44	20	22	130	7	...
Oxton	9	42	31	...
Hackney	4	143
Driversdrift	6	150	9	1	149	2
Bolotwa	2	21	49	...
Baileyton	44	...	3	55
Kleinfontein	18	...	18	33
Owebeqwebe	31	...	68	...	36	...
Schaffhauser	7	5	...	58	8	...
WODEHOUSE:						
Dordrecht and Grootvly	47	469	143	2	44	12
Barkly East	39	41	146
Lady Frere	57	319	19	17	176	...
All Wards (five not in)	11	306	105	2	105	54
Bnfeldooms	39	106	207	...
TEMBULAND:						
Umtata	26	5	3	100	70	...
Butterworth	...	18	...	18	48	...
Idutywa	13	...	4	9	22	...
Cala	70	208	95	2
Askeaton	...	143	83	2
EAST GRIQUALAND						
Kokstad and Umzimkulu	115	152	161	40
Matatiele	...	135	65	1
Mount Frere	...	30	...	51	30	...
Mount Avliff and Qumbu	78	13	...	3	24	...
ALIWAL NORTH :						
Town	7	65	320	...	27	...
Herschel	...	357	14
Bensonyale	...	451	7	...
Palmetfontein and Aliwal	3	164	590	2	1	...
Wards except New England.	3	28	41	...	3	...
Jamestown
TOTAL	4,373	4,411	1,967	1,257	4,182	603

AMAZANTSIPUMALANGA

Ngangoko besefizikile ingxelo zo Mjikelo wa Mazantsi e Mpumalanga abemi ngoluhlobo amanani:—Wilmot, 4013; Brister, 3800; Dolley, 3598; Bellingan, 2018.

AMANTLA EMPUMALANGA.

Kumjikelo wa Mantla e Mpumalanga amanani ukuza kolwayizolo (5th March) abemi ngoluhlobo :—Sir H. Stockenström 3818; D. P. van den Heever 1166 ; F. F. Wienand 1273; Michau 898.

KUFUNYENWE

KUFUNYENWE ngaleveki ipelileyo kufupi ne Durban inamba izilele amatole emashumi mane anane.

KUFUNWA.

ITSHALA enesimilo esihle, elikolwa, ke e yafundisa, e Matatiele. Kubhalelwa kogama lingezantsi eya kutunyelwa kuye incwadi yesimilo. REV. PAULUS SEPAMLA. Matatiele, East Griqualand.

Bonisani Amahashe!

KULAHLEKE apa Emjanyana amahashe amabini nge 20 January, 1891. Amabala awo: Yiponi EGWANGQA etc cupu ngebala elimhlope kowe kohlo umlenze, lite boto ezinxaleneni kudliwa yisali, alinamabamba ngezantsi, itshoba ke lanqunyulwa nesinchi, liyahluhla kodwa ngoku. Enye Yiponi emfushane EBOMVU, ine balana lincinane ebunzi, okwangoku itshoba linqunyulwa esikondweni. Ote wawabona wotumela ku DINNA DLANGA umninno, nokuba koku SOL, NTIKINCA, Emjanyana, wovuzwa umntu lowo kakhnle. 31st/23

Iveki.

IRULUNELI U Sir Henry Loch no Mr. Rhodes bevelwe esidlweni yi Nkosazana ngolwesi Bini lwegqitileyo.

NGXELO yimbi engokuzo ku Mpatiswa-Koloni, n Hon. J. W. Sauer, M.L.A., yeyokuba angafika kweli mayelana no 14 March. Akakasimleli ngokute nqi ukuzasiza usuku lokuza kwake.

NGOBUSUKU bo Mvulo ongapaya (23 Feb.) bekuko intlanganisayo yabamhlope base Kimberley elandelwe lungcebho lwabepete ezibane ezizangazelayo, ukuvakalisa uluvo lonto lokuza kuvulwe umhlaba oyi Wesselton uvulelwa ukuba kumbiwe idayimani.

U JUSTICE GREGOKOWSKI wamatyala ase ; Free State usahambela e England okwenganya ezintandatu.

KUNCONYWA inani lamatyaye angabileyo afunyenwe e Hebron ngezantsu, elinye leli carats z 107.

NGOLWESI Tatu lwegqitileyo kubhukuqe itroko kaloliwe e Naauwport inamahashe amahle abevela e Bloemfontein esiya e Bhai; kwenzakala amane.

ISTANDATU samadoda—amatatu ngabelungu—siwe e Durban sibe sisaka sapuka indawandawana.

IMVO ZABANTSUNDU (NATIVE OPINION)

okubucala kokwetu. Ayimandla mani ke kuti lendawo.

Apo ikona intloko yalento kukwindawo yokuba yayiyiqonda kakuhle na intlanganis indawo yokuba ngokuyinikela ikomiti lento yayiseyizitunga yona umlomo. Ukuba kwaye kunjalo uninzi aluyinakananga. Luyamkele ikomiti ngendlela yokuba, njenge nqubo ye komiti kakade, iyakubekuba pambi kwentlanganisno ukuhluzwa kwayo ukuze yona yamkele okanye ingamkeli. Yiyo lonto oka SISHUBA intawo ukuba ikomiti iyokugqiba intlanganisno ichitakele kuba ingati ingabuyi no MR. ROGERS; abavume apo ke abaninzi ukuba mayihlale iko nje intlanganisno ukwenzela ukuba ze silungiswe isigqibo sayo ukuba ibonile intlanganisno ukuba asisiso sokuyinceda. Saye tina singazange sayiya into yokuba ikomiti inokugqiba apo intlanganisno ingakolwayo, ize intlanganisno ibotshwe seso sigqibo.

Umzi mauqonde umzi awubhenelanga sigqibo *santlanganisno* (esikolwayo ubuyakusilulamela) ; kodwa umangala ukuba *ikomiti* inikwe isihlahla sentlanganisno. Gqibe ke. Sicela amadoda anamava ukuba agwebwe pakati kwalamacala awahlulelana kwa Ndllovukazi.

AMANANI EVOTI.

KOMNYE umhlati abafundi betu baya kufumana ingxelo zevoti ngangoko zaziwayo ukuzwa kwixhesha lokushicilela. Lamanani alata ukuba u Mr. BAILEY ubhushlisile ngevoti kwihlelo lase Mangesini ngokukodwa kwimimandla ye Monti ne Qonce, inani lake liku 4,453. Ufumene amanani amakulu konongqayi aba kutiwa zi C.M.R. kuzo zonce indawo akuzo asuke angcamba ukuya kumgalelela zontatu. Kube kubi ukufumana ukuba u Mr. PEACOCK, osafumene 4,257, um'pepile umzi omhlope — ababangoko kuye kangokuba sibe silindele; esingazi nokokuba kukuba ebenga zanyelwa njengo Mr BAILEY na kokawobabo umzi. U Mr. BRADFIELD, nakuba elake inani kuma Ngesi lingengangelika Mr. PEACOCK, uze ekusondeleni konyulo wafumana abaxhasi abamhlope abengabalindele, ngakumbi e Qonce. Inani lake lingapezulu kwelika Mr. PEACOCK, kuba liseliku 4,408; kanti kwindawo ezingekafiki. ngokukodwa ezamawetu unikwa ngambini, apo anikwa nye u Mr. PEACOCK. Ibhulu u Mr. DE WET liyalandela. Yena une 1,984, waye engasemva ku Mr. PEACOCK ngevoti ezi 2,273. Akulindelwe kwindawo ezimaneni angekafiki ukuba uyakuba safikelela kulamalungu matatu, kuba ema Dodorolo nase Xalanga ababaninzi abavoti kangangokuba bamnyuse ; kanti o Messrs. PEACOCK no Mr. BRADFIELD basasinga pambili, azikaziwa ezase St. Marks, noma Ngcobo; ama Tsomo noma Ngqamakwe nezinye izipalukana pesheya kwe Nciba eziya kukanyaka u Mr. PEACOCK no Mr. BRADFIELD. Akusalindelwe manani makulu ku Mr. BAILEY njengokuba kulindelwe ngo Mr. BRADFIELD no Mr. PEACOCK ekubonakalayo ukuba amanene amabini obujonge kuwo umzi ontsundu aya kungena. Lamanani afundisa ukuba bekesamlinga u Mr. ROGERS bekuyakuba njengokuba saprofetayo kwamandulo.

U MR. ROGERS.

UMR. ROGERS uwuncedile umzi ngokuroxa kuvoto lwase Mpumalanga. Ngesisendo yya kuzitimba okunye intiziyi zamawetu. Siyambulela simncoma ngenxa enaso. Kubekufuneka kungenwe kakulu evotini ukuze kwakuvula ituba angeniswe nokuba kukupisina isitili esinamawetu anokumweza.

Impawana.

Abuqondwa kakuhle utywala bo Mxhosa ngabamhlope—ukuba buyanxilisa abunxilisa kusinina. Bufunyenwe e Bhai lipela lakona ukuba buyanxilisa. Kuti kutinjwe izitya ezinabo kwindlu eyenza umqomboti ngenye

Imvo Zabantsundu

(NATIVE OPINION)

Lirolelwa 3/6 nge Kwata
(itunywe ingekapeli) 4s ipela i
Kwata ingarolwanga.
Unokuhlalelwa wonke Unyaka
ekuveleni kwawo ngo 13s 6d.

Izaziso Zabazelweyo,
Abatshatshileyo, Nemibiko,
irolelwa 2s 6d. zingene kanye ;
3s 9d kabini; 5s katatu.

ELIPEPA LIPUMA
NGOLWESI-NE

IVEKI ZONKE.

Lijonge Ilungelo Lomzi
kupela.
Limele imfanelo ya Bantsundu
ngapandle koloyiko.
Alicaluli Sizwe nalu Nqulo.

Authorized Medium for the Publication of Government Notices addressed to Natives throughout the Colony and the Territories.

IXABISO 3d.]

KING WILLIAMS TOWN, NGOLWESI-NE, MARCH 5, 1891.

KING WILLIAMS TOWN ADVERTISEMENT. [No. 331]

QUEEN'S TOWN ADVERTISEMENT
UMGUBO WE DIPU YE GUSHA OMTSHA.
ingatinina ukuzingenisa emngcipikweni we Dipu ezine Tyefu? Akuko mfuneko.

UQINISELWE NGENCWADI ZAKOMKULU, 1890.



Umgubo we Dipu Ongenatyefu,

UTSHABALALISA IBHULA NEZINYE IZILWANYANA

Ezizusheni, ezinkomeni, emahasheni, ezibhokweni, ezinjani, ezintakeni
zasekaya, njalo-njalo.

Ulelona yeza le Bhula.
Utshabalalisa zonke izilwanyana kuyo yonko into Ehamhayo.
Usindisa kwi mbuzane zentlobo zonke.
Uphilisa zonke izilonda namanxeba.
Uhlumisa uboya kakuhle.
Ulungisa kakuhle ngapandle kwengozi.

Awunayo kanye ingozi nomanakalo obangwa kuhlamba ngamayeza anetyefu.

AWUNANGOZI KANYE. AWUNATYEFU KANYE.

GQALA.—Awunangozi kumntu nakwi ramnwa, ; ukuba kune imvula emva
kokuhlunjwa, okanye kokusetyenziswa kwawo, akuko tyefu ingawela
emadlweni.

Ukwiziquma za 20 e gallons zamanzi kwi Gusha ezi 25.

LONDON: 10, MARK LANE.

McDougall Bros.

NEW YORK, MELBOURNE,
AND BUENOS AYRES.

YIYA KO

PEACOCK BROS, and WEIR,

KING WILLIAMSTOWN.

Unokutengwa nakuyipina Ivenkile yelase Maxhoseni nase Mbo.

DYER AND DYER
IMPAHLA EZINTSHA,

(Ngo Stemele bonke).

Ibhulukwe zamadoda ze Flannel emhlope ziqalela kwi 7s. 6d. nge par.

Ibhatyi	Zelanga zelinene	7s. inye.
Ibhulukwe		5s. nge par.
Ibhatyi	Zehlobo ze Holland	4s. 6d. inye.
Ihempe	zo Tennis	2s. inye.
Ihempe	Ezimhlope	3s. inye.
Ihempe	Zokusebenza	

IMINQWAZI YOBOYA, IMINQWAZI YE STROYI, IMINQWAZI YE
STOFU, -Intlobo-ntlobo-yamanani onke.

Zonke intlobo zengubo Zamakwenkwe, Zabafana, nezamadoda.
Ibhulukwe zekodi ezisikiweyo ziqalela kwi 6/6 nge par.
Impahla Entsha, Amapini, Ibholo, ne Net ze Tennis ezisand' ukwamkelwa.

IMPAHLA YE BHOLA

IBATI, IBHOLA, IZINTI,—EZONA ZITSHIPU E KOLONI,—ZININZI ZENZIWE
NGABONA BENZI.

GQALA.—I Club zitengiselwa ngamanani elungelo.

Isuti zamadoda ezisikiweyo ziqalela ku 50s.

(Iziziba nento zokuzimelela, zinikwa ngesisa kozifunayo).

Intlobo ezihleliweyo zokucitshwa, ze Zitofu, ze
Diagonal, ze Serj, Zetitofu ezitofotofu, ze Kodi.
Umsebenzi, uhlobo, kwanokummila umntu—
Kungabekelwana ngako.

IVENKILE ETSHIPU E KOLONI.

DYER NO DYER,

KING WILLIAMS TOWN.

f2310

Inyama ne Zonka,

Nento ezinjenge kofu ne swekile zitengeni ko

E Nyutawini nakwisitalato esipambi
kwe ofisi ngase mcantcatweni.

Beauchamp, Booth Co.

(EBIYEKA J. J. IRVINE & CO.)

Ivenkile YE MPAHLA EZIBUHLUNGU
NGAMAXABISO ANGATSHIPU.

ITYALI—Zintle kodwa ziyalahlwa, ziqala kweze 4/6 to
£2 inye.

I PRINTI ezi "best" ezihlanjwayo 6d. yard.
Edluliseleyo itshipu i Satin Emhlope ne Cream
i Muslin yokunxiba enemigca 4 1/2 d. yard.

I Satin Ezimhlope nezi Cream, 10 1/2 d., 1/-, 1/6 nge
yard.

Ingubo Zabatskakazi ezenziwa nge zintsha ifashini.

Iflawa Zabatskakazi. Izigubungelo Zabatskakazi.

Ingubo Zokutshata Zamadoda, Izitofu zokwenza
Ibhulukwe Zokutshata Ziyasikwa.

Ibhatyi Ezimnyama ezi "best" Zetwidi.
Yizani kuzibonela ezimpahla ngokwenu.
Ngapambi kokuba nitenge napina
yiyani ko

BEAUCHAMP, BOOTH & CO.

E-QONCE, KINGWILLIAMSTOWN.
AMAFANDESI KA J. D. ELLIS.

UMTETELI FANDESI u ELLIS utengisa e Qonce yonke imihla emva kwe Malike
yakusasa—ngo Mgqibelo kuhlala kuko Impahla yokufuya etengisayo.

Amafandesi ake Empahla Ehambayo abako

E-MTONJENI, KEI ROAD ngolwesi-TATU lwesibini ezinyanga zonke.
E-TOLENI (DOHNE) E CUMAKALA ngolwesi-TATU lwesine zonke
inyanga.

Kuyo yomibini lemisito Abatengayo banokufumana
Igusha ne Nkomo.

Bonke abezisa impahla yabo kuye ukuba ayitengise bangahlala besazi
ukuba baya kufumana awona maxabiso
alungileyo.

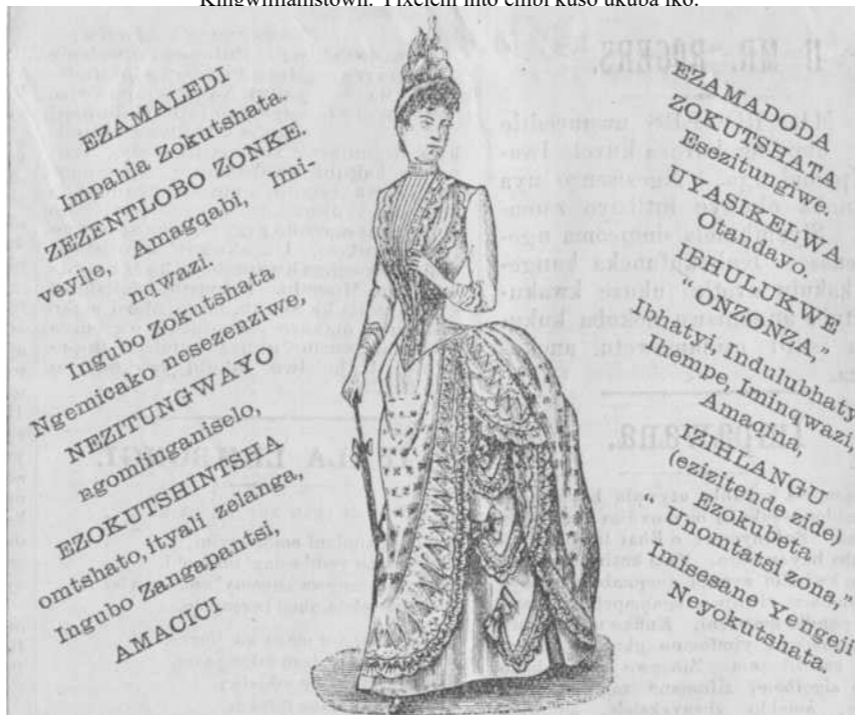
Kobhalelayo : J. D. ELLIS, Auctioneer,
Kingwilliamstown.

KWABAZAKUTSHATA

K HANIBAS' AMEHLA APAL
Ntini ngesivato Somshato estungwe kwa

PASCOE (kwa "FOLOKOCO,")

Kinewilliamstown. Yixeleni into embi kuso ukuba iko.



ITYALI ZETU-UYEVA? ESPECIALLY ezabatshakazi. Ngalibali PASCOE (kwa
Folokoco), ngezantsi kwetyalike ye Zikotshi, e Qonce, apo nom'bona kona SALUFU.

LADY FRERE ADVERTISEMENTS.

J. W. GARRETT & CO

LADY FRERE

Ingubo Zamaledi, Iswekile Nekofu, nento zalowomkondo, Izihlangu, Ingubo
Zamadoda, Isali nempahla yalowomkondo, Ubugoxo bento ezifunwa nangumzi Obomvu.
Kunika amaxabiso apezulu ngo BOYA, IZIKUMBA, UKUTYA, ne MPAHLA
EHAMBAYO.

SINGENISE KWELI LIZWE

IBLANKETE ZOBOYA

EZILUKWE NGOBUGCISA.
OBUBODWA, Igama lazo yi "EXTRA
NAVY or MATTROSS"
Kungeniswe ngabanye intlobontlobo ezifana noluhlobo;
esigqibe ke kwelokuba SIZIPAULE i BLANKETE
ZONKE ngopawu esiluginisele na Komkulu ngohlobo
lwemifanekiso le yongamele lenteto.

Ukuba ufuna IBLANKETE YEYENENE,
kangelisa kunene ukuba inawona
umfanekiso we NGONYAMA
kwelinye LAMASONDO ayo.

ZONKE EZI BLANKETE ZIZEZINGA TANDATYUZWAYO.
ZONKE EZI BLANKETE ZILUNGILE ZITE GUNGQU.
IBLANKETE NGANYE IYAYIVELA IMBOLA.

Kwivenkile enitenga kuzo-ke bizani Iblankete
ezinomfanekiso we Ngonvama.

Ziya kubako kuzo zonke ivenkile za Pesheya kwe Nciba nase
zidolopini zonke,

APO ZIPAKULWA KONA KUKO

PEACOCK BROS, and WEIR,
E QONCE.

Ngabo bodwa abanokubhala lomfanekiso we Ngonvama.

GRAHAMSTOWN ADVERTISEMENTS.

BON MARCHE

Sineyona mpahla ininzi, nentle esi
Xekweni apa.

ONKE AMAGUMBI ANEMPAHLA EKETIWEYO.

Ezona Printi zintle 4 1/2 d ne 6d nge yadi. I Galatiya 6d ngeyadi.
Ikeleko Emhlope ne Brown, iqalela kwi 2 1/2 d nge yadi. Ifflanele 3 3/4 d nge
yadi. Ilinzi 4 1/2 ngeyadi. I Sunshades 1s inye. Ikwiliti 2s 11d inye. Itawuli
3d inye. I Cretomes 2 3/4 d nge yadi.

IMPLAHLA YAMADODA,

YONKE IYELUNGILEYO:

IBHULUKWE ZEKODI ziqalela kwi 4s 6d inye.
IBHATYI ZEKODI ziqalela kwi 10s 6d inye.
ISUTI ZETWIDI ziqalela kwi 14s 9d.
IHEMPE ZOKUSEBENZA ziqalela kwi 1s.
IHEMPE EZIMHLOPE 2s 6d.
IMINQWAZI iqalela kwi 2s 6d.
IKAUSI ziqalela kwi 4 1/2 d nge pair.

INDLU YAMANENEKAZI

Yonke Impahla yabaza Kutshata iko.

Ilokwe Esezitungiwe, nabo bonke Ubuqheleqhele
bamankazana, bunokwenziwa ngexesha elifupi.

JOHN W. BAYES & CO.,

Kwi Kona ye Bathurst Street ne Church Square,

GRAHAMSTOWN.

Kubo Bonke Abalesa 'Imvo.

11/290

BANGABA banceda kwa Ipepa lendaba labo abantu
Bakowetu ukuti, xa basukuba benento abaluna uku
zitenga, bavelele, ngangoko banako, kuzo zonke indawo
Ivenkile ezimpahla ihlokonyiswe ngezaziso kwi "Mvo."
Kungalilungelo nakubo bengayifihlanga lonto kubaninivenkile.