

I mvo Zabantsundu

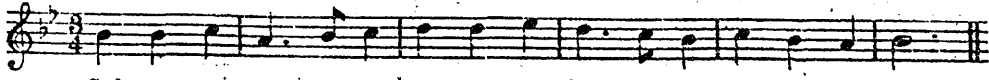
(NATIVE OPINION.)

Authorized Medium for the Publication of Government Notices addressed to Natives throughout the Colony and the Territories.

IXABISO 3d.]

KING WILLIAM'S TOWN, NGOLWESI-TATU, AUGUST 3, 1887.

[No. 148.]



God save our gra-cious Queen, Long live our no-ble Queen, God save the Queen

I JUBHILI!

DYER AND DYER

Kulevenkile i Jubhili YOMNTAN' OMHLE INKOSAZANA iyaku kunjulwa. Woti ngalenyanga ka JUNE otenge kwi-venkile yetu ye Ngubo impahla exabiso liyiponti abuye ayinikwe i

2s. 6d.

Into yonke eyimpahla

NENTSHA ATOTYIWE AMANANI.

NKOSI SINDISA UKUMKANIKAZI!

Ndalamba, Ndapel' Isoya

FOLOKOO!

BANTSUNDU! BANTSUNDU!

"Especially" abanga pandle Yizani kudlisa nityebise amehlo enu kule nkumba yakwa

PASCOE.

Impahla zitu ezintsha zifkile

I Tyali zika Ma—nezika Totosi, nezika Dade, ziyalala, asivuki.

Ityali zaba Ntwenyana (Uyaqonda kodwa P)

Ityali ezi lufipa—zilala "too."

Ezokutshata ingubo, nokuba ufuna iyadi, nokuba ufuna sisikelwe kuwe.

I Printi—Ikeleko—Ilizini—Amalapu ehempe—Izitofu (siyi micako)—Iqiya ze keshemiya—Yonke, impahla itshipu ngoku ngum' mangaliso.

Ezamanene ingubo esazi tungiwe.

Ibhatyi ne Bhalukwe ze kodi "ebansi."

Amanene ayazisikelwa azitungelwe esawo ingubo ngumtungi.

Siyasi dudela zonke ivankile salapa ngempahla situ.

Inkumba yakwa PASCOE,

Ezantsi kwe Tyalike yama Skotshi.

Paulani, niquonde kakuhle, ningayiposi—

Amagama ka PASCOE

AMADODA ati ngu SIGINGQI.
ABAFANI bati ngu SILINDI.
UMTEKETISO ngu POLOCOKO.

E QONCE.

NANTSO INTO OBUKADE UYIFUNA.

BAHAMBI NO MZI WASE QONCE

PAUL XINIWE,

UVULE

IKAYA LABANTSUNDU,

DURBAN STREET, E-QONCE,

Entia kwe "Mvo Zabantsundu" ezantali ko Ngoniti operulu.

IYINDAWO ENTLE YABANTU NAMAHASHE

Kuni ke NTO ZAK'WETU.

PEARCE & BROWN,
Abatengi bezi Limo, nezi Kumba,
Betengisa yonke into

UMGOMANZI.

Sine ntlobontlobo esinyulwe kakuhle zabantu base Sikolweni nasa Magaba.

Impahla yetu siyi tengisa ngamanani apantsi ukwenzela lamaxesha zikuwo.

Sine Bhokuva ezine ezintsha, nenqwelo ezisixenke eseke zassbenza esisi tengisayo, nezi nokugeshwa.

Eziko umkandi wengwelo apa, umsebenzi awenzayo ufezekile, kanjako ubiza imali epantsi kanye.

YIZANI KUZIBONELA, KWA PEARCE & BROWN.

Umgomanzi, Peshaya kwe Nciba.

Ofuna Ukwenzana amatokazi Egusha.

UFUNA ukwenzana amatokazi omabini amatokazi Egusha, awanyo ngumtungi ngehanile.

T. W. BRAGG.

Wasa, Willowvale, 4th July, 1887.

KWIZI HLOBO ZAM EZINTSUNDU.

J. E. L. KULLING,

ONYANGA NGEMITI YASE KOLONI
NEW STREET, E-RINI.

UMISELWE ngoku kodwa uka Nyanga ngemiti yeti hawo zonke izifo esi yolele kwi Hathi Elingweni kumadoda naku usakazana nokuba usanta usiolwe nokuba sita kanti site gasini; nokuba umntu uka Hinkasholo waphila. Ngokukodwa i Gazi nofela—za amntu obhiliwe libashe elingwelo nokuba seotayo izifo.

Oka Kulling Umphili wenza waziyo akuba esiba se Lefoloni, ibotile eila 5/-, eakala 10/-

Oka Kulling umnandi onyanso waziyo se gazi, ibotile eila 5/-, eakala 10/-

Oka Kulling umnandi onyanso waziyo fana sama nkanana, akuko yasa liqita eli lingo otile eithamba kwi 4/-, 7/6, 11/-, ne 22/-.

Aka Kulling Amafuta Omoti, umnandi omkulu ezokutshata kwi ntlobo zonke zazi londe nama dyungadyungu—linge mbitasa 2/-, 5/-, 11/-, ne 22/- inye.

Aka Kulling amagqana oku hlabulala igqazi, eka ngoko nto ingapozu kwawo, angu bokhona, 2/-, 5/-, 11/-, ne 22/-.

La Mayaza emifuno ezifo zonke ezisiwa ngemiti nenge ngoamba ezimbini ezi e Koloni ezi hili sigeniwa.

Ukuba wena nokuba ngumntu wako ofayo pambi kokuba ubhalile mhlambi uye kwesyo le dawo BHALELA ka J. E. L. KULLING woku tanzela elona yasa likahlangelwe ngemiti ezininzi.



QONDANI!
Umnikelo wamaphepheke wo 1887-88.

UMZI ontundu omele umandla wase Qonco nyatyelwa ukuba
Irafu Yamaphepheke

yonaka oqela ngo 1 JULY, 1887, opela ngo 30 JUNE, 1888, iyakwazi ukwamkelwa ngo 1 JULY, 1887.

Umntu abayinisi abantu ukuba bahlanis ngokutshata kwabo de kube ngumhla wa 29 SEPTEMBER, 1887. Abayinisi ngapambi ko 29 September banisiwe Li-ahani Lebeloni ngodlu. Kwakona ngoko elonkhe abalinga e Kosi mabhalile ku Mr. Kiro, abalinga ku Goboqobo ku Mr. Vmurr, abalinga e Tuzara ka Mr. Doss.

Nawa ko 29 September ayakuba ingabala-awanga iyaku nikelwa ku Mawqwa ukuba ayibute. Ayakuti ku abani ayakuba ngababhalanga de kwajiyomini amawo kwakuba lebulu eio lebeloni, selinolele elinikeloni ezimbini, kwansindiko yama-gwelo ngodlu ngayo. Impahla iyakuti-njwa itangilewa. Yonke ke lonto iyakwazi indleko.

Akwawo ngawo ka. Ezulwani ukutshata impahla yabantu, mhlambi ukuba-nyanso ukuba babhelele imali ngawo kwakuti lebeloni ngodlu. Kodwa ukuba abantu abawazi akuyikwazi IMALI YA-MAPHEPEPEKE ka lizaba, ukuba bayakuba, akuko nse yimbi ezokwenzwa ngawo kubala ibawo ngokutshata.

Ngoko ke abantu bangabala ukuba bayaye itshatshata, nokuba kuthengile loko ukuba bahlanis lebulu Lebeloni ngodlu ngawo kuba lwa 29 September, abawazi ukuba bamawo kubala de yabizwayo kwansindiko yama-gwelo; i-ai-njwa impahla yaku itangilewa ngoko e-nyanso kuba kuba kabanjwala ukuba ngawo ko 29 September.

Lebeloni lebe itangileyo za silikwazi ka lizaba.

W. B. CHALMERS,
Umsentyi.

Civil Commissioner's Office,
King Williamstown, 1 June, 1887.

ISAZISO ESIKULU.
Amayeka ka (Nogqala) Jesse Shaw.

DONKE abantu aba kwidawo ezingena BMagosa om hawanyelwa onke amanyano ngo Poi za behalele kum batumela lile tsapo nokuba yi wazi chamba ngawo l-poi (P.O.O.) Imali yawo yi 2/6 ilinye, nga pasudu ko Mphili: Wenzel (Sore Care) oyi 3/6 ukuba imali tanyelwayo igqitilo yo buyiwa namayeka.

JESSE SHAW,
Ingqala Lomolisa.

The Laboratory, Fort Beaufort.

Isaziso ku Mamfengu.
LO ugama lisokole esi sa-ziso, uvakalisa ukuba ngelixa loku ceba lizayo, ulungiselele ukuba anike elona nani longamele amanye ngo-Boya.

Impahla kanjako iyakute-ngwa ngemalana emcinane xa sukuba umntu eze eyipeti imali kuzo zonke ivankile zaku kwela Mamfengu.

Kwakona utengisa: Ingxowa ezi 2,000 Zombona nge 4/, kuse kwi 5/ imali ngengxowa.
THOS. MOBIARTY.
5 August, 1886.

Isaziso se Gqweta.

UMAHISI, elinye u Gqweta am-bantu abantwana, eliso Ngadi MAX KAYEN ayasise ukuba oqaba sasebani wokubiza seentya, inkweli zandlobo zonke. Umntu namatyala ezi ofateli ze manyi apo afawo kwe. Umntu ukuba eke ukuba Emlemente ko 1876 (General Commission and Executive Agent, Collector of Debts, and Practitioner in Magistrates' Courts), i Ofisi yaku ka Mhla kwa Mr. Astor. Umntu walo mabhezi abantu ne ephala (Book) ngawo lizo koo mabhezi xa imali ingoko.

MAX KAYEN, Enrolled Agent.
Kbulu, 14 May, 1887.

KO-TITSHALA.

EBHATI kwisi kolo nase Eke (Inde- pendent) lufawo Mhala, onke Qonco—Bhalilo itangileyo seeka sitaba adawo ayaka yakubo kubizwayo kuse ngayo. Oyi-fawo lo dawo mabhalile ku
REV. JAMES FRITCHELD,
Fort Elizabeth.

banzi nako ukwanellawa ngalompapa kuba...

Pakati kwamauono amapandle esilwa-bonileyo...

Umfimo xa siwutata wonke ubuyote kaku...

Kuko amadodana angqumshelo kakuhle ebheleni...

Kuko amaneze atilo esilpawule ukuba kubayumi...

Kuko amaneze atilo esilpawule ukuba kubayumi...

Impawana.

Kufuneka lonto kanyo. Ose Komani umhaleli...

Keloko izigqibo sase Bheji ezi esingote...

Umtandazo lowo, oyakandlala souba isikalazo...

Yona into yokuba ingabase Ngqushwa beti...

Zenza izintaba into zo Zwedala, zo Kalipa, zo Beenge...

E Bini ungasika kwimpi edolileyo. Amadode...

Kuko isicelo esilohilelweyo ezisa kabanji...

Ukumelwa Kwamalungelo Arantundu. Umtandazo...

du ayagawayo akwale amalungelo, abaninzi...

Okwankolweyo kuyakamama ukvakali-awa...

Umqomi Ndyobo Weatili sase Zonke indawo...

Kuko into abazenzakalisa ngokwabo ngayo...

Sivaya ukvakalisa ukuba kuzinikwe ubhenela...

Umtandazo lowo, oyakandlala souba isikalazo...

EZABABHALELI.

NGE TOURNAMENT.

NKOSI YAM MHELELO Wase Moo, Inowadi ka...

Kanjako, kufuneka kulungiswe indawo yenxaxaxo...

IZIKWELITI ZOTYWALA.

Port Elizabeth, 4 July 1887. NKOSI MANTYI...

Umtandazo lowo, oyakandlala souba isikalazo...

I TRANKEI.

(IYELA KUM'BHALELI.)

Bekuko intlanganisano enkulu e Butterworth...

Kusuke u Headman W. Njikelana wavyasa utuli...

Kupendulo u Capt. Venter wabona izibonda...

Ndikangole kugqwileyo ezininzi lenkosi...

Amaneze awatela kulentlanganisano kwabonakala...

ABALIMI NA BARWESI.

Kowayizolo umsele akubangako boys bulo...

E QOSHA (Aq. 23). Ibotolo, 6d to 1/7 ngeponi...

E KOMANI (July 20). Inkosi, 1/8 to 2/11 ngeponi...

Native Opinion.

WEDNESDAY, AUGUST 3, 1887.

Our Friends THE friends of the natives in Parliament...

word was law. That being the case they should not have opposed...

For the same purpose the Disfranchisement Bill could fairly have been annexed...

SIMULTANEOUS.

New Era. With the celebrations of Her Majesty's Jubilee, the greatest event...

To be effectual this appeal should be as indicated by the Port Elizabeth native meeting...

from the Press, the hearty sympathy of the English community...

A large number of natives have been disfranchised. Their rights have been taken away.

In fact, the greater the majority the lesser the chance of matters ever righting themselves in the Colonial Parliament...

To be effectual this appeal should be as indicated by the Port Elizabeth native meeting...

Editorial Notes.

A CABLE message has been sent to the Secretary of State for the Colonies...

GEO. B. CHRISTIAN & CO.

KEEP WELL-ASSORTED STOCKS OF

Hardware and Ironmongery, BUILDING MATERIAL, Groceries & Oilmen's Stores,

BRUSHWARE,
PAINTS, OILS, AND VARNISHES,
Pots—Kafir Hoes—Red Ochre—Cutlery, &c.—
for Native Trade.

ROUGH GOODS OF ALL KINDS.

GEO. B. CHRISTIAN & CO.

Inyama ne Zonka,

Nento ezinjenge kofu ne swekile zitengeni ko

BOURKE NO MARSH,

e Nyutawuni nakwisitalato esipambi
kwe ofisi ngase meancatweni.

CHARLES J. STIRK,

Umtengisi we Mpahla eyi Ntsimbi ayi-
tengisa ingumqulu na nganye,

CHURCH SQUARE, E-RINI.

AMAYEZA

ADUMI KUBER.

JESSE SHAW (U-Nogqala),
E-BHOFOLO.

Enzwa ngemali okuba apa e South Africa kupela.

LAMAYEZA ezi zibane ezilula zizimela,
ngemali yoku kuzakulwa kwazo nazo ezi
ezilula zazo; ngemali yoku kuzakulwa kwazo
nazo ezi ezilula zazo; ngemali yoku kuzakulwa
kwazo nazo ezi ezilula zazo; ngemali yoku
kuzakulwa kwazo nazo ezi ezilula zazo; ngemali
yoku kuzakulwa kwazo nazo ezi ezilula zazo.

UMPHISI WENHRE (The Sure Cure).
Umculo oqinisekile ukugcina ukhumbane kwe
zika, noma izinye.

WICHA (Sesizile).
Uma yona izinye ezi zizimela kwazi ngemali
ezilula zazo.

UMFUNG YENGA (Greatest Tonic).
Umculo oqinisekile ukugcina ukhumbane kwe
zika, noma izinye.

UMELAMBI LENO (Glyc. Lotion).
Uma yona izinye ezi zizimela kwazi ngemali
ezilula zazo.

UMGEDI OKHAYO (Herbal Alkaline
Aperient).
Ungemali oqinisekile ukugcina ukhumbane kwe
zika, noma izinye.

UMKHELELA (Germicidal).
Umculo oqinisekile ukugcina ukhumbane kwe
zika, noma izinye.

UMKHELELA (Germicidal).
Umculo oqinisekile ukugcina ukhumbane kwe
zika, noma izinye.

UMKHELELA (Germicidal).
Umculo oqinisekile ukugcina ukhumbane kwe
zika, noma izinye.

UMKHELELA (Germicidal).
Umculo oqinisekile ukugcina ukhumbane kwe
zika, noma izinye.

UMKHELELA (Germicidal).
Umculo oqinisekile ukugcina ukhumbane kwe
zika, noma izinye.

UMKHELELA (Germicidal).
Umculo oqinisekile ukugcina ukhumbane kwe
zika, noma izinye.

UMKHELELA (Germicidal).
Umculo oqinisekile ukugcina ukhumbane kwe
zika, noma izinye.

UMKHELELA (Germicidal).
Umculo oqinisekile ukugcina ukhumbane kwe
zika, noma izinye.

UMKHELELA (Germicidal).
Umculo oqinisekile ukugcina ukhumbane kwe
zika, noma izinye.

UMKHELELA (Germicidal).
Umculo oqinisekile ukugcina ukhumbane kwe
zika, noma izinye.

UMKHELELA (Germicidal).
Umculo oqinisekile ukugcina ukhumbane kwe
zika, noma izinye.

UMKHELELA (Germicidal).
Umculo oqinisekile ukugcina ukhumbane kwe
zika, noma izinye.

UMKHELELA (Germicidal).
Umculo oqinisekile ukugcina ukhumbane kwe
zika, noma izinye.

UMKHELELA (Germicidal).
Umculo oqinisekile ukugcina ukhumbane kwe
zika, noma izinye.

UMKHELELA (Germicidal).
Umculo oqinisekile ukugcina ukhumbane kwe
zika, noma izinye.

UMKHELELA (Germicidal).
Umculo oqinisekile ukugcina ukhumbane kwe
zika, noma izinye.

UMKHELELA (Germicidal).
Umculo oqinisekile ukugcina ukhumbane kwe
zika, noma izinye.

UMKHELELA (Germicidal).
Umculo oqinisekile ukugcina ukhumbane kwe
zika, noma izinye.

UMKHELELA (Germicidal).
Umculo oqinisekile ukugcina ukhumbane kwe
zika, noma izinye.

UMKHELELA (Germicidal).
Umculo oqinisekile ukugcina ukhumbane kwe
zika, noma izinye.

UMKHELELA (Germicidal).
Umculo oqinisekile ukugcina ukhumbane kwe
zika, noma izinye.

UMKHELELA (Germicidal).
Umculo oqinisekile ukugcina ukhumbane kwe
zika, noma izinye.

UMKHELELA (Germicidal).
Umculo oqinisekile ukugcina ukhumbane kwe
zika, noma izinye.

Kwabo bafuna Into ezintsha ezintle!

Buzani kuzo zonke ivenkile enime-
lene nazo impahla engaba ziyi tunyelwa
sisitora sakwa

Aluveni, esise Qonce

YIYANI NONKE UKUYA KUBONA
INGUBO

IMINQWAZI

IHEMPE

IZIHLANGU

IZIKAFU NEZIGUBUNGELO

ITYALI

IPRINTI

IZITOFU ZOKUNXIBA

Nezinye into ezininzi kakulu ukuba
zikankanywe.

Indlu eseitunyelwa kuzo lempahla
zezo

YUZI .. Egcuwa

Nakwa-Ndabakazi

HEDENI .. Emtata

Kuzakuvulwa ivenkile eyofunyanwa
kuyo impahla epuma kwisitora sakwa
Aluveni ku Lubisi Ebatenjini (Southey-
ville).

Into yonke etengiswa kwezindawo itshipu
intle kanye.

Kunikwa amaxabiso alungileyo kanye kwe-
zindawo zikankanyiweyo ngayo yonke into
stengiswayo ngabantsundu enjengokudla, ne-
zikumba njalo njalo.

JOHN J. IRVINE & CO.

JOHN J. IRVINE & CO.

ISITORA ESITSHA,

Sengubo nobu Qeleqele
beza Mankazana,

E-QONCE.

Ezamadoda Ihempe, 1/- 1/3, 1/6

Ibhulukwe ze Kodi, 5/-

Eze Twidi ibhulukwe, 4/-

Ibatyi ze Twidi (iqukunjelwe yonke) 6/6

Eze Twidi i Suti, 16/9

Ikeleko, 2 1/2d.

I Printi (intlobo ezintsha) 3d.

I Linzi, 3 1/2d.

Ityali ezimnyama, 2/-

Alikazanga libeko elinjengeli icam.

Amayeza ka Cook Abantsundu.

UMZI ontsundu ucelelwa ukuba ukange-
liso lamayeza abalulekileyo.

Elika
COOK Iyeza Leslu Nokuzaxaso.
1/6 ibotile.

Elika
COOK Iyeza Lokukhohla
(Lingamafuta).
1/6 ibotile.

Aka
COOK Amafuta Exlonda Noh Yawo.
9d. ibotile.

Elika
COOK Iyeza Lepalo.
1/6 ibotile.

Elika
COOK Iyili.
1/ ngobokisana.

Elika
COOK Incindi Yezinyo.
6d. ngebotile.

Oka
COOK Umciza Westepu Sabant-
wana.
6d ngebotile.

Oka
COOK Umgutyana Wamehlo.
6d ngebotile.

Oka
COOK Umciza we Cesine. 1/6.

Niqandiso ukuba igama ngu

G. E. COOK, Chemist,
E QONCE.

Kuba ngawenkohliso angemali igama lake.

U BOYA

Zisheleni ezimbini ngeponti.

W. O. CARTER & Co.

Banaduluku fikolwa nezimpahla zizalwa
ngemali zantzi apa :-

I-BLANKETE
Zabantu base sikolweni.

I-BLANKETE
Zama ngokazi.

I-BLANKETE
Zama zogo kuba kaloku ezintlobo sombi-
ni zabantu kufuneka ngemali fudumeleyo
ngoba basika.

I-BLANKETE
Zama dodana.

I-BLANKETE
Zomtinjana.

I-BLANKETE
Zaba sebo zakutshata.

I-BLANKETE
Zaba maduku tabata. Ukugcina intelo
singati i Blankete ziyalala ezifanele naba-
nina, ezifanele bonke, zitengiswa tahipu
kakulu. Kwenzelwa ezizalwa loboya kwa

I-BLANKETE

I-BLANKETE

I-BLANKETE

I-BLANKETE

I-BLANKETE

I-BLANKETE

I-BLANKETE

I-BLANKETE

I-BLANKETE

I-BLANKETE

I-BLANKETE

I-BLANKETE

I-BLANKETE

I-BLANKETE

I-BLANKETE

I-BLANKETE

I-BLANKETE

I-BLANKETE

I-BLANKETE

I-BLANKETE

I-BLANKETE

I-BLANKETE

I-BLANKETE

I-BLANKETE

I-BLANKETE

I-BLANKETE

I-BLANKETE

I-BLANKETE

I-BLANKETE

I-BLANKETE

I-BLANKETE

I-BLANKETE

I-BLANKETE

I-BLANKETE

I-BLANKETE

I-BLANKETE

I-BLANKETE

I-BLANKETE