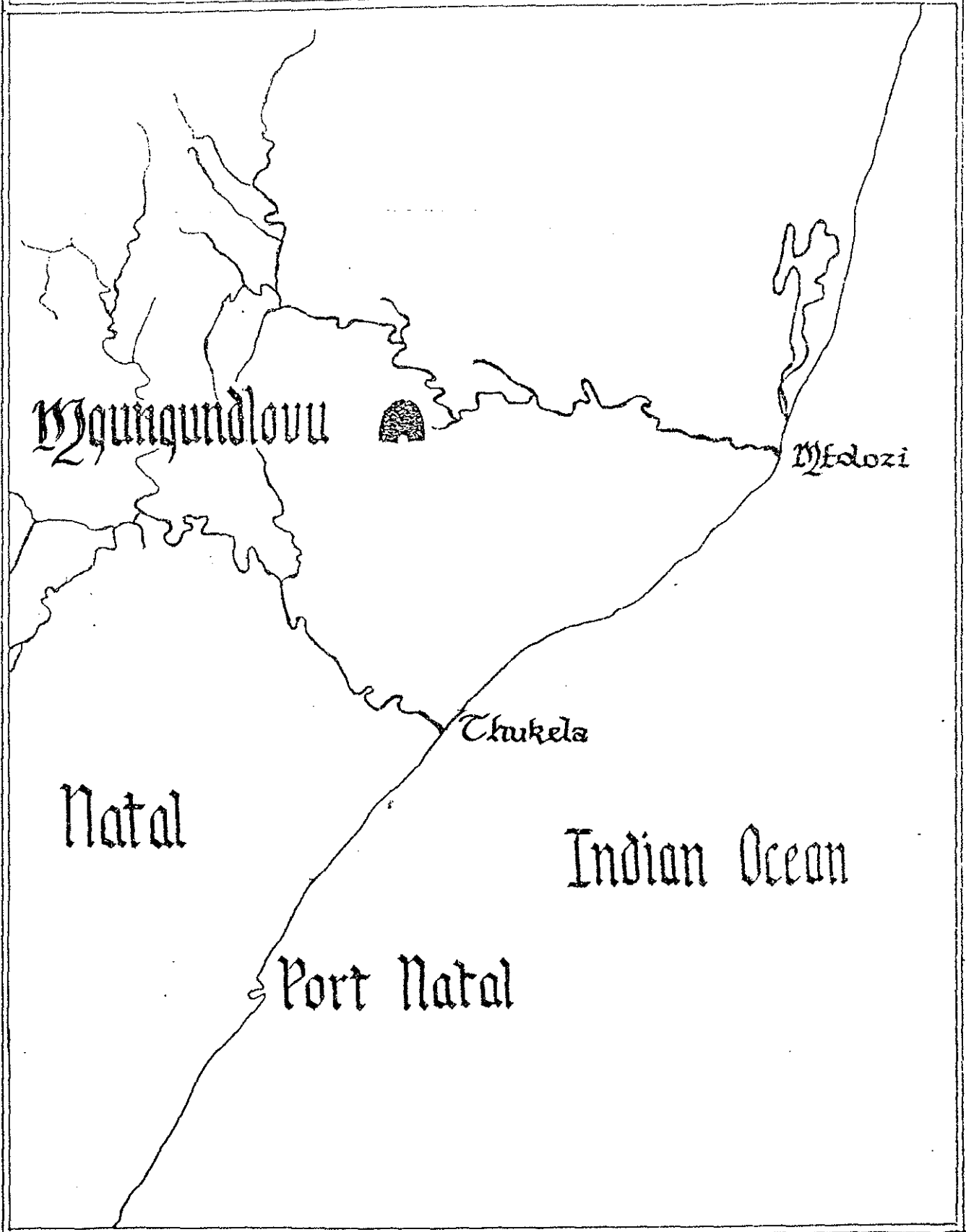


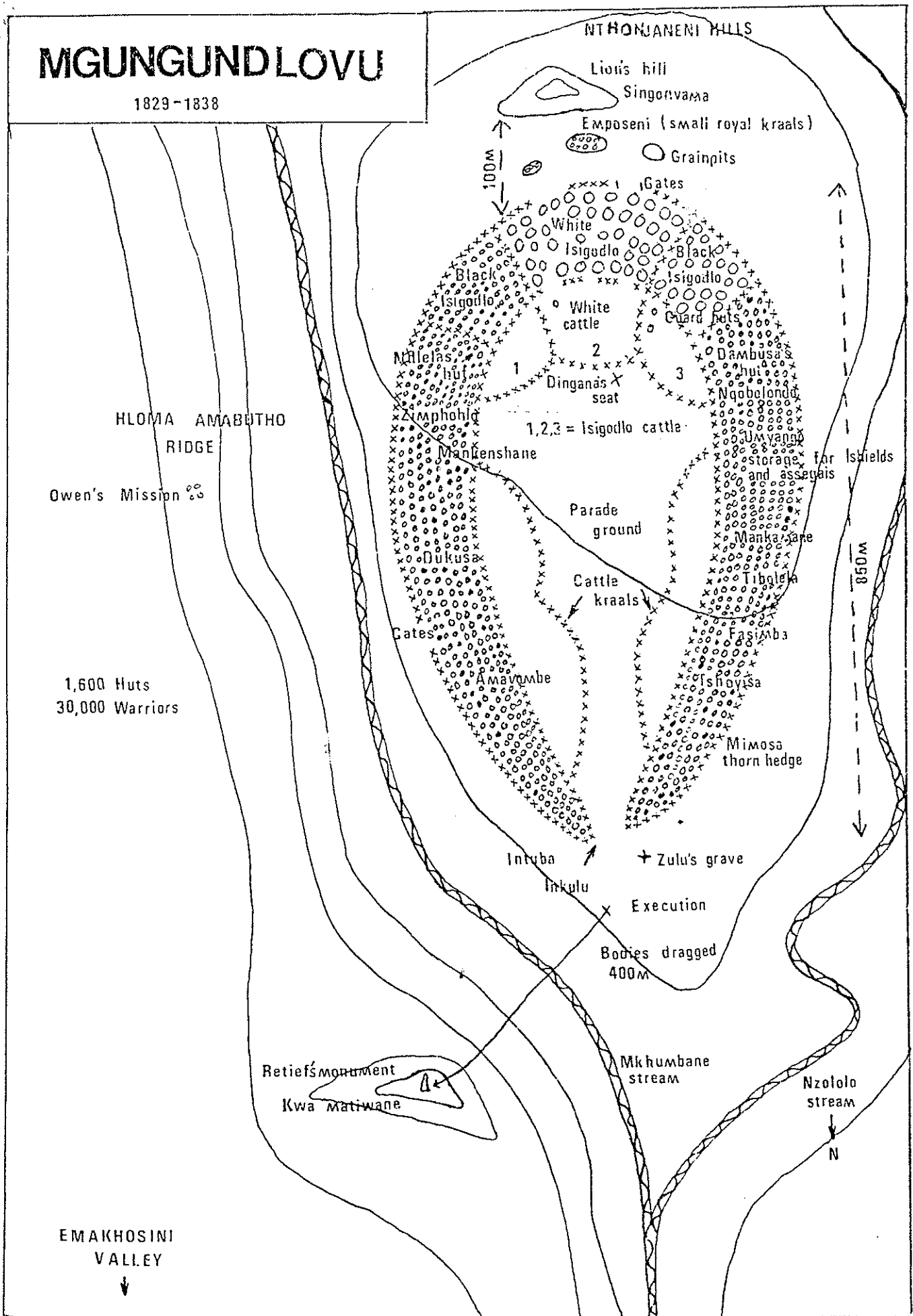
# Mgungundlovu

1829-1838

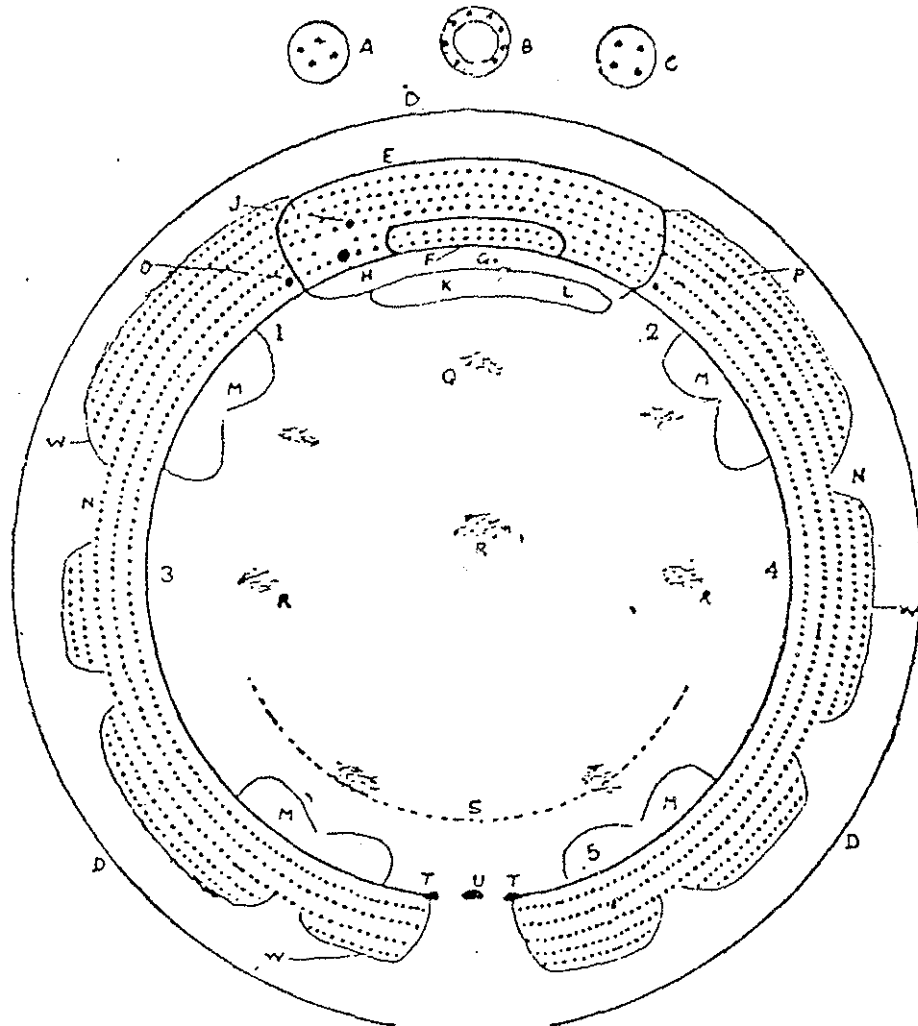


# MGUNGUNDLOVU

1829-1838



Cubbin, A.E. A study in objectivity: the death of Piet Retief. Unpublished M.A.thesis. University of the Orange Free State. 1980. p.



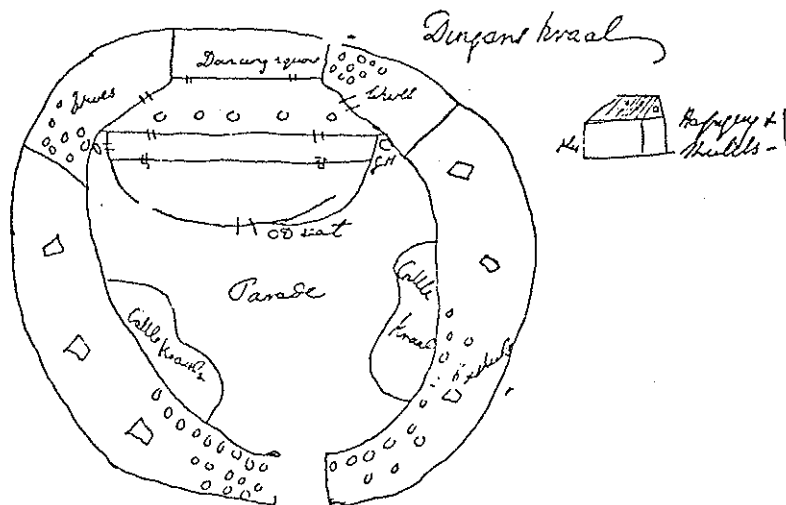
UMGUNCUNDHLOVU.

DINGANE'S KRAAL

Plan drawn by James Stuart

Stuart, J. and Malcolm, D.McK., The diary of Henry Francis Fynn. Shuter and Shooter. Pietermaritzburg. 1950. p.325.

TRACING OF ANDREW SMITH'S SKETCH OF DINGANE'S KRAAL,  
APRIL, 1832



Kirby, P.R. Andrew Smith and Natal. Van Riebeeck  
Society. Cape Town. 1955. p.53.



Engraved by G. B. Williams

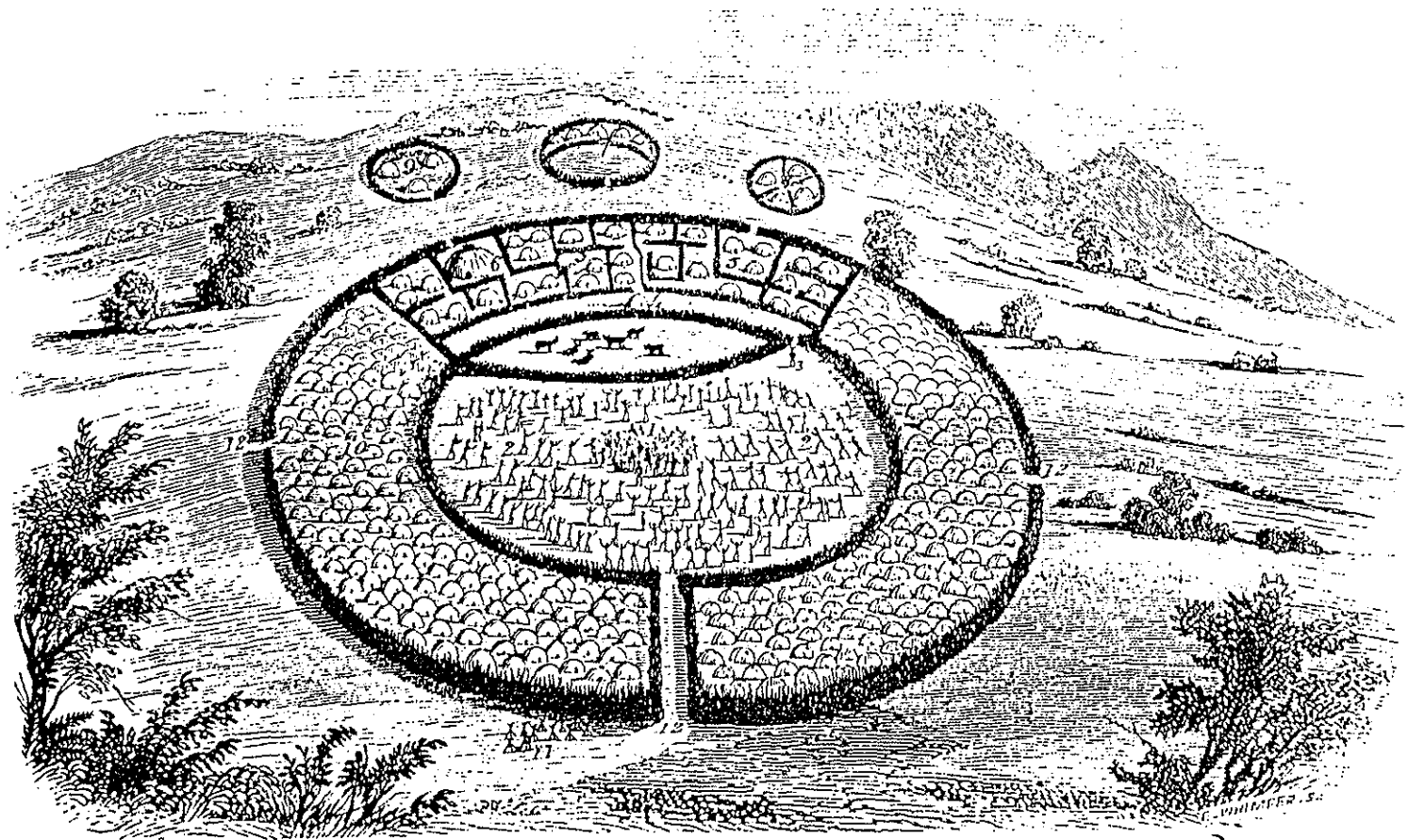
VIEW OF OMUNGINGLOVE,  
 taken from the Road leading to the Tsigahar  
 Published by W. Collins & Co. London

On Stone by T. M. Burgess

GARDINER, A.F. NARRATIVE OF A JOURNEY TO THE ZULU

County, William Crofts. London. London, 1836. p.28.

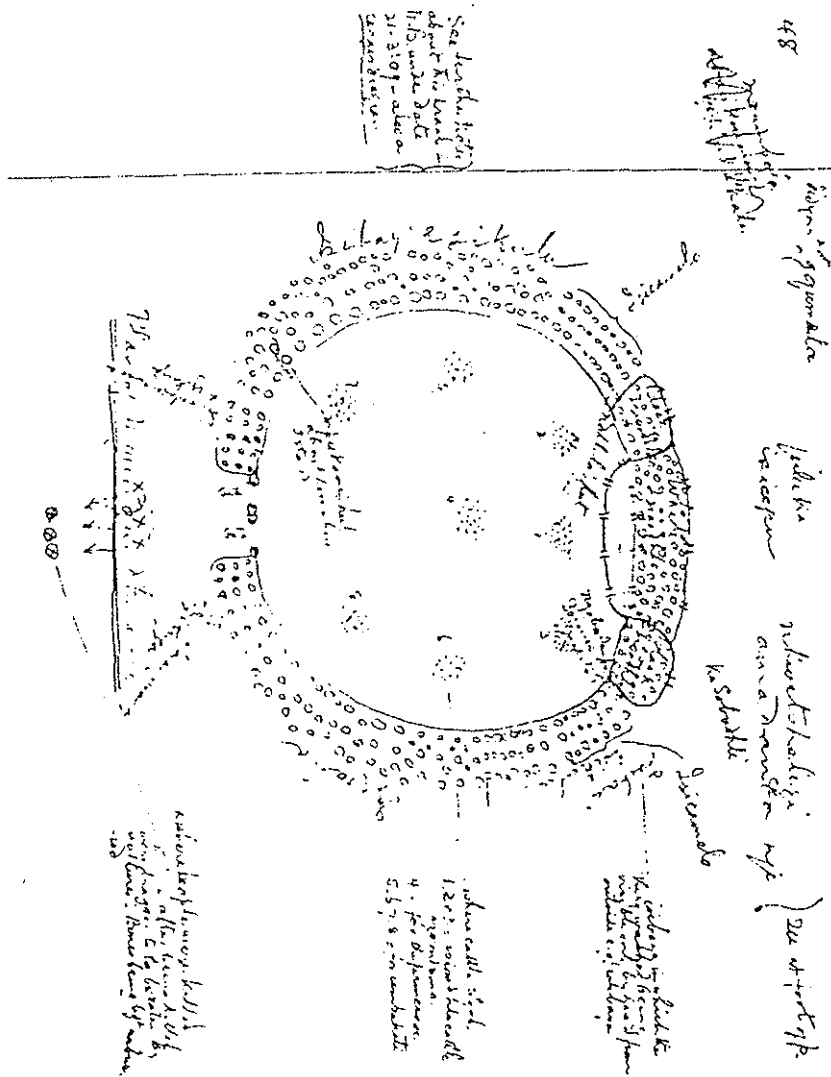
Also facsimile reprint. C. Struik. Cape Town 1966.  
 p.28.



VII.—VIEW OF THE KRAAL, OR CAPITAL, OF THE KAFIR CHIEF DINGAAN.

Holden, W.D., History of the Colony of Natal, 1855.  
reprint. C. Struik. Cape Town. 1963. p. 85.  
Facsimile

LUNGUZA



<The original of this sketch appears on p. 48 of nbk. 30, File 59.>

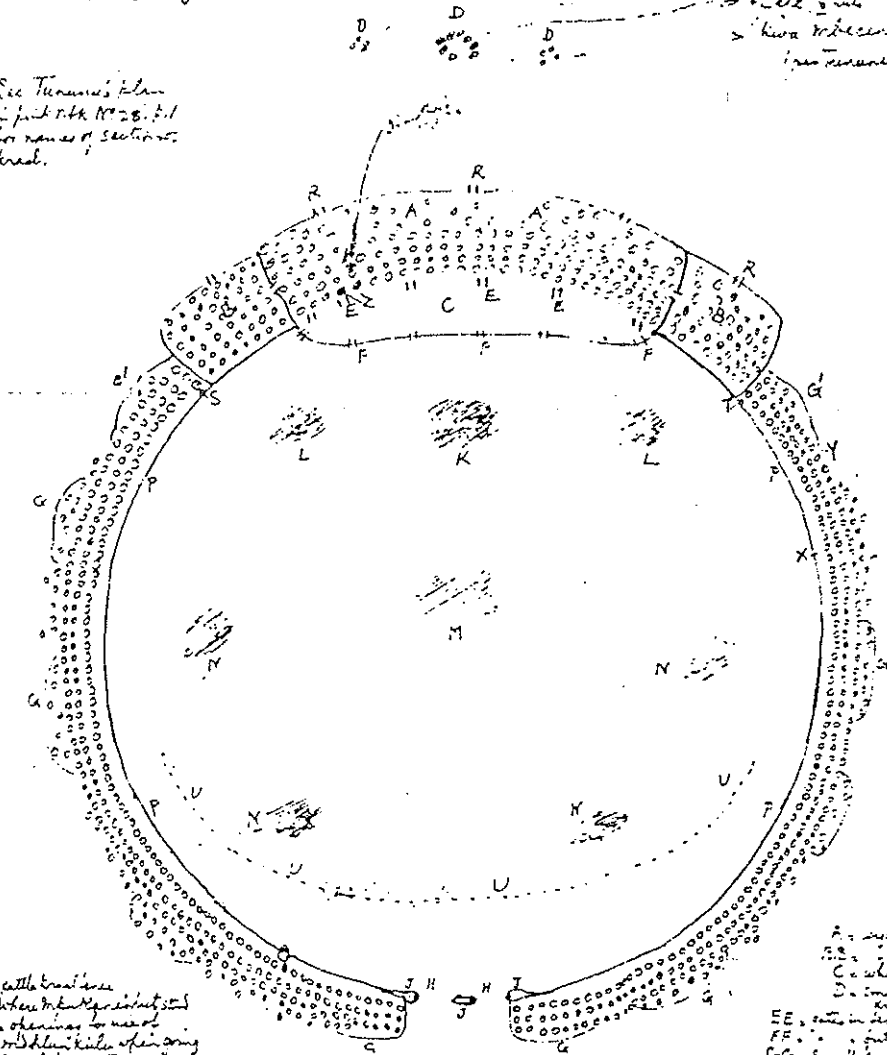
Webb, C. de B. and Wright, J., The James Stuart Archive. Vol.1. University of Natal Press. Pietermaritzburg. 1976. p.309.

LUNGUZA

Plan of Mgungundhlovu according to Lunguza

See Trenchard's plan in part 1 of nbk 32: 5:1 for names of sections: knob.

→ 200000  
→ 100000  
→ 50000  
→ 25000  
→ 12500



PP = cattle kraal  
 R = where the kraal is situated  
 RR = openings to kraal  
 S = 1000000 hut  
 T = 500000 hut  
 U = line of men carrying provisions to milk  
 V = place of recreation, Kwa-kwa  
 W = fence deposited here, dragged from V.  
 G = voice of the  
 S = 500000 hut  
 T = 500000 hut  
 Z = hut in which Lunguza found D. and E., W.

A = 200000  
 B = 100000  
 C = where kraal was  
 D = small kraal  
 EE = 200000  
 FF = 100000  
 G = 50000  
 H = large gateways  
 I = 200000  
 K = 100000  
 L = 50000  
 M = 20000  
 N = 10000  
 O = 5000  
 P = 2000  
 Q = 1000  
 R = 500  
 S = 200  
 T = 100  
 U = 50  
 V = 20  
 W = 10  
 X = 5  
 Y = 2  
 Z = 1

<The original of this sketch appears on p. 11 of nbk. 32, File 59.>





