





object type: <b>head rest</b>	acc no: <b>1997-26-12</b> <sup>9-15</sup>
vernacular: <b>isigqiki / isicamelo</b>	<div style="border: 1px solid black; padding: 20px; width: fit-content; margin: auto;"> <p>contact prints</p> </div>
Sub-type:	
Community: <b>sa kwa Zulu</b>	
sub- group:	
geographical location:	location:
	shelf:
	b/w                      c/t                      c/s
	Dimensions:
date and place collected:	h: <b>54.5 cm</b> diam:
	w: <b>17.5 cm</b> mounted:
date executed :	d: <b>6.5</b>
artist name, sex:	medium:
	<b>wood</b>
use:	
<b><i>probable use:</i></b> To rest head. i.e. pillow	
purchase / <u>donation</u> / bequest: <b>Anglo American</b>	
price paid: (group) <b>R 14,000</b>	physical description:  condition: <b>good.</b>   pattern: <b>Dark wood</b> (see across page for decorative details, note the pattern difference on both sides where applicable.)
insurance value: <b>R 14,700 (1997)</b>	
authority:	
original collection no:	
object type translation:	
catalogues:	

1997 HORSTMANN GENERAL FILE

OTHER INFORMATION, NEWSPAPER AND MAGAZINE ARTICLES ON THE "1997 HORSTMANN COLLECTION" IS KEPT IN THE FILE GENERAL FILE.

Article referring to specific works in the collection are filed in the relevant file, not in the general file.



Greater Johannesburg Metropolitan Council 97-11-20

GJMC : EXECUTIVE COMMITTEE 97-10-07

GJMC : SPORT, ARTS AND CULTURE COMMITTEE 97-09-25

METROPOLITAN SPORT, ART, CULTURE AND ECONOMIC DEVELOPMENT  
(METROPOLITAN ARTS AND CULTURE DEVELOPMENT AND FACILITIES)

Strategic Thrust : Communications and Marketing

Nature of Report : Proposal for Implementation

## 5 DONATION OF WORKS OF ART

## PURPOSE OF REPORT

To acknowledge a donation of works of art to the Johannesburg Art Gallery.

## BACKGROUND

At its meeting held on 20 June 1997, the Art Gallery Committee recommended that the following works of art, donated by the Anglo American Johannesburg Centenary Trust and Mr Udo Horstmann, be accepted into the Gallery's permanent collection:

Donor: Anglo American Johannesburg Centenary Trust

Community	Object	Medium
Matabele	container	wood
Nguni	pipe	wood, beads, string
Shona	knife with sheath	wood, wire, metal
	headrest	wood
	2 x neckrests	wood
	2 x staffs with carved heads	wood, beads
Zulu	container	wood
	platter	wood
	platter	wood, wire
	2 x neckrests	wood
	2 x vessels	wood
	11 x combs	bone, pigment
	18 x spoons	bone, pigment
	4 x spoons	bone, pigment, wood, beads
	5 x objects	bone, wire, beads
Unknown	carved staff	wood beads

Donor: Mr Udo Horstmann

Community	Object	Medium
Shona	dancing staff	wood, beads
	knife with sheath	wood, wire, metal
Tswana	staff with carved snake	wood, beads
Zulu	sweat remover	bone

Greater Johannesburg Metropolitan Council 97-11-20

GJMC : EXECUTIVE COMMITTEE 97-10-07

GJMC : SPORT, ARTS AND CULTURE COMMITTEE 97-09-25

METROPOLITAN SPORT, ART, CULTURE AND ECONOMIC DEVELOPMENT  
(METROPOLITAN ARTS AND CULTURE DEVELOPMENT AND FACILITIES)

Strategic Thrust : Communications and Marketing

Nature of Report : Proposal for Implementation

This is a very important collection of 19th century Southern African art which has been repatriated to its country of origin. The pieces are of excellent quality and will be a valuable addition to the Gallery's growing collection in a meaningful way as they will provide additional material for research and documentation as well as providing the Gallery with a rich educational resource.

A number of objects in this collection relate works in both the Brenthurst and the Gallery's existing collections. The Zulu wooden vessels and container not only show stylistic relationships but also exemplify variation to vessels found in the previous collections. In particular, the Nguni pipe, the Shona headrests and the Zulu bone spoons and combs are significant as they aesthetically complement objects of the same type from other regions found in both the Brenthurst and the Gallery collections.

There are objects whose precise attribution is at present unknown, although they are generally believed to be of Southern African origin. These items are stylistically unique in the way that the motifs have been carved. The sweat scraper as a type of utility object is especially significant because of its rarity.

## CONCLUSION

This collection is considered to be an important part of the repatriation of 'traditional' Southern African art to its country of origin.

## IT IS RECOMMENDED

That the donations detailed in the item be accepted into the Gallery's permanent collection and that the thanks of the Greater Johannesburg Metropolitan Council be conveyed to the Anglo American Johannesburg Centenary Trust and Mr Udo Horstmann.

(N/F)

(AG 26/97)

(ART GALLERY)

(Sport, Art, Culture and Economic Development)

(Chief Curator)

(Tel. 725-3130/3180/3181)

TMC/04137 (SA&amp;C\00343)

pm/om

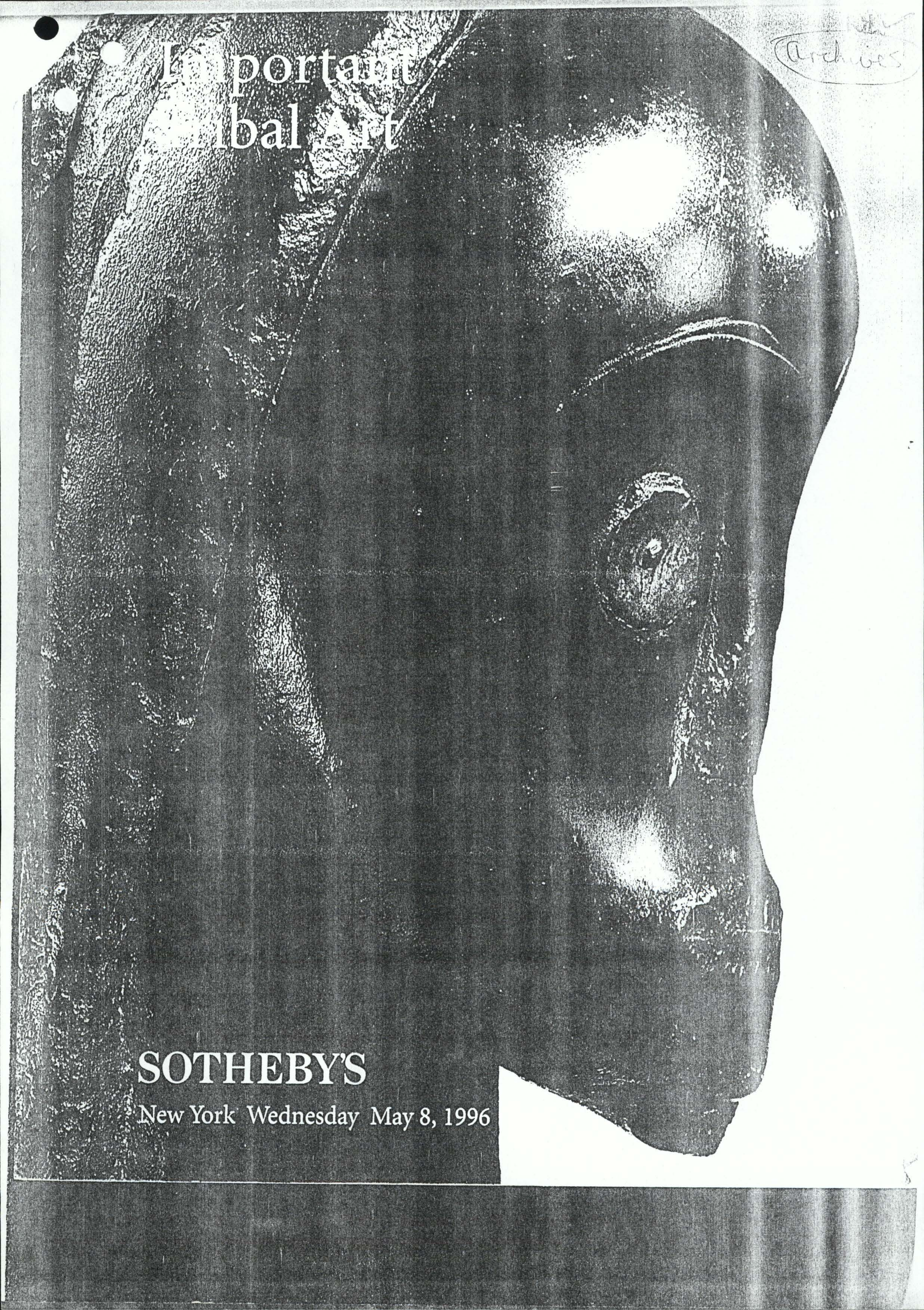


Important  
African Art

Archives

**SOTHEBY'S**

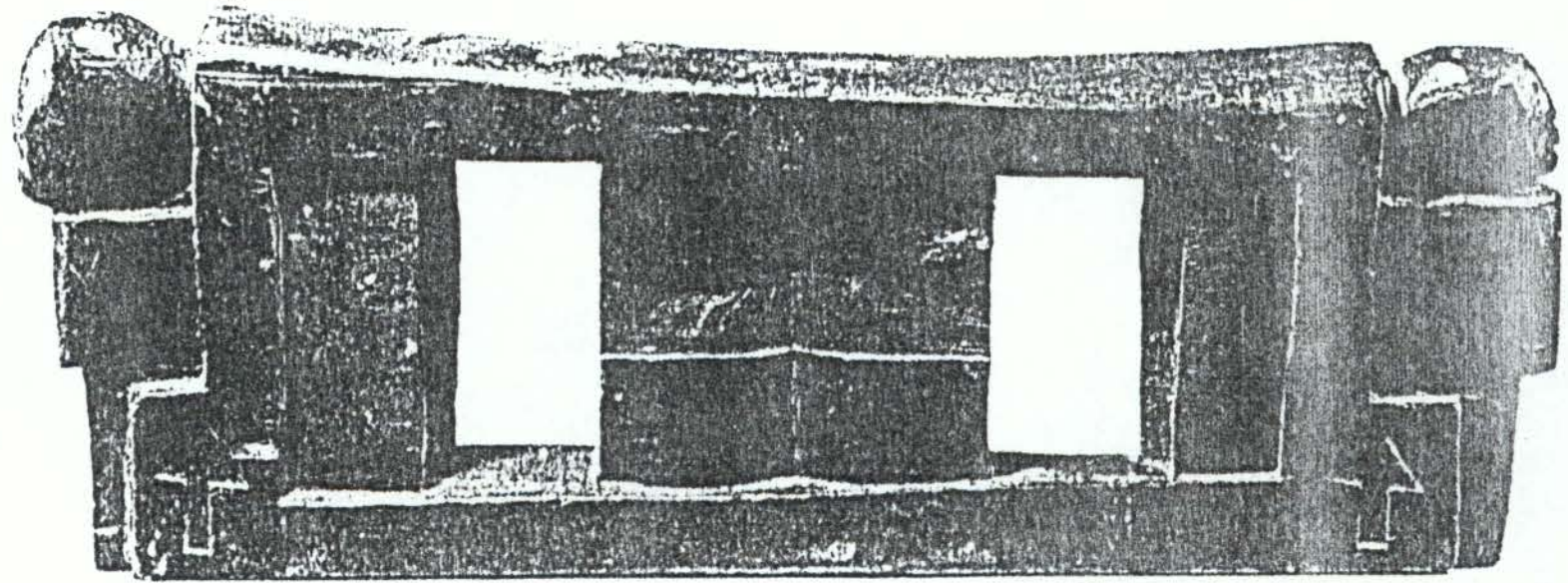
New York Wednesday May 8, 1996







331



332

\$3162

AFRICAN FURNITURE

*Property of Various Owners*

□ 138

An Ethiopian Throne, the three thick arching legs supporting an immense truncated concave circular seat beneath a tri-part back set at an obtuse angle and decorated with an openwork crescent form, decorated on the reverse of the back with a varied deeply incised geometric motif; fine blackened patina. *Height 36<sup>3</sup>/<sub>4</sub> in. (93.3 cm.)*

\$3,000-5,000

□ 139

An Ethiopian Chair, the angular arching legs joining at the center and supporting a circular concave seat beneath a flat rectangular back, carved with geometric openwork motif; fine blackened patina. *Height 39 in. (99.1 cm.)*

\$3,000-5,000

□ 140

An Ethiopian Chair, supported by four truncated triangular legs, the rectangular seat leading to a tapering back terminating in two truncated triangular forms; fine and varied dark brown patina. *Height 29<sup>3</sup>/<sub>4</sub> in. (75.6 cm.)*

\$1,500-2,000

□ 141

A Nupe Stool, rising from eleven tapering legs, with a flat circular seat encircled by a rim of serrated motif, and decorated with concentric rings encircling a double star pattern, a circle and a raised helix; fine rich dark brown patina.

\$1,500-2,500

□ 142

A Senuso Bed, the four thick short legs supporting a flat rectangular bed with raised triangular pillow at one end; exceptionally fine honey brown patina. *Length 81 in. (2.06 m.)*

\$2,500-3,500

□ 143

A Fine Senuso Bed, the four short conical legs supporting a slender flat rectangular bed with rounded corners, and a raised triangular pillow with conical support; fine honey brown patina. *Length 70 in. (1.78 m.)*

\$5,000-7,000

□ 144

A Fine Senuso Chair, the seat of rounded flat form with two spats fitting in the two square holes beneath a separate hollowed elliptic back, medium brown aged patina *Height 29<sup>1</sup>/<sub>4</sub> in. (74.3 cm.)*

*Provenance:*

B.C. Holland, Chicago

*Cf. Barbier, Art of the Côte d'Ivoire, vol.2, 1993:fig. 44 for a related example from the Josef Muller Collection.*

Owing to the cost of carving such elaborate reclining chairs, they were prestige items amongst the Senuso themselves.

\$4,000-6,000

□ 145

An Ashanti Chair, the cylindrical waisted legs supporting a flat square seat with arching flanges at either side, and the back constructed of two cylindrical rods supporting an arching crescent rod, and inset with numerous aluminum tacks in a geometric motif on the seat; fine dark brown patina. *Height 13<sup>1</sup>/<sub>4</sub> in. (33.7 cm.)*

*Provenance:*

J.J. Klejman, New York

\$600-900

□ 146

A Senuso Chair, standing on four columnar legs, and interrupted by horizontal panels with pierced geometric and linear decoration, and supporting the rectangular seat adjoining, each with incised linear patterns and crosshatching, beneath a transverse concave backrest tapering at each end; medium and dark brown patina. *Height 25<sup>1</sup>/<sub>4</sub> in. (61.1 cm.)*

\$2,000-4,000



SOUTHERN AFRICA

Property of Various Owners

□ 325

A South African Beaded Marriage Doll, rising from a columnar torso, the whole adorned with strings of beads, four clusters of cowrie shells at the hips and shoulders, and carrying a large satchel decorated with beads and cowrie shells, beneath an elongated neck and a cap-like head covered with cascading strings of beads and two pierced coins at the crown; beads of red, yellow, light blue, navy blue, and silver. *Height 9 1/4 in. (23.5 cm.)*

\$300-500

□ 326

A South African Beaded Headdress, two connecting strips of beads at the top leading to a pendant elongated rectangular form decorated fashioned in an alternating diamond/triangle motif, beads of black, green, light blue, red and white. *Length 25 in. (63.5 cm.)*

*Provenance:*

Acquired by the owner's late husband, Baron von Kühne, while traveling in South Africa before the Second World War.

\$400-600

□ 328

A Southern African Basket, of inverted conical form and tapering to a cone at the lid, and tightly woven with a circular hole at the crown of the lid, with a pattern of zigzag bands alternating tan and dark brown on the intension leading into an alternating rectangular motifs on the interior of the lid. *Diameter 12 in. (30.5 cm.)*

\$2,000-3,000

□ 329

Three Giryama Grave Posts, each rising from fragmentary base, with lengthy rectangular, abstract bodies cut with mirrored triangles for the waists, beneath slender necks and circular heads and decorated on the fronts with varied deeply incised triangular motif under the face with circles, triangles, and slashes for a stylized face; fine and varied grayish brown patina with areas of lichen. *Heights 72 1/2 in. to 58 1/2 in. (1.84 m. to 1.49 m.)*

\$1,800-2,200

□ 330

A South African Hide Shield, of flat oval form and tapering at the top with a conical projection at the center and attached with numerous bands at the back to a cylindrical shaft, decorated on the entire surface with rows of raised nubs in a repeating linear pattern; fine aged patina. *Length 57 in. (1.45 m.)*

*Provenance:*

Carl von Hoffman

According to the present owner, this shield was collected in South Africa by Carl von Hoffman in 1925/1926 when he was conducting research on the Zulus and the Ndebeles.

\$500-700

□ 331

A Tanzanian Figure, standing on platform feet with incised toes and thick straight legs beneath wide hips and a columnar torso framed by articulated arms with slightly cupped hands and incised fingers leading to rounded shoulders and a columnar neck beneath a rounded head with flattened facial plane, and surmounted by a cap-like coiffure; dark brown patina. *Height 12 1/2 in. (31.8 cm.)*

\$800-1,200

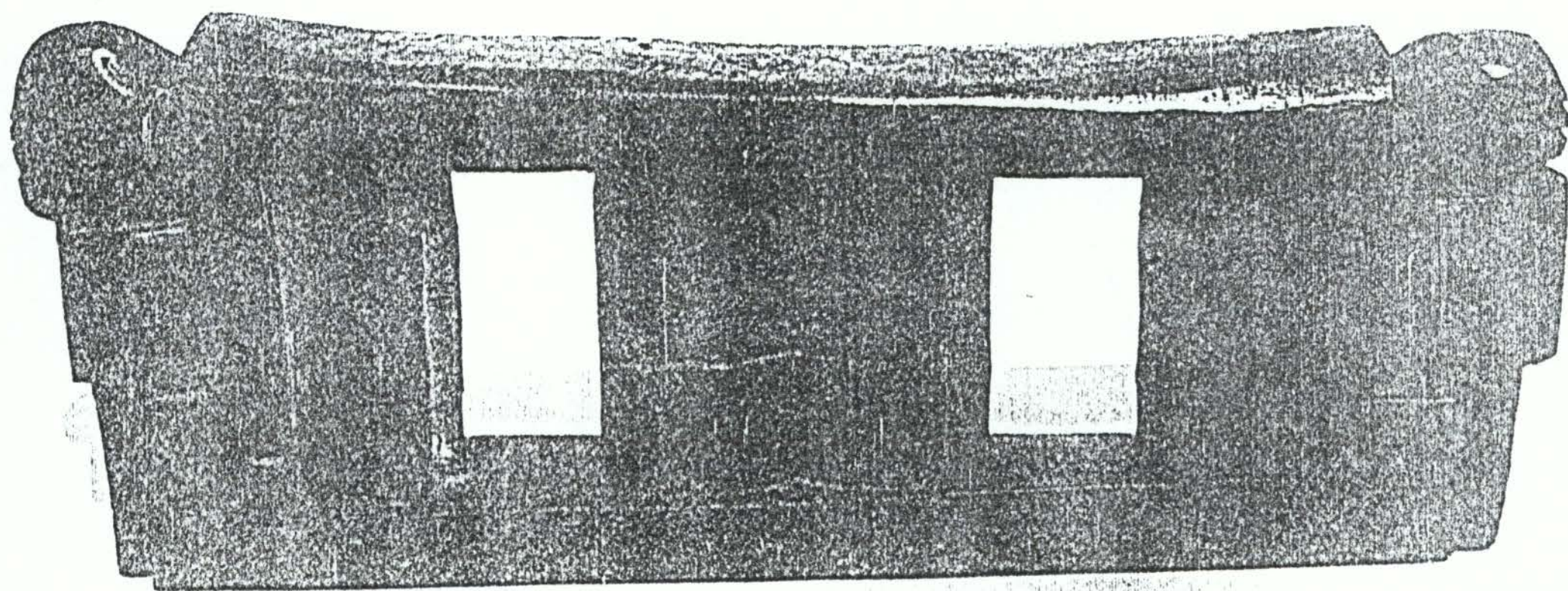
□ 332

A Zulu Neckrest, carved in rectangular openwork form with an abstract figure at each end including a spherical head with heart-shaped facial plane and abstract features, and decorated on one side with two incised arrows; aged patina of dark and light brown. *Length 20 1/2 in. (52.1 cm.)*

\$800-1,200

PRICE = \$ 3162.





22 ZULU NECK REST