

Southern African

LIST OF THINGS TO DO TO COMPLETE ARCHIVE FILE

ACCESSION NUMBERS:	1	2	3			
	4	5	6			
	1	2	3	4	5	6
FILL IN FORM						
MEASURE WORK						
DOCUMENT WORK						
INVOICE FROM ADMIN						
PHOTOCOPY C&R REPORT	✓					
INSURE WORK						
PHOTOGRAPH WORK						
ENVELOPE FOR PHOTOGRAPH						
ENTER ON DATAEASE						
PRINT ARTIST AND PERSONS NUMBER FOR FILE						
TYPE CATALOGUE CARD						
HAVE CATALOGUE CARD PROOFREAD						
PHOTOCOPY CATALOGUE CARD FOR FILE						
TYPE REFERENCE CARD						
FILE CATALOGUE AND REFERENCE CARD						
TYPE PROVENANCE FORM						
TYPE EXHIBITIONS FORM						
TYPE SUBJECT CARDS						
FILE SUBJECT CARDS						
FILE IN ARTICLES, REPORTS ETC.						
FILE IN ARCHIVES						

stuff contained

1996-01-13



object type: Snuff container	acc no: 1996-01-13
vernacular:	contact prints
sub-type:	
community: Southern African Xhosa	
sub-group: unknown	location: [REDACTED]
geographical location: Ciskei	shelf: [REDACTED]
date and place collected:	b/w: c/t: c/s:
date executed:	dimensions:
artist name, sex:	h: diam:
use:	w: mounted:
	d:
	medium: gourd, glass seed-beads thread

Donated by: Anglo American Johannesburg Contency Trust
 purchase / donation / bequest: Michael Graham - Stewart
 175 Bond Street Wandon W1Y 9PB

price paid: £200 - £44.45 MID
 = £155.55 by AAJCT
 insurance value: R 1 000 (1995)

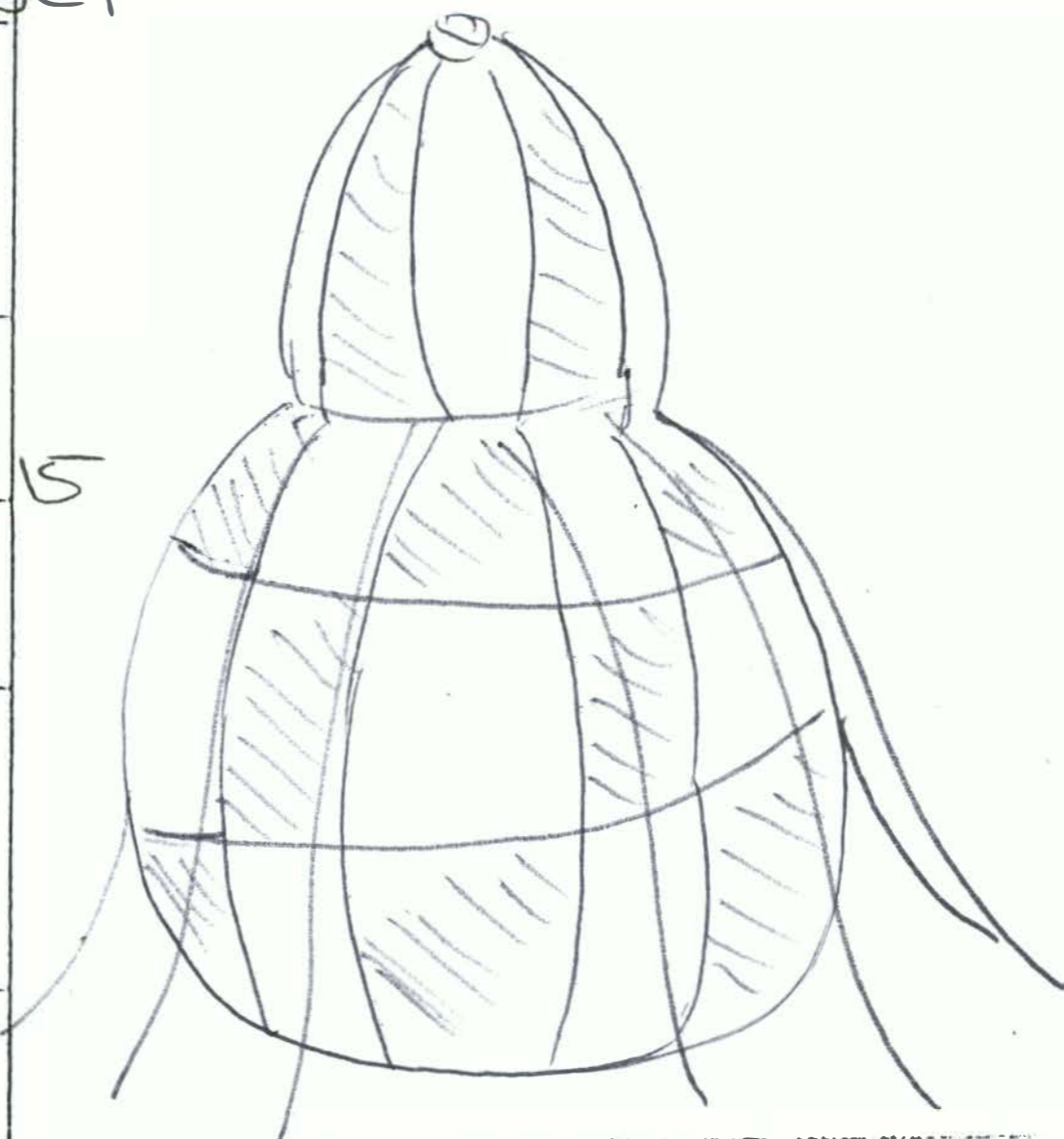
authority: PAC 1995-08-25
 1995-10-06
 TMC Exec. Comm 1996-02-15

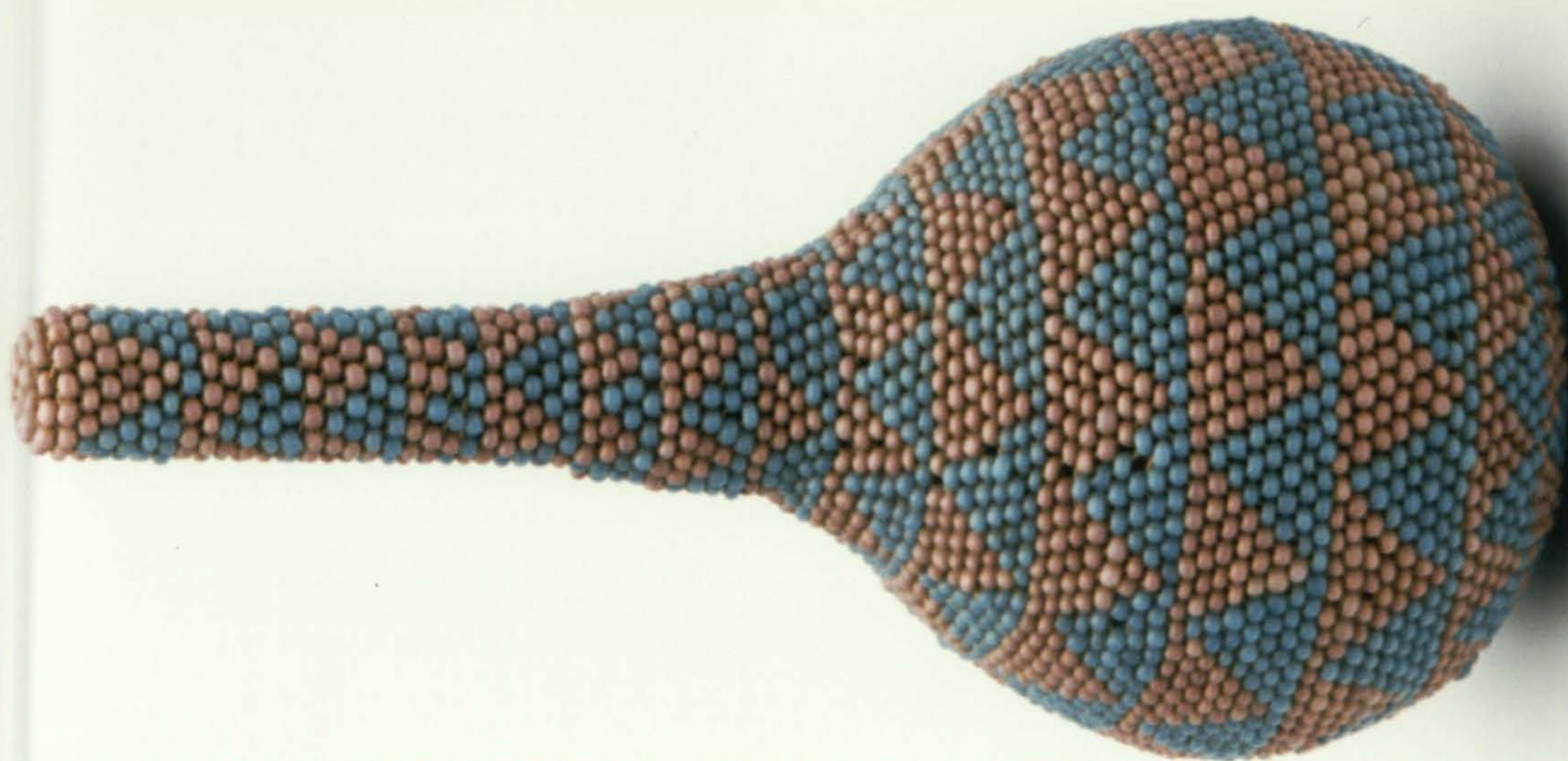
original collection no:

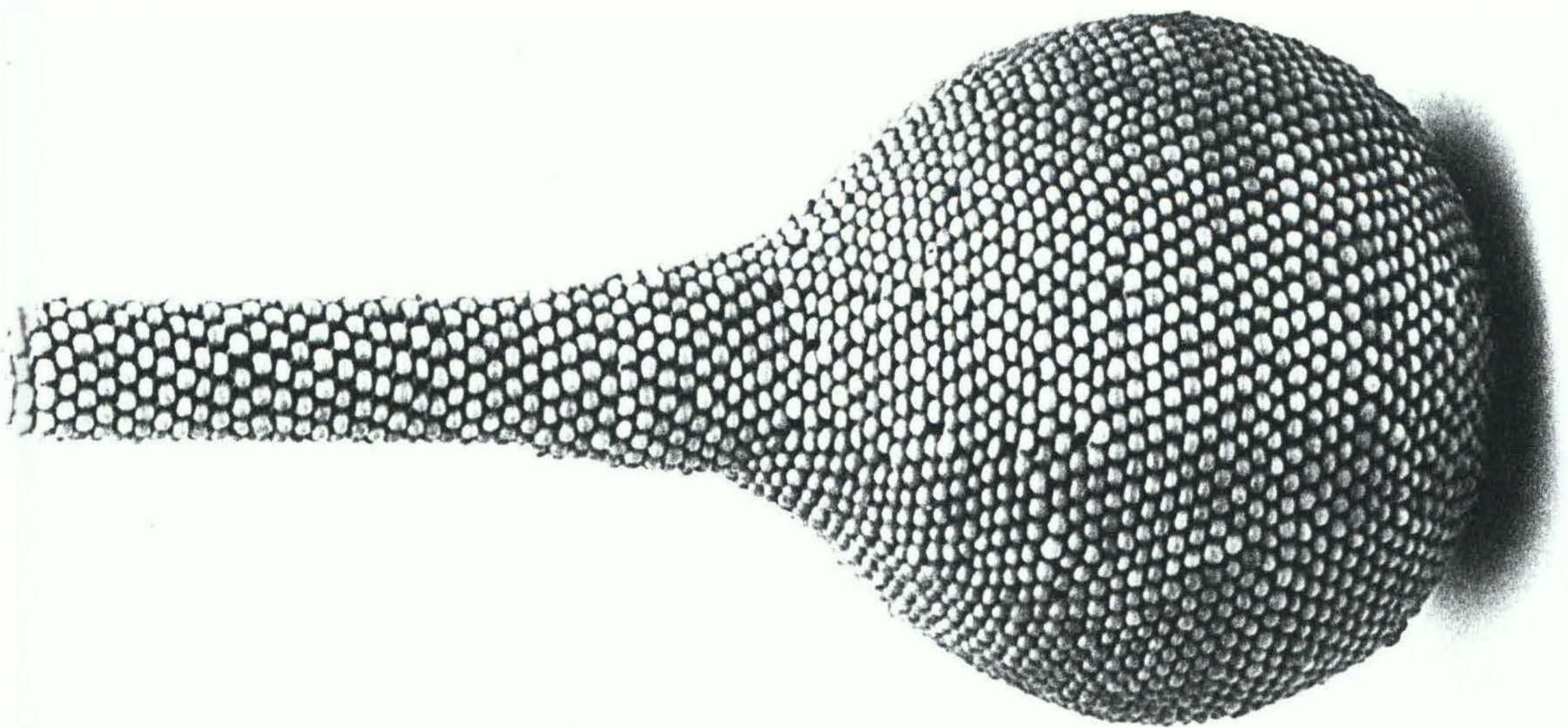
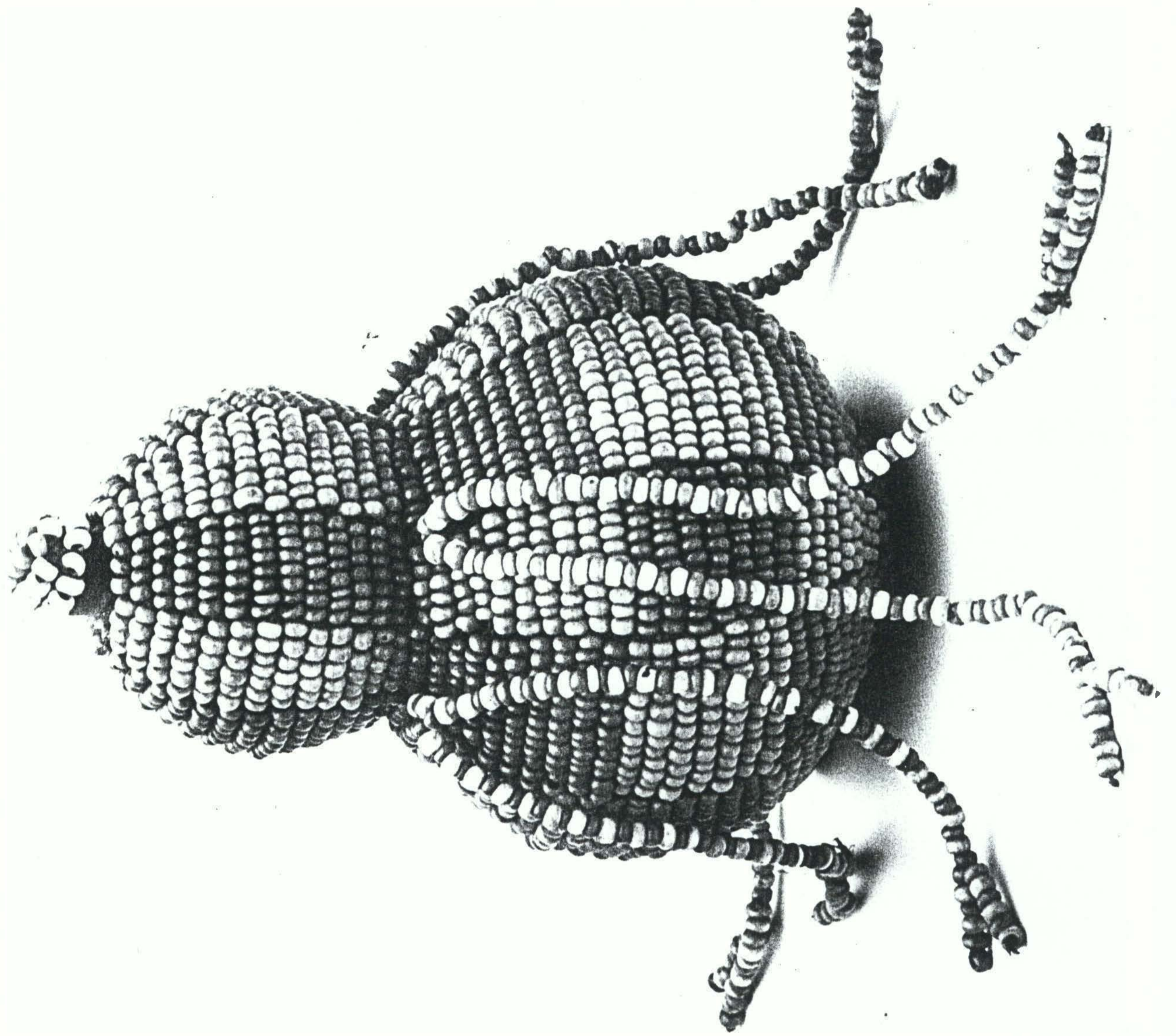
object type translation.

catalogues:

physical description:







MICHAEL GRAHAM-STEWART

173 NEW BOND STREET
LONDON W1Y 9PB

20 Sept. '95

NESSA LIEBHAMMER
Johannesburg Art Gallery

Dear Nessa,

Thank you for your fax of September 15th. Of course I will reserve the items for you. I had priced the individual pieces as follows;

1. apron/waistband	900
2. Xhosa bag	200
8. N. Nguni necklace	500
14. Seven core belt	300
21. Snuff container	300
23. gourd snuff	} 600
24. gourd rattle	
25. snuff container	
26. thin skirt	1500

UK £ 4.300.

Discount; 400

Total: £ 3.900.

I hope this makes sense. I am delighted you are coming over for Africa '95. It will be a pleasure to see you again. My office is just around the corner from the Royal Academy. The jamboree has already started with the textile exhibit and then there is the african "prom" at the Albert Hall this Friday which I am really looking forward to -

regards

Michael

johannesburg
art gallery

PO BOX 23561
JOUBERT PARK
2044
SOUTH AFRICA

KLEIN STREET
JOUBERT PARK
JOHANNESBURG
SOUTH AFRICA

TELEPHONE: (27-11) 725-3130/80/81
EDUCATION: (27-11) 725-3184/5/6
FAX: (27-11) 720-6000

11/2A
NL/jw

17 August 1995

Michael Graham-Stewart
173 New Bond Street
London W1 Y 9PB
England

TO FAX NO. 0944 171 629 4602

Dear Michael

The parcel DID finally arrive but was held up by the post office, which was hoping to extract some customs duty out of us.

Rochelle and I have discussed the purchasing of your collection at some length. Given the quality and extent of our collection, we are reluctant to purchase objects which duplicate our holdings or which we are unlikely to display. As an art gallery, it has always been our policy not to keep multiples of objects and to acquire only the finest examples available.

A number of objects in your collection duplicate our holdings but there are also some very fine pieces which do not and which we would be interested in acquiring. These are:

Item 1 - apron/waistband	5000.00
2 - Xhosa beaded bag	400.00
8 - Northern Nguni beaded necklace	2000.00
14 - seven core belt	6500.00
21 - horn snuff container with pod ends	1200.00
23 - spherical snuff gourd, beaded	2000.00
24 - gourd rattle	900.00
25 - pear shaped snuff container	800.00
26 - thin fabric beaded skirt	800.00
	19600.00

We would therefore like to have the prices on individual items or a sum for the ones listed above.

/Although

Although the album is particularly interesting and is something I would very much like to acquire, we are not geared for this kind of collecting and do not have proper conservation facilities for it. I have offered it to our sister institution, MuseumAfrica, who would like to know how much you are asking for it.

We look forward to hearing from you so that we may take the matter further.

Yours sincerely

Nessa Leibhammer (Ms)

Curator: Traditional southern African art

MICHAEL GRAHAM-STEWART

173 NEW BOND STREET
LONDON W1Y 9PB

7 NOVEMBER 95

JOHANNESBURG ART GALLERY
Attn: NESSA LIERHAMMER.
KLEIN ST
JOUBERT PARK, JOHANNESBURG.
2044 SOUTH AFRICA.

INVOICE

A COLLECTION OF ANTIQUE SOUTHERN
AFRICAN BEADWORK.

UK £ 3,900.

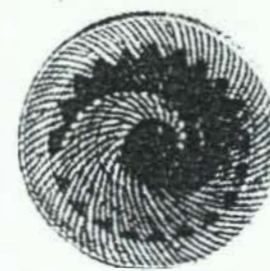
(three thousand nine hundred pounds).

Items to be packed and shipped
by Alban Shipping to Freitan
South Africa Ltd.



17. A PANEL AND STRAP DECORATED WITH ZIGZAG MOTIFS.
Panel size 14 by 18.5 cm.
18. A WOOD PIPE WITH BEADED STEM. Length 13 cm.
19. } TWO BEADED NECKLACES. Lengths 33 and 34 cm.
20. }
21. A HORN SNUFF CONTAINER TIED TO A CLUSTER OF
BEADED CORDS WITH POD ENDS. Length 28 cm.
22. A GOURD SNUFF BOTTLE ENCLOSED IN A BEADED LEATHER
COVER AND HANDLE/BRACELET. Length 17.5 cm.
23. A SPHERICAL SNUFF GOURD ENTIRELY COVERED WITH BEADS,
WITH ELABORATE STRAP. Height 8.5 cm.
24. A GOURD RATTLE, THE SURFACE ENTIRELY COVERED WITH
TRIANGULAR MOTIFS OF BLUE AND PINK BEADS.
Height 13 cm.
25. A PEAR SHAPED SNUFF GOURD WITH ALTERNATE PANELS OF
BLUE AND PINK BEADS. Height 12 cm.
26. A THIN FABRIC AND BEADED SKIRT WITH TWO POCKETS AND
ELABORATE MULTICOLOUR FRINGE. 78 by 86 cm.
27. TWO ORIGINAL COLOURED LITHOGRAPHS BY G.F. ANCIAS BEING PLATE
XIX OF "THE KAFFIRS ILLUSTRATED" 1849. Each 29 by 20 cm.
28. AN ALBUM OF ALBUMEN PHOTOGRAPHS TITLED "PHOTOGRAPHIC
VIEWS OF CAPE TOWN AND NEIGHBOURHOOD" BUT IN FACT
COMPRISINGLY OF APPROX 60 IMAGES OF PEOPLE FOCUSSED
ON THEIR BEADWORK COSTUME. CIRCA 1895. ALBUM SIZE 22.5
BY 29.5. IMAGE SIZE C. 15x10 cm.

BEADWORK FROM SOUTHERN AFRICA



1. AN APRON/WAISTBAND, THE LARGE CENTRAL FRONT PANEL
WITH BEADED AND BRASS BUTTON DECORATION AND
TWO LONG SIDE ELEMENTS ATTACHED. SIZE 97 BY 45 CM.
2. A XHOSA BEADED BAG, WITH BEADED STRAP. BAG SIZE 25 BY 19 CM.
3. A BEADED BELT WITH LEATHER BACKING, WITH ORNATE
EUROPEAN BUCKLE AT EITHER END. Length 71 cm.
4. A BEADED FIVE CORE WAISTBAND WITH A RECTANGULAR
PANEL TO ONE END. Length 84 cm.
5. A BELT WITH CLOTH BACKING WITH RED AND BLUE ELEMENTS
ENCIRCLING A CENTRAL WHITE STRIP. Length 77.5 cm.
6. A BELT WITH LEATHER BACKING, FIVE BRASS BUTTONS AT
EITHER END. Length 85 cm.
7. A BELT WITH LEATHER BACK, TWO ROWS OF BRASS BUTTONS AT
EITHER END. Length 63 cm.
8. A (?) NORTHERN NGUNI, NATAL CHIEFDOM BEADED NECKLACE WITH
A LONG CENTRAL SUSPENDED PANEL. Length 63.5 cm.
9. } A PAIR OF BEADED ARMLETS, EACH WITH SEVEN CORES AND
10. } BRASS BUTTONS. SIZE 7 BY 23 CM.
11. A RAFFIA HAT WITH ELABORATE BEADED EMBELLISHMENTS.
DIAMETER. 12.5 CM. (I HAVE AN 1890'S PHOTOGRAPH OF ONE BEING WORN)
12. A NECKLACE, THE FRONT WITH THICK SECTION OF SUSPENDED
BEADS. Length 57 cm. (open).
13. A CHILD'S BEADED NECKLACE, LABELLED "MRS COATES".
Length 34 cm. (open).
14. A SEVEN CORE BELT, A SMALL APRON ATTACHED AND WITH
A FRINGE OF LARGE RED BEADS. Length. 90 cm. Diameter 30 cm.
15. A NECKLACE OF RED BEADS AND MATCH-LIKE WOOD
ELEMENTS, LABELLED "MRS COATES". Length 41 cm.
16. A LONG NECKLACE MADE UP WITH A SINGLE STRAND OF
RED, BLUE AND CLEAR GLASS BEADS. Length 178 cm.

JOHANNESBURG ART GALLERY

PROVENANCE

ARTIST:

ACCESSION NUMBER:

1 Mr Michael Graham - Stewart, 173 Bond Street
Wardon W14 9PB

2

3

4

5

6

7

8

9

10

11

12

JOHANNESBURG ART GALLERY

EXHIBITIONS
REGISTER

ARTIST:

ACCESSION NUMBER:

DATE	LOCATION
1	
2	
3	
4	
5	
6	
7	
8	
9	
10	
11	
12	
13	
14	
15	
16	
17	

ARTIST:
_____ACCESSION NUMBER:

DATE	LOCATION
1	
2	
3	
4	
5	
6	
7	
8	
9	
10	
11	
12	
13	
14	
15	
16	
17	

Greater Johannesburg Transitional Metropolitan Council 96-02-15

TMC : EXECUTIVE COMMITTEE 96-01-31
ART GALLERY COMMITTEE 95-08-25 95-10-06JOHANNESBURG ADMINISTRATION
(CULTURE AND RECREATION)
(Libraries and Museums)

Agnels

13 DONATION OF WORKS OF ART

The Art Gallery Committee has recommended that the following works of art, donated by the Anglo American Johannesburg Centenary Trust, be accepted into the Gallery's collection:

Artist/Community	Title/Object	Medium
Mbatha, Azaria	Passion Jesus	linocut
	The ark	linocut
	Vision for a new world	linocut
	The stranger (Greeting a stranger)	linocut
Melliars, Pamela	Self-portrait as a Mannequin	ceramic, paint, hair, stone
Northern Nguni	necklace	beads and fibre
	belt	beads, fabric and fibre
Southern Nguni	tobacco bag	beads and fabric
Unknown (southern Africa)	apron/waistband	beads and mixed media
	gourd rattle	gourd, beads and fibre
	skirt	fabric and beads
	2 x snuff containers snuff container	gourd, beads and fibre seeds, horn, fibre and beads

Azaria Mbatha (b 1941, Mabeka, Kwa-Zulu/Natal) studied at the Evangelical Lutheran Church Art and Craft Centre at Rorke's Drift from 1962 to 1964. He won a scholarship and studied at the Konst Fack Art School, Sweden, from 1965 to 1967. Mbatha taught at Rorke's Drift in 1967 and 1968 and returned to Sweden in 1970 where he has lived since. He studied at the University of Lund, Sweden, from 1977 to 1980. Mbatha is represented in major public collections in South Africa and internationally, including the Museum of Modern Art, New York, United States of America. "Passion Jesus", 1962 is one of Mbatha's earliest linocuts and was made at Mapumulo before the Art and Craft Centre moved to Rorke's Drift. "The ark", 1993, combines references to an earlier version of the same subject with contemporary concerns. "Vision for a new world" incorporates a self-portrait. In 1993, Mbatha was chosen by the Department of Development Education in Germany and Switzerland to create the 1994 "Misereor Lenten Veil". Mbatha's work interpreting the theme, "The stranger (Greeting a stranger)", contains six biblical narratives. These explore ideas of refugees, strangers, hospitality and displacement in a contemporary political as well as historical context.

Greater Johannesburg Transitional Metropolitan Council 96-02-15

TMC : EXECUTIVE COMMITTEE 96-01-31
ART GALLERY COMMITTEE 95-08-25 95-10-06JOHANNESBURG ADMINISTRATION
(CULTURE AND RECREATION)
(Libraries and Museums)

Pamela Melliars (b 1961, Harare, Zimbabwe) obtained a BAFA from the University of the Witwatersrand in 1983 and a MA in History of Art and Art Theory from the University of Essex, England, in 1986/87. In 1984/85 she was awarded a six-month residency at Cité International des Arts in Paris. She was also awarded a British Council Scholarship and spent one year at Goldsmiths' College in London. In 1990, Melliars co-ordinated a project called Shoplift for Lewisham Arts Festival. Melliars is represented in the collection of the University of the Witwatersrand and the University of South Africa. In 1992, she received an invitation to hold a solo exhibition at Cartwright Hall, Bradford, England, in 1995. In 1988, Melliars began developing her technique of modelling "realistic" large scale ceramic figures. Her sculptures explore the gulf between the ideal body image promoted in the media and what people actually look like. "Self-portrait as a Mannequin", 1992, is a powerful investigation of ambivalent attitudes concerning sexuality, ugliness, submission and control.

The southern African works of art represent a selection of the finest pieces from a larger collection. All the objects are rare examples of southern African beadwork and are not usually offered for sale. They are pieces collected in England, probably having been taken out of South Africa in the late 19th and early 20th century. These pieces are important to the Johannesburg Art Gallery in that its holdings of beadwork consist largely of contemporary pieces. These older examples provide a valuable addition to the collection and their repatriation back to South Africa is in line with the Gallery's policy of building areas of the collection previously neglected.

IT IS RECOMMENDED

That the donations detailed in the item be accepted into the Gallery's permanent collection and that the thanks of the Greater Johannesburg Transitional Metropolitan Council be conveyed to the Anglo American Johannesburg Centenary Trust.

(160/3/1)
(CR:D(LM) 2/96)
(TEC 214/96)
(JOHANNESBURG ADMINISTRATION)
(Mrs R Keene)
(Ext 6857)

EXCO\04157 (EXCO\04015)
bl/tk/eb/tk/ng

M C MATJILA
CHAIRPERSON

16, 23 and 31 January 1996