

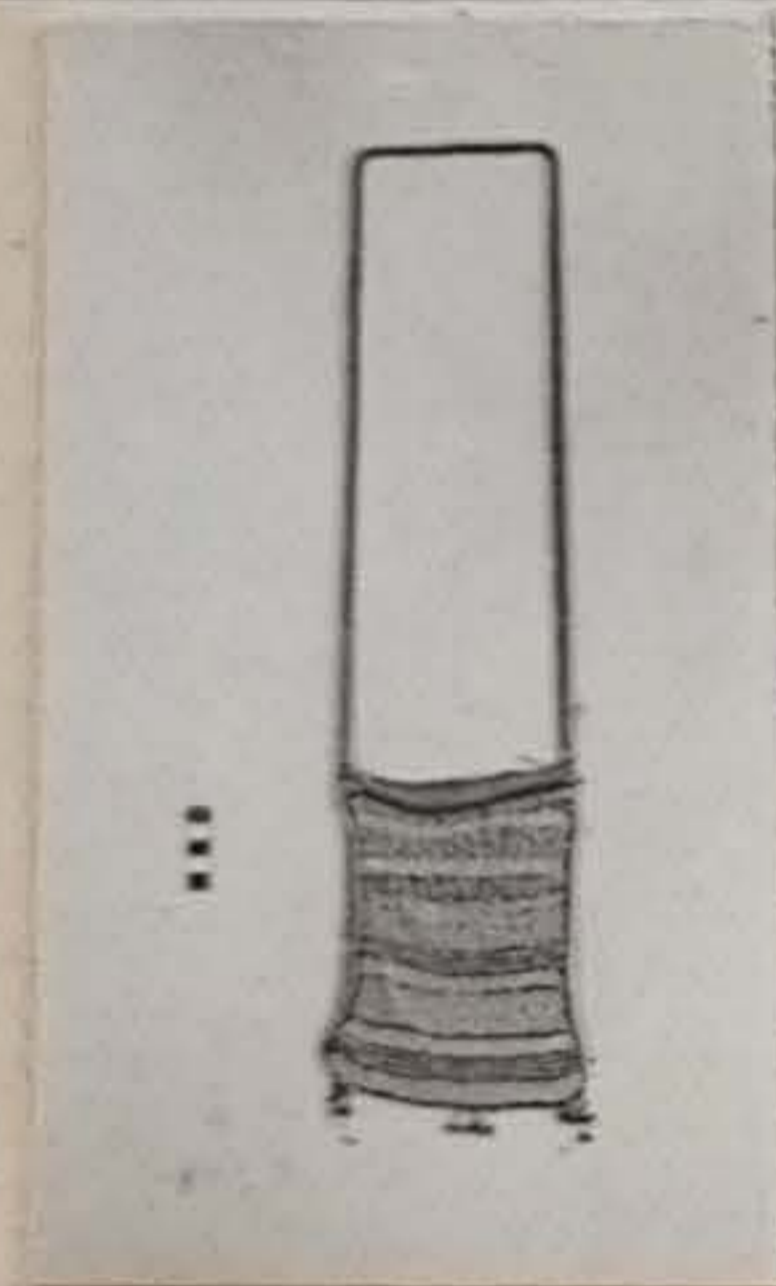
S.A.M. 4946.

HLUBI^G 12

"Basutoland border"^A

C.P.

BAG



Made of sack-cloth, the front beaded in open diamond style. At the sides white 3mm diam beads; irregular, coloured bands of 1½mm diam beads, black, pink, green pink, black, blue, black, pink, blue, pink, black, pink. At the bottom three tassels of the same colours ending in melon seeds.

A long thin, attached at the top corners - beaded in bands of pale green and black-and-white.

L. bag 20,1 cm

W. " 16,9 cm

PRESENTED BY

W. BLENKINS

1925-